



North Florida Community College

Annual FACT Book

~ 2007-2008 ~

Celebrating 50 years

1958 - 2008

Forward



Our mission is to provide innovative solutions and quality support services to help members of our College community effectively achieve their goals. The 2007-2008 NFCC Fact Book provides information about North Florida Community College and includes student, financial, and personnel data. We have made every effort to ensure timely and accurate information.

We hope you will use this publication on a continual basis. We welcome feedback and suggestions, and our measure of success is the degree to which people find this publication informative and useful.

Our sincere thanks are extended to the many people throughout the College who have offered their time and assistance toward this effort.

The Office of Institutional Effectiveness, Research, Planning & Technology



Methods of communication have come a long way since the 1960's.

NFCC now has a state-of-the-art VoIP (voice over Internet protocol) phone system.



Table of Contents

Enrollment

- Student Data 3
- By Degree 4
- By County 6
- By Gender 10
- By Age 11
- By Race 12
- By Time of Day 15

Student Success

- Degrees Awarded 16
- Student Transfer Data 17
- Grade Distribution 18

Distance Learning

- Total Courses and Students 19
- Student Demographics 20

Dual Enrollment

- Student Information 21

Financial Aid

- Total Distribution 23
- Awards by County 24

Other Information

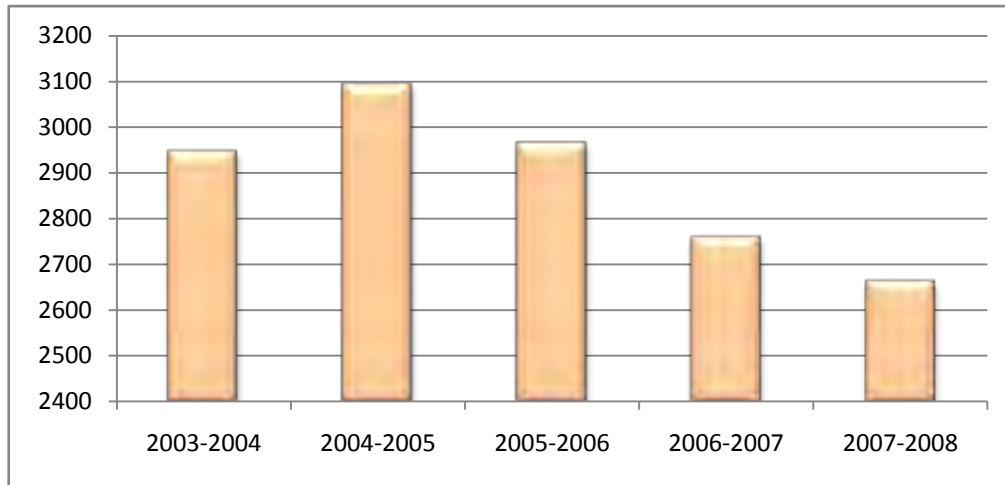
- NFCC Library 26
- NFCC Foundation 27
- Personnel 29
- Finances 30
- Census Data for Service Counties 32
- Glossary of Terms 35

Enrollment



Total Students Enrolled by Headcount (2003-2008)

2003-2004	2004-2005	2005-2006	2006-2007	2007-2008
2947	3093	2966	2759	2663



Total Students Enrolled by FTE* (2003-2008)

	2003-2004	2004-2005	2005-2006	2006-2007	2007-2008
Credit	554	799	748	677	754
Non-Credit	241	220	257	293	218
Total	795	1019	1005	970	972

* FTE (full-time equivalent) is computed by dividing the total the number of credit or clock hours by 30.

Students receive individual attention with an average class size of 21 students.

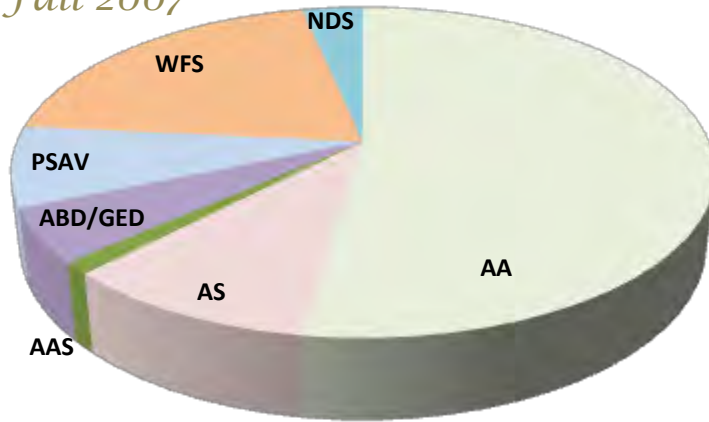


Enrollment



By Degree or Program (2007-2008)

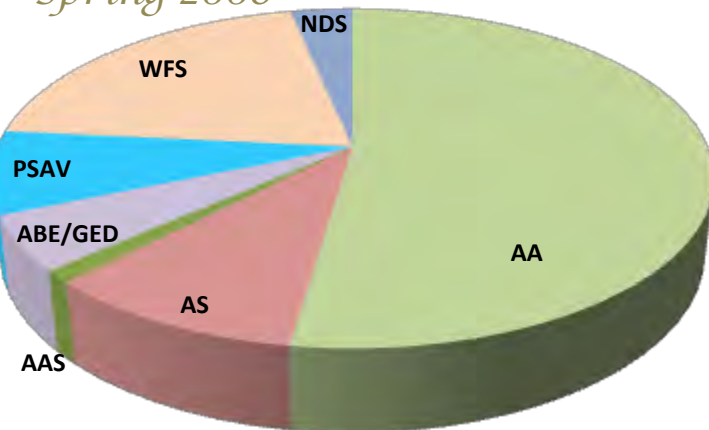
Fall 2007



Degree:

AA	941	52%
AS	179	10%
AAS	21	1%
ABE/GED	94	5%
PSAV	142	8%
WFS	362	20%
NDS	60	3%
Total	1799	

Spring 2008



Degree:

AA	822	50%
AS	168	10%
AAS	17	1%
ABE/GED	112	7%
PSAV	106	6%
WFS	347	21%
NDS	71	4%
Total	1643	

Legend of degree or program:

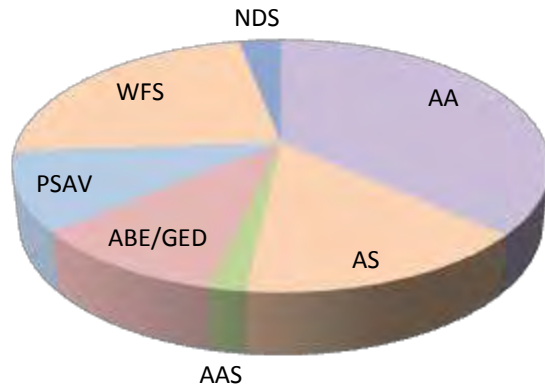
- AA: Associate in Arts
- AS: Associate in Science
- AAS: Associate in Applied Science
- ABE/GED: Adult Basic Education / General Education Diploma
- PSAV: Post-Secondary Adult Vocational Certificate
- WFS: Workforce / Supplemental
- NDS: Non-Degree Seeking (including dual-enrolled)

Enrollment



By Degree or Program (2007-2008)

Summer 2008



AA	302	37%
AS	124	15%
AAS	16	2%
ABE/GED	83	10%
PSAV	84	10%
WFS	190	23%
NDS	25	3%
Total	824	



Practical Nursing Students

1960's and 2008 ...

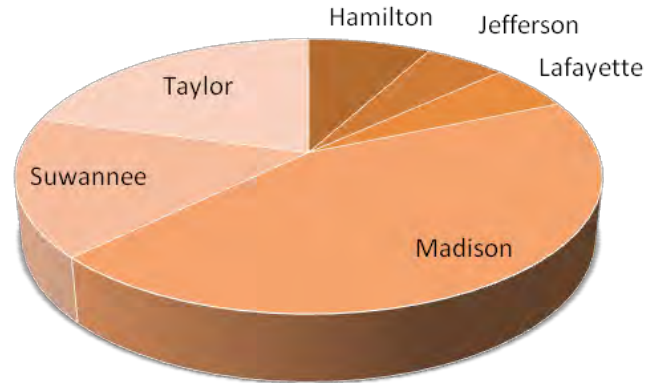
Enrollment



By County (2007-2008)

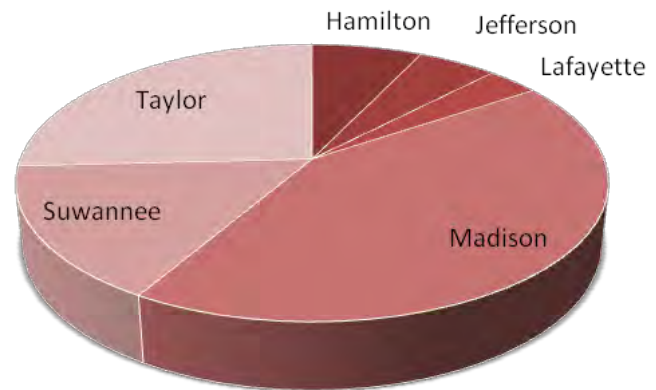
Fall 2007

Hamilton:	125	7%
Jefferson:	83	5%
Lafayette:	85	5%
Madison:	694	39%
Suwannee:	257	14%
Taylor:	328	18%
Other FL:	129	7%
Out of state:	54	3%
Total:	1799	



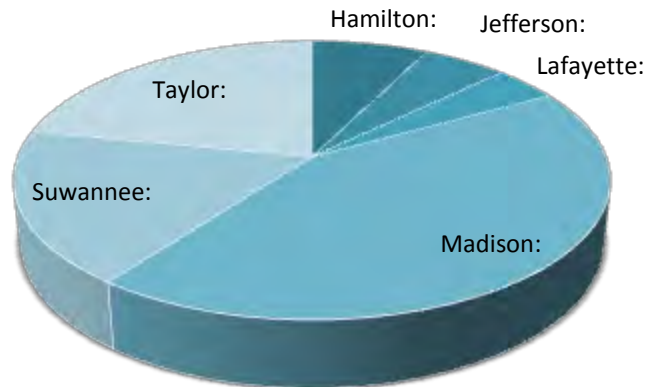
Spring 2008

Hamilton:	110	7%
Jefferson:	79	5%
Lafayette:	52	3%
Madison:	664	40%
Suwannee:	244	15%
Taylor:	400	24%
Other FL:	178	11%
Out of state:	50	3%
Total:	1643	



Summer 2008

Hamilton:	54	7%
Jefferson:	39	5%
Lafayette:	30	3%
Madison:	316	41%
Suwannee:	130	17%
Taylor:	160	16%
Other FL:	69	9%
Out of state:	13	2%
Total:	694	



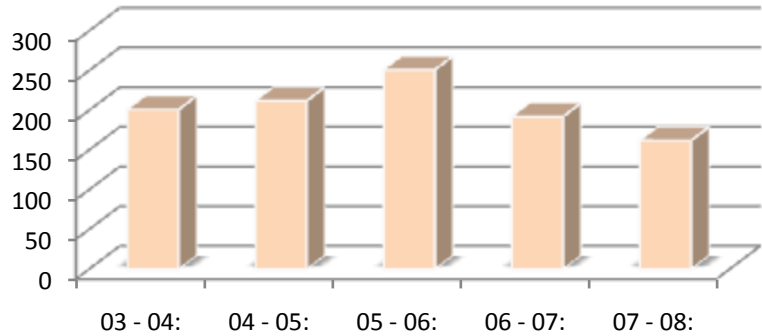
Enrollment



By County (2003-2008)

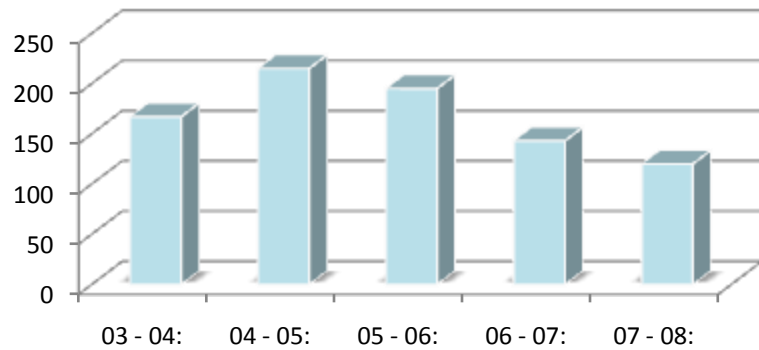
Hamilton

Year	# of students
03 - 04:	201
04 - 05:	212
05 - 06:	251
06 - 07:	192
07 - 08:	162



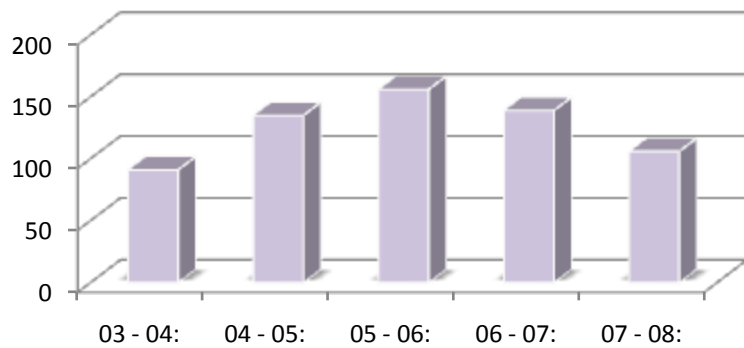
Jefferson

Year	# of students
03 - 04:	167
04 - 05:	215
05 - 06:	195
06 - 07:	143
07 - 08:	120



Lafayette

Year	# of students
03 - 04:	91
04 - 05:	135
05 - 06:	156
06 - 07:	139
07 - 08:	106



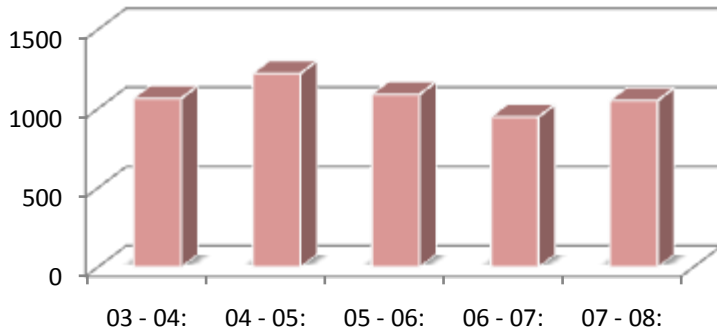
Enrollment



By County (2003-2008)

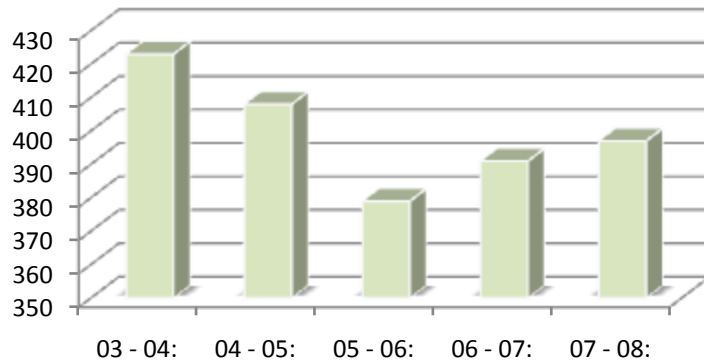
Madison

Year	# of students
03 - 04:	1750
04 - 05:	1978
05 - 06:	1662
06 - 07:	1555
07 - 08:	1640



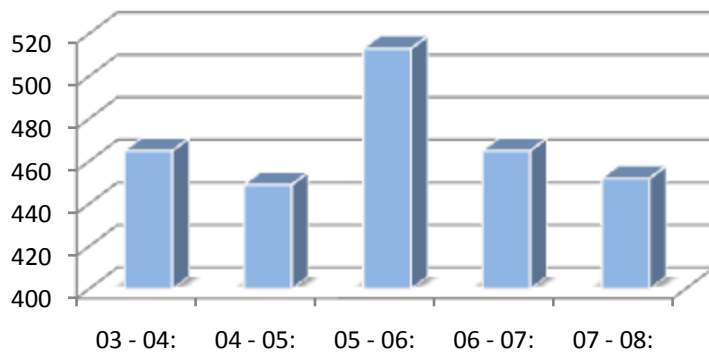
Suwannee

Year	# of students
03 - 04:	423
04 - 05:	408
05 - 06:	379
06 - 07:	391
07 - 08:	397



Taylor

Year	# of students
03 - 04:	465
04 - 05:	449
05 - 06:	513
06 - 07:	465
07 - 08:	452



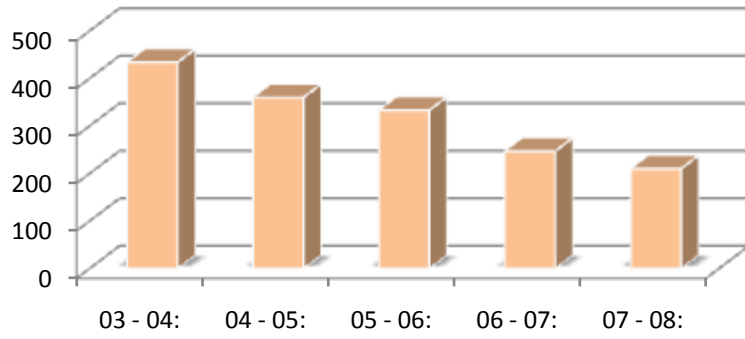
Enrollment



By County (2003-2008)

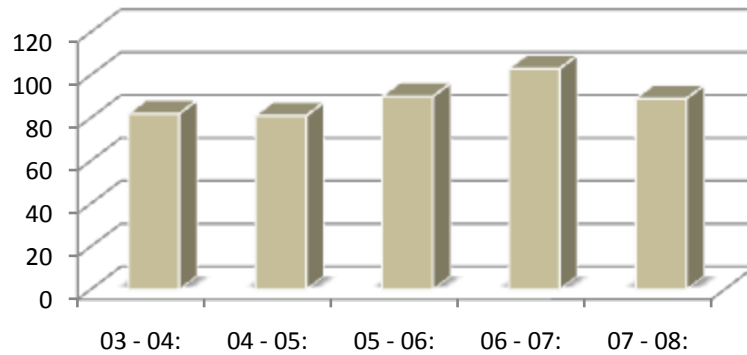
Other Florida

Year	# of students
03 - 04:	434
04 - 05:	360
05 - 06:	333
06 - 07:	247
07 - 08:	210



Out of State

Year	# of students
03 - 04:	82
04 - 05:	81
05 - 06:	90
06 - 07:	103
07 - 08:	89



Proudly serving our six county area and beyond for 50 years



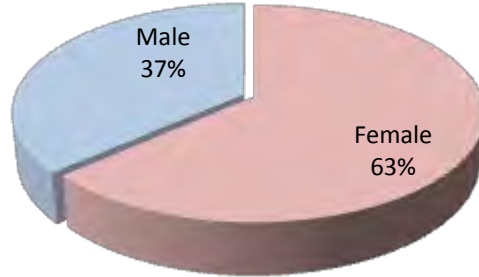
Enrollment



By Gender (2007-2008)

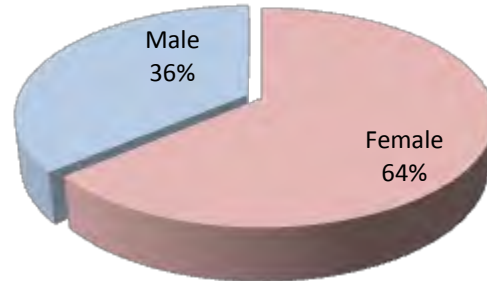
Fall 2007

Female	Male	Not Reported
1135	655	9
63%	36%	1%



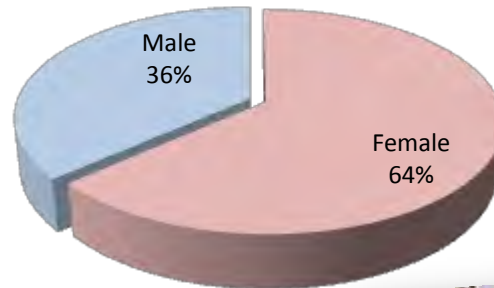
Spring 2008

Female	Male	Not Reported
1037	590	16
63%	36%	1%



Summer 2008

Female	Male	Not Reported
435	250	9
63%	36%	1%



NFCC students have enjoyed a long tradition of spending time together and hanging out with friends on campus.

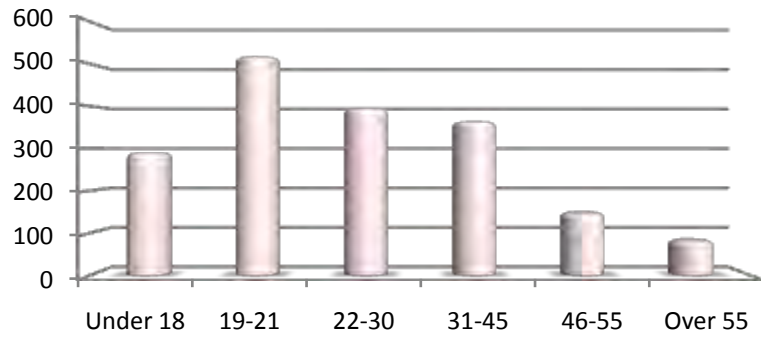
Enrollment



By Age (2007-2008)

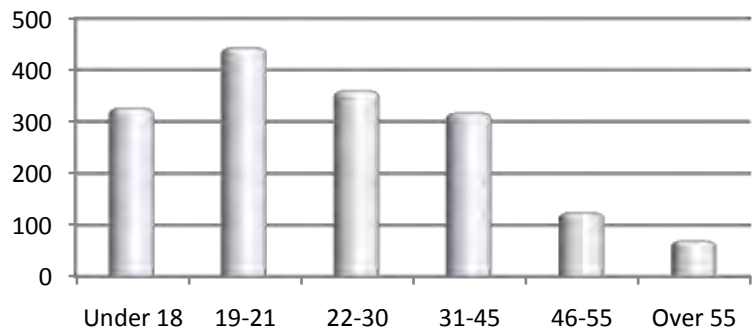
Fall 2007

Age:	
Under 18	290
19 - 21	519
22 - 30	395
31 - 45	364
46 - 55	147
Over 55	81



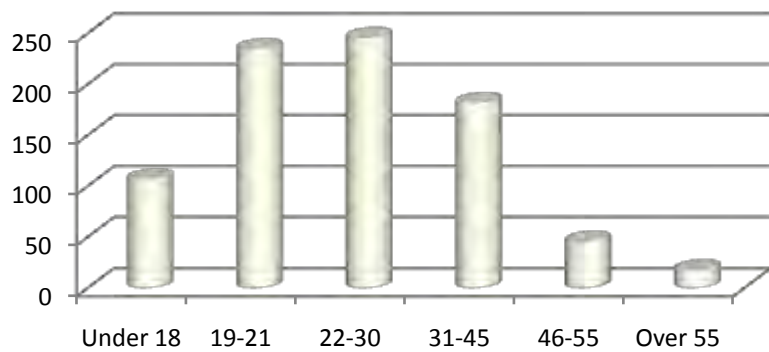
Spring 2008

Age:	
Under 18	326
19 - 21	443
22 - 30	360
31 - 45	317
46 - 55	124
Over 55	69



Summer 2008

Age:	
Under 18	106
19 - 21	234
22 - 30	245
31 - 45	181
46 - 55	45
Over 55	17



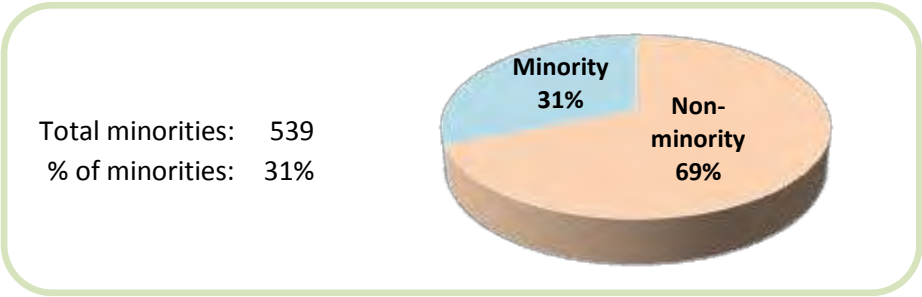
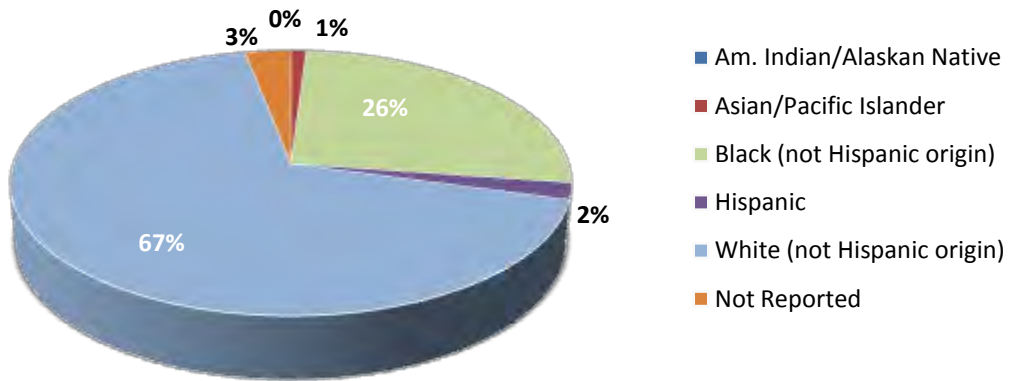
Enrollment



Fall 2007

By Race (2007-2008)

	#	%
Am. Indian/Alaskan Native:	5	0%
Asian/Pacific Islander:	20	1%
Black (not Hispanic origin):	474	26%
Hispanic:	40	2%
White (not Hispanic origin):	1209	67%
Non reported:	51	3%
Total:	1799	



The Student Center was a favorite gathering spot for students in the 1970's.

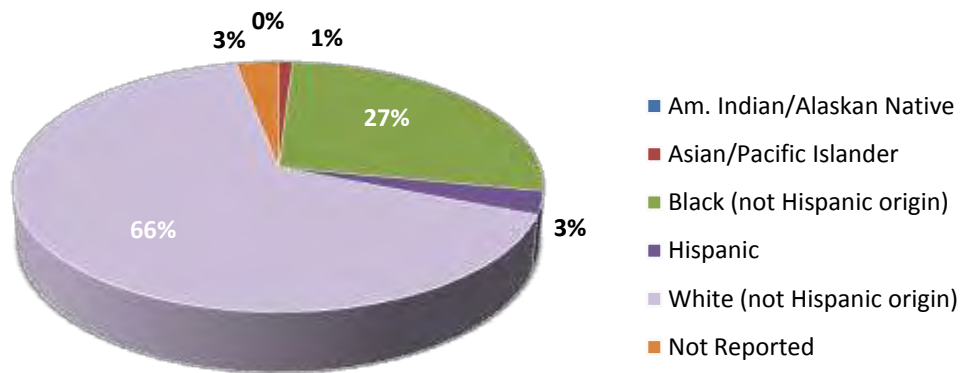
Enrollment



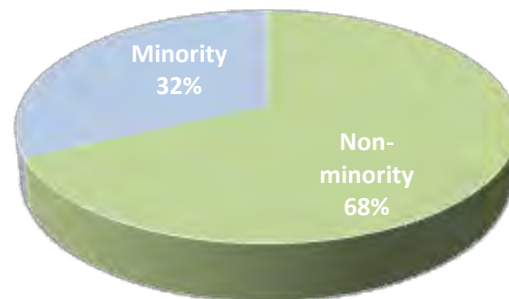
By Race (2007-2008)

Spring 2008

	#	%
Am. Indian/Alaskan Native	5	0%
Asian/Pacific Islander	16	1%
Black (not Hispanic origin)	439	27%
Hispanic	43	3%
White (not Hispanic origin)	1083	66%
Non reported	57	3%
Total:	1643	



Total minorities: 484
 % of minorities: 31%



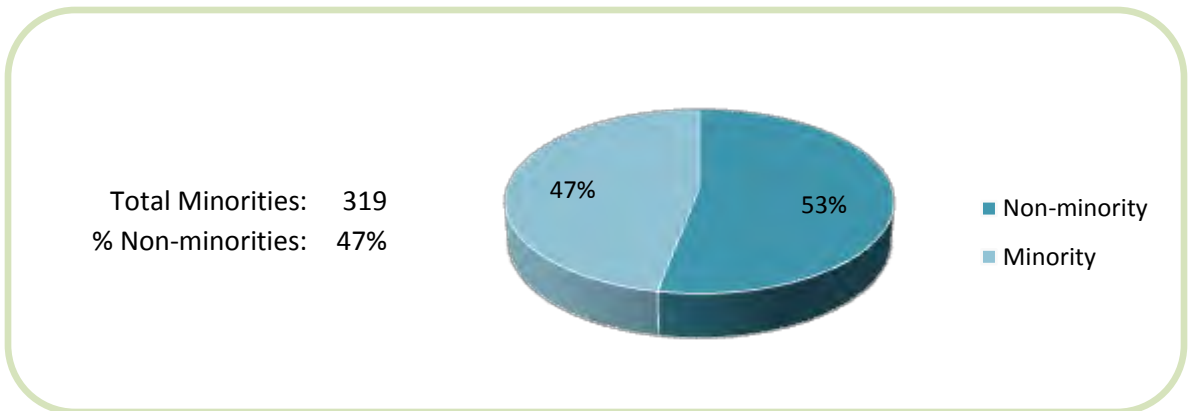
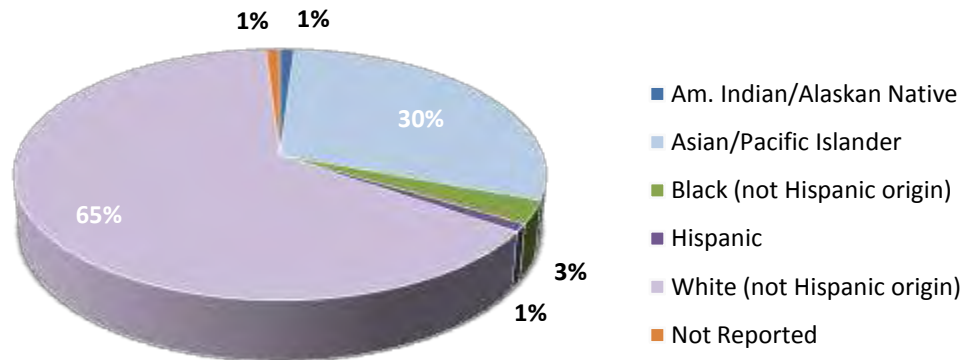
Enrollment



By Race (2007-2008)

Summer 2008

	#	%
Am. Indian/Alaskan Native	4	1%
Asian/Pacific Islander	9	30%
Black (not Hispanic origin)	205	3%
Hispanic	18	1%
White (not Hispanic origin)	450	65%
Non reported	8	1%
Total:	694	



Enrollment



Student Schedule by Time of Day

Fall 2007

Time	Monday	Tuesday	Wednesday	Thursday	Friday	Saturday
8:00-9:15 a.m.	500	368	542	395	120	102
9:30-10:45 a.m.	347	394	369	394	36	0
11:00-12:15 p.m.	382	370	382	366	47	0
12:30-1:45 p.m.	368	273	345	272	2	19
2:00-3:15 p.m.	106	147	81	154	2	0
5:00 p.m. or later	350	411	282	408	11	0



The clock stopped at 4:55 a.m., the exact time when the tornado came through campus, April 19, 1988.



Spring 2008

Time	Monday	Tuesday	Wednesday	Thursday	Friday	Saturday
8:00-9:15 a.m.	446	345	461	368	133	67
9:30-10:45 a.m.	348	331	366	331	37	9
11:00-12:15 p.m.	311	338	327	324	18	16
12:30-1:45 p.m.	261	177	288	173	6	17
2:00-3:15 p.m.	112	176	112	183	10	14
5:00 p.m. or later	208	328	188	275	8	28

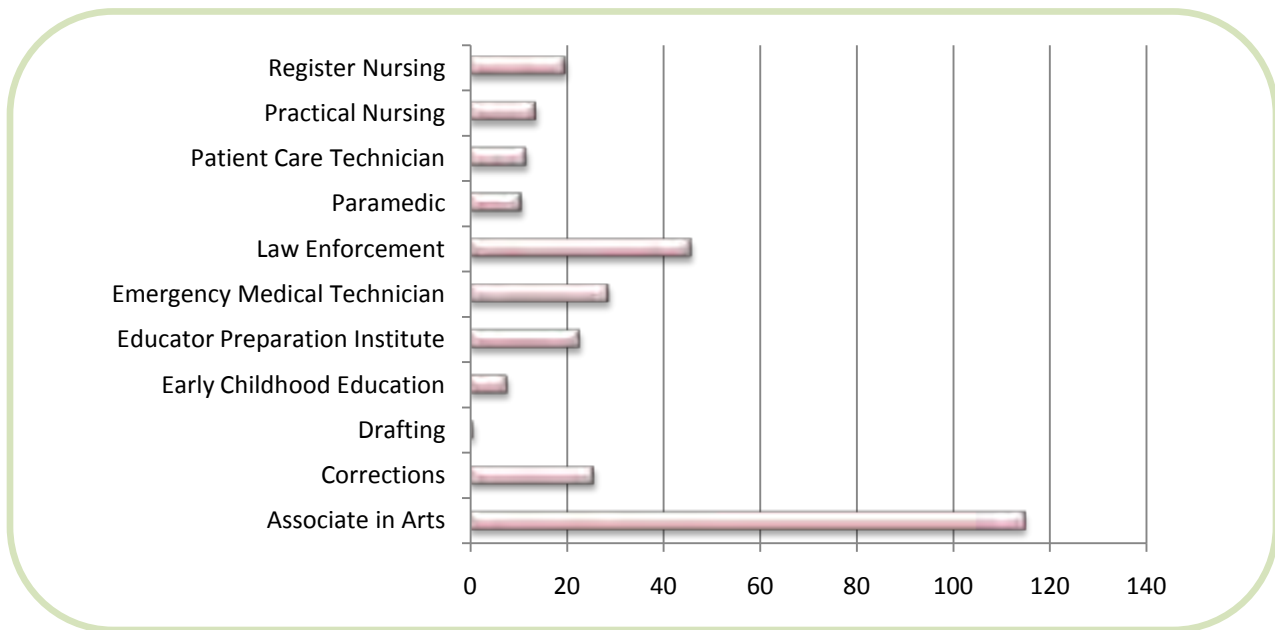
Academic Success



Number of Degrees Awarded (2003-2008)

	03-04	04-05	05-06	06-07	07-08
Associate in Arts	135	157	118	134	115
Associate in Science	4	7	2	0	21
Associate in Applied Science	13	15	5	7	6
Certificate	205	181	140	148	177
TOTAL:	357	360	265	289	319

Graduates by Program (2007-2008)



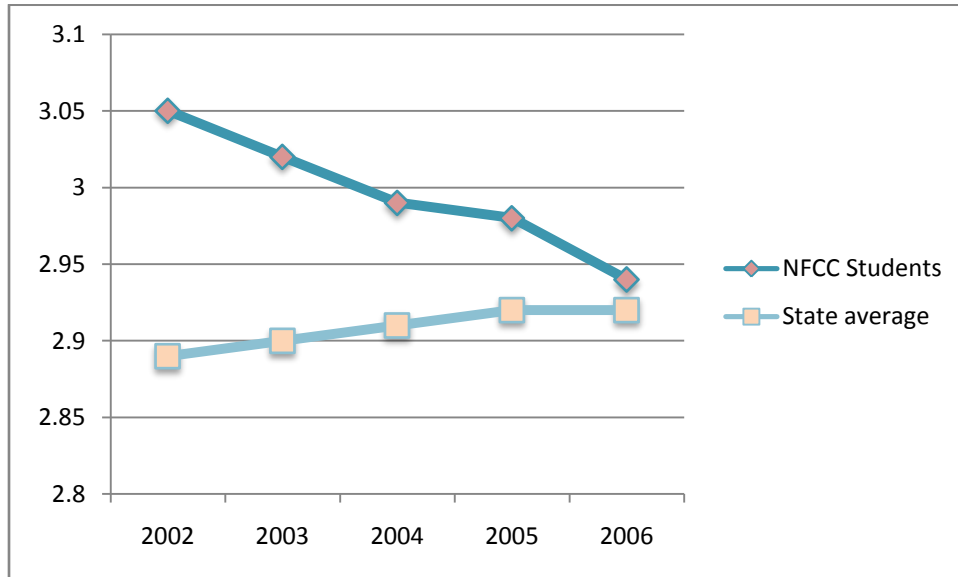
Associate in Arts	115	Law Enforcement	46
Corrections	26	Paramedic	11
Drafting	1	Patient Care Technician	12
Early Childhood Education	8	Practical Nursing	14
Educator Preparation Institute	23	Register Nursing	20
Emergency Medical Technician	29		

Academic Success



NFCC Transfer Success (2002-2006)

Mean cumulative grade-point averages for NFCC graduates who transfer to Florida public universities:



	2002	2003	2004	2005	2006
NFCC Students	3.05	3.02	2.99	2.98	2.94
State average	2.89	2.90	2.91	2.92	2.92

Data retrieved from http://www.fldoe.org/arm/cctcmis/pubs/articulation/artic_main.asp



*NFCC graduation ceremony
1964*

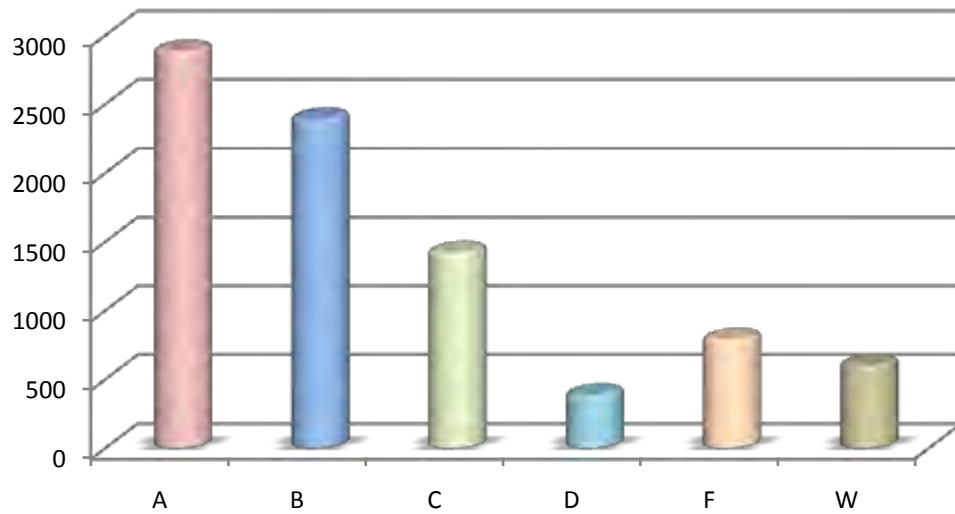


Academic Success



Grade Distribution in NFCC Courses (2007-2008)

A	B	C	D	F	W	Total
2885	2392	1422	386	790	603	8478

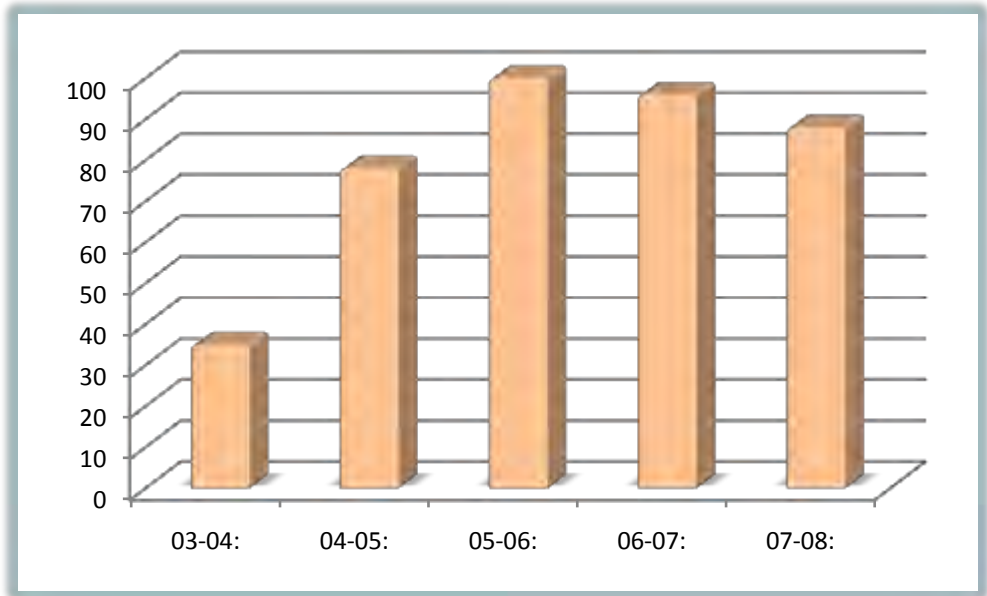


Distance Learning



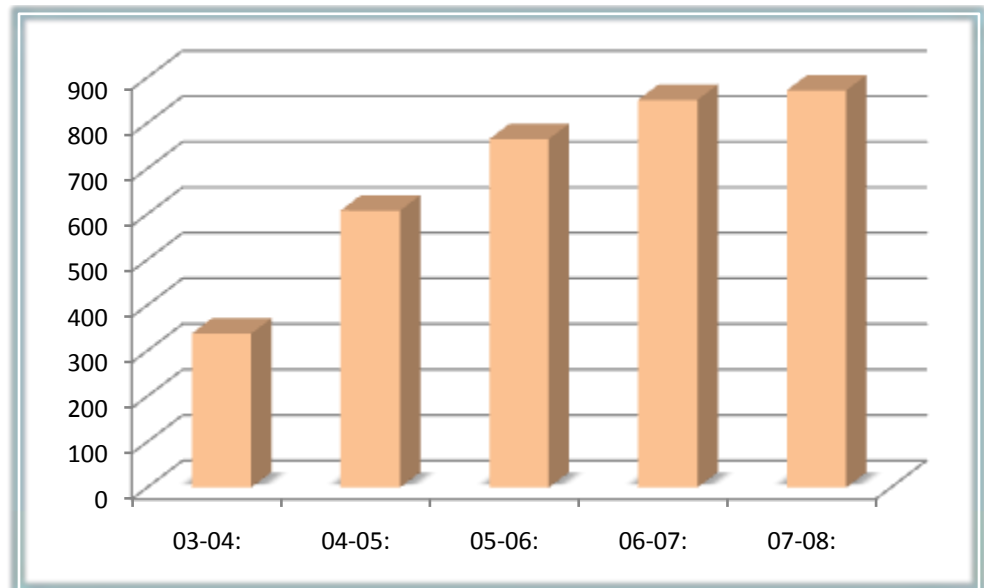
Number of Online Courses (2003-2008):

Year	# of courses
03 - 04:	35
04 - 05:	78
05 - 06:	100
06 - 07:	96
07 - 08:	88



Number of Online Students (2003-2008):

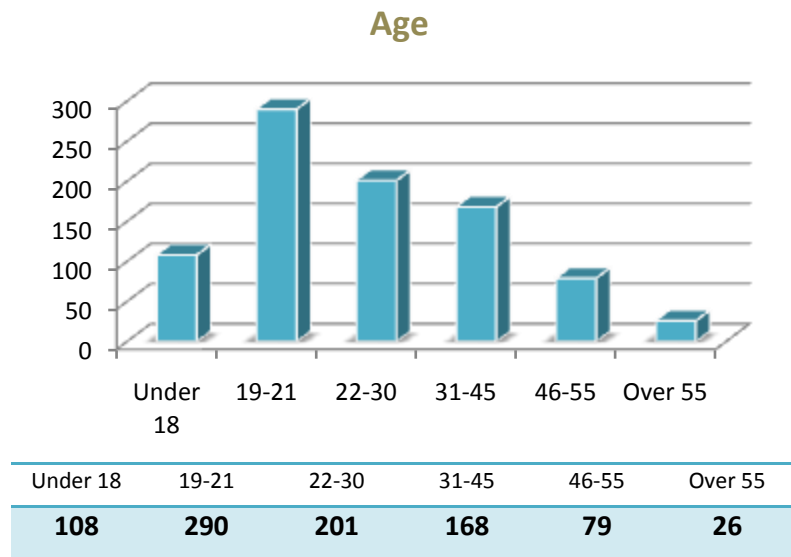
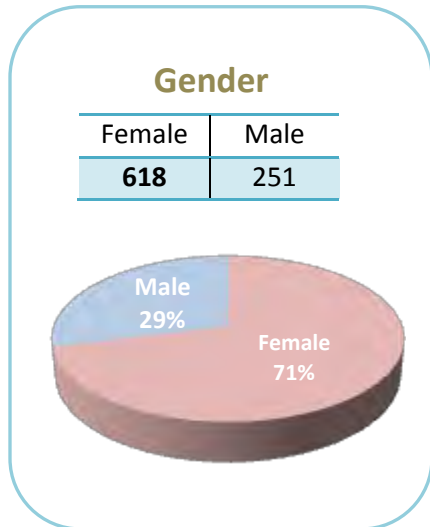
Year	# of students
03 - 04:	338
04 - 05:	608
05 - 06:	765
06 - 07:	851
07 - 08:	872



Distance Learning



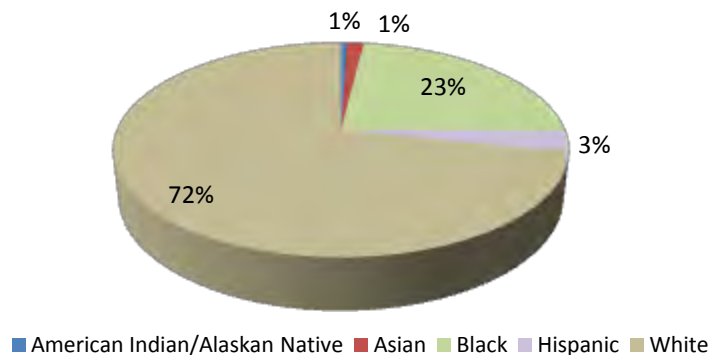
Online Student Demographics (2007-2008)



Average age of NFCC online students: 27

Race:

American Indian/Alaskan Native:	4
Asian:	11
Black:	181
Hispanic:	25
White:	559
Not Reported:	92



Current gas prices have increased the appeal of online courses. Can you imagine filling up this 1970's vehicle at today's gas prices?

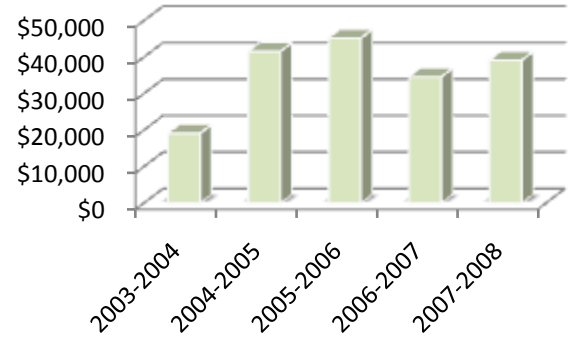


Dual Enrollment

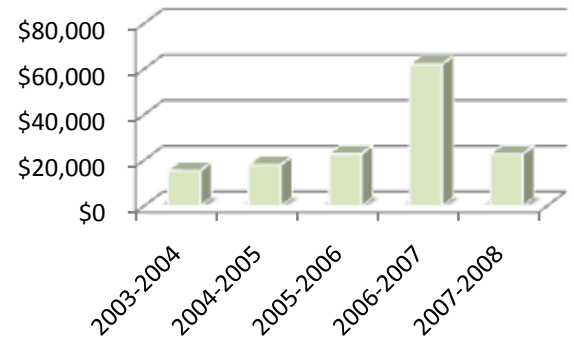


Number and Cost of Dual Enrolled Students (2003-2008)

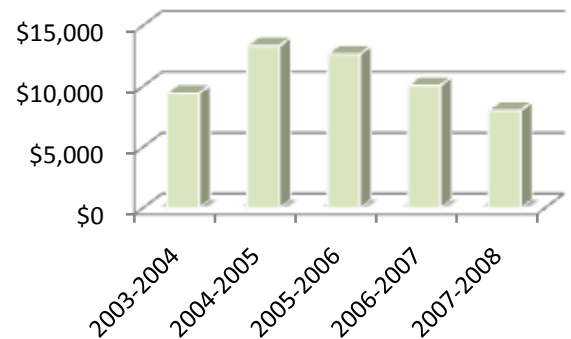
Hamilton					
	No of students	Credit hours	County Value	Total NFCC DE Value	% Total DE Value
2003-2004	29	365	\$19,126	\$156,797	12%
2004-2005	39	717	\$41,586	\$235,064	18%
2005-2006	39	729	\$45,198	\$215,012	21%
2006-2007	30	526	\$34,606	\$241,481	14%
2007-2008	28	595	\$39,151	\$210,296	19%
5-yr. total:	165		\$179,667	\$1,058,650	17%



Jefferson					
	No of students	Credit hours	County Value	Total NFCC DE Value	% Total DE Value
2003-2004	19	297	\$15,563	\$156,797	10%
2004-2005	24	312	\$18,096	\$235,064	8%
2005-2006	32	369	\$22,878	\$215,012	11%
2006-2007	49	944	\$62,115	\$241,481	26%
2007-2008	26	346	\$22,766	\$210,296	11%
5-yr. total:	150		\$141,418	\$1,058,650	13%



Lafayette					
	No of students	Credit hours	County Value	Total NFCC DE Value	% Total DE Value
2003-2004	13	180	\$9,432	\$156,797	6%
2004-2005	18	230	\$13,340	\$235,064	6%
2005-2006	19	204	\$12,648	\$215,012	6%
2006-2007	24	153	\$10,067	\$241,481	4%
2007-2008	13	122	\$8,027	\$210,296	4%
5-yr. total:	87		\$53,514	\$1,058,650	5%

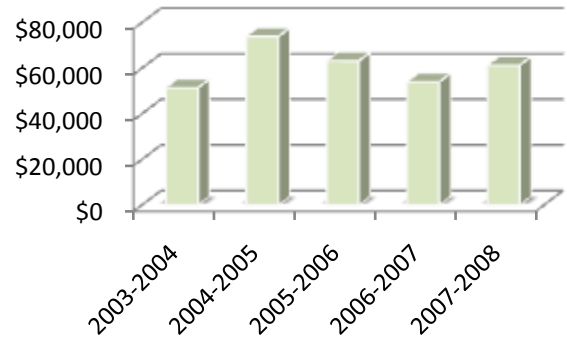


Dual Enrollment

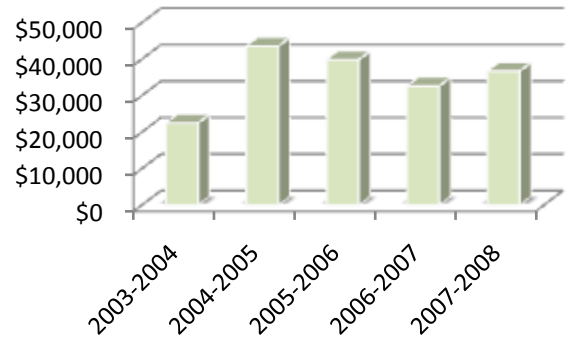


Number and Cost of Dual Enrolled Students (2003-2008)

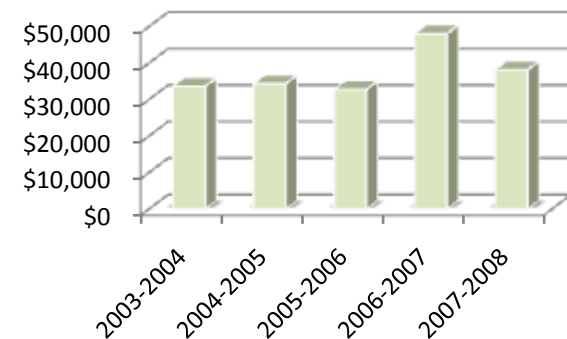
Madison					
	No of students	Credit hours	County Value	Total NFCC DE Value	% Total DE Value
2003-2004	76	982	\$51,448	\$156,797	33%
2004-2005	100	1275	\$73,950	\$235,064	31%
2005-2006	85	1020	\$63,240	\$215,012	29%
2006-2007	80	821	\$54,022	\$241,481	22%
2007-2008	83	932	\$61,325	\$210,296	29%
5-yr. total:	424		\$303,985	\$1,058,650	29%



Suwannee					
	No of students	Credit hours	County Value	Total NFCC DE Value	% Total DE Value
2003-2004	50	429	\$22,480	\$156,797	14%
2004-2005	72	751	\$43,558	\$235,064	19%
2005-2006	63	643	\$39,866	\$215,012	19%
2006-2007	52	496	\$32,637	\$241,481	14%
2007-2008	51	558	\$36,716	\$210,296	17%
5-yr. total:	288		\$175,257	\$1,058,650	17%



Taylor					
	No of students	Credit hours	County Value	Total NFCC DE Value	% Total DE Value
2003-2004	46	642	\$33,641	\$156,797	21%
2004-2005	48	593	\$34,390	\$235,064	15%
2005-2006	52	529	\$32,794	\$215,012	15%
2006-2007	55	730	\$48,034	\$241,481	20%
2007-2008	52	580	\$38,164	\$210,296	18%
5-yr. total:	253		\$187,023	\$1,058,650	18%

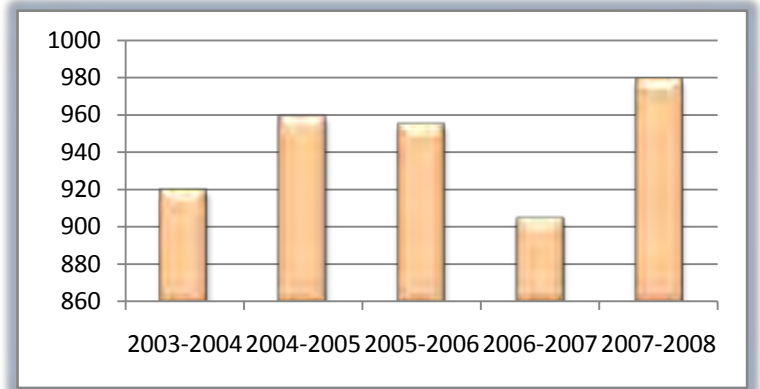


Financial Aid



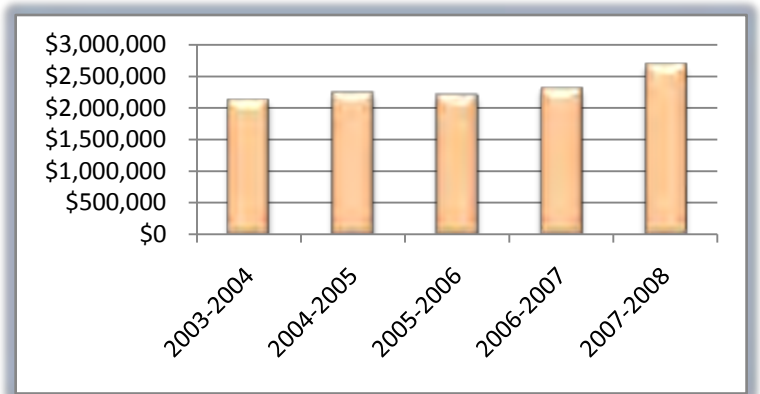
Number of Financial Aid Awards (2003-2008)

2003-2004	920
2004-2005	959
2005-2006	955
2006-2007	905
2007-2008	979



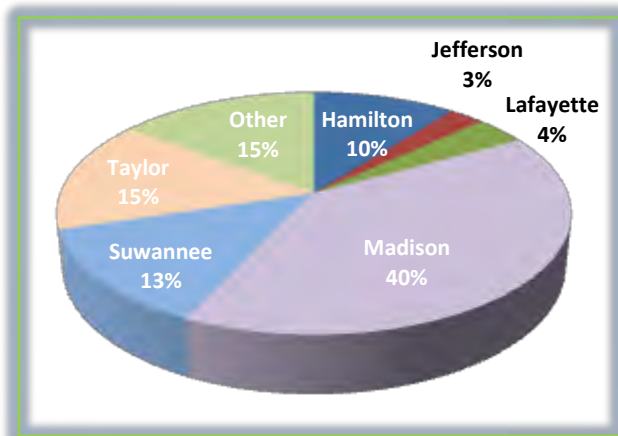
Dollar Amount of Financial Aid Awards (2003-2008)

2003-2004	\$ 2,107,221
2004-2005	\$ 2,218,090
2005-2006	\$ 2,184,731
2006-2007	\$ 2,290,129
2007-2008	\$2,664,624



Distribution by County (2007-2008)

Hamilton	\$ 241,536
Jefferson	\$ 58,354
Lafayette	\$ 86,913
Madison	\$ 919,160
Suwannee	\$ 302,995
Taylor	\$ 341,690
Other	\$ 339,481

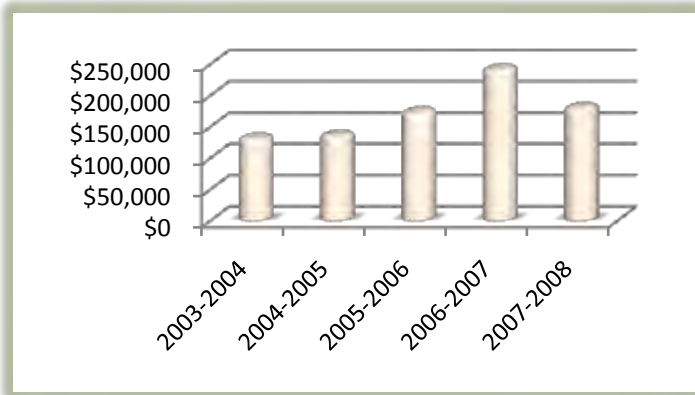


Financial Aid

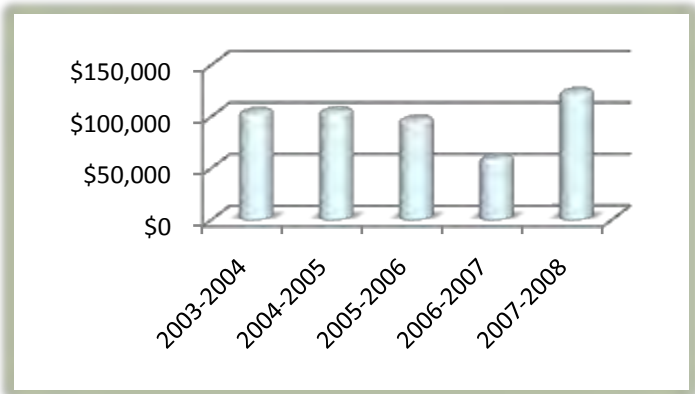


Awards by County (2003-2008)

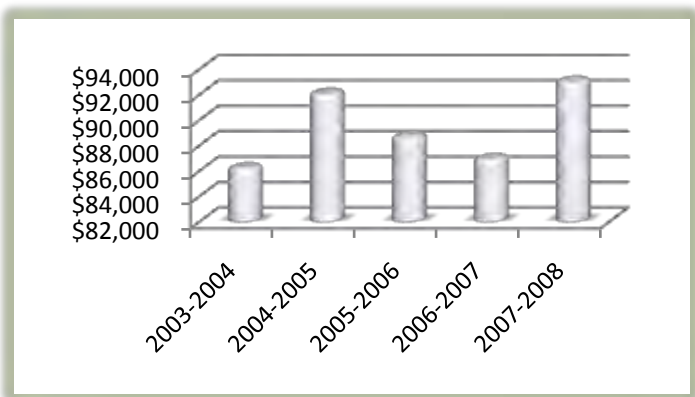
Hamilton	# of Students	Awards Paid
2003-2004	60	\$ 131,129
2004-2005	70	\$ 135,751
2005-2006	75	\$ 173,138
2006-2007	74	\$ 241,536
2007-2008	66	\$179,772
Total:		\$861,326



Jefferson	# of Students	Awards Paid
2003-2004	55	\$ 103,182
2004-2005	60	\$ 103,889
2005-2006	53	\$ 95,896
2006-2007	35	\$ 58,354
2007-2008	49	\$122,667
Total:		\$483,988



Lafayette	# of Students	Awards Paid
2003-2004	37	\$ 86,191
2004-2005	36	\$ 92,053
2005-2006	38	\$ 88,644
2006-2007	41	\$ 86,913
2007-2008	42	\$93,005
Total:		\$446,806

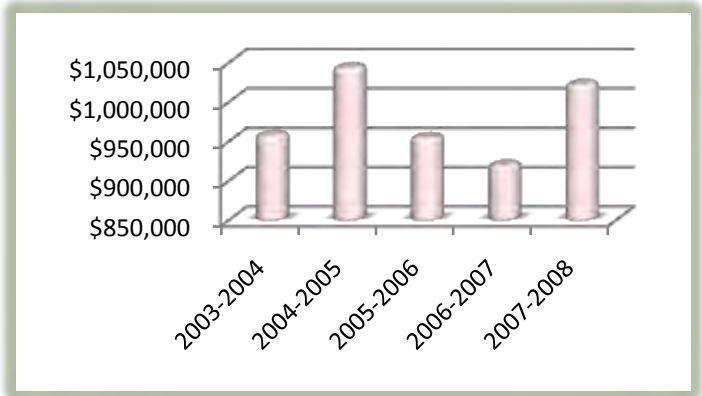


Financial Aid

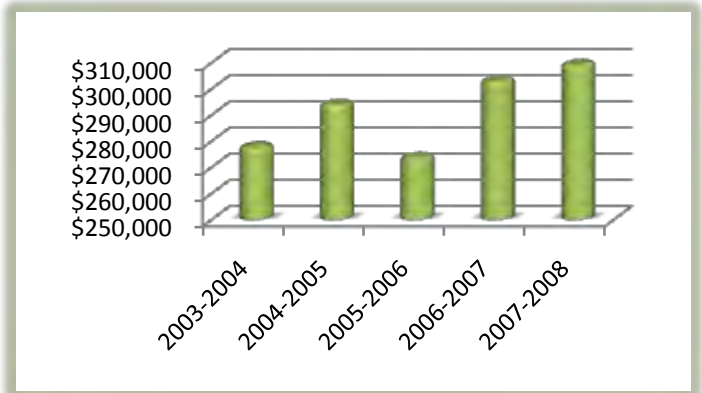


Awards by County (2003-2008)

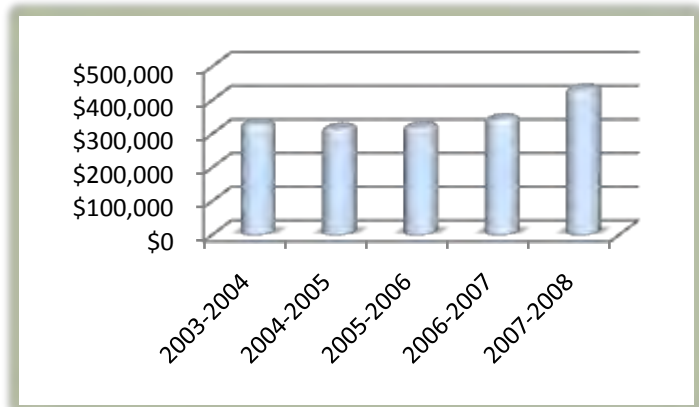
Madison	# of Students	Awards Paid
2003-2004	398	\$ 956,749
2004-2005	415	\$ 1,042,649
2005-2006	412	\$ 953,914
2006-2007	388	\$ 919,160
2007-2008	395	\$ 1,021,526
Total:		\$ 4,893,998



Suwannee	# of Students	Awards Paid
2003-2004	123	\$ 277,766
2004-2005	135	\$ 293,970
2005-2006	133	\$ 273,655
2006-2007	129	\$ 302,995
2007-2008	129	\$ 309,210
Total:		\$ 1,457,596



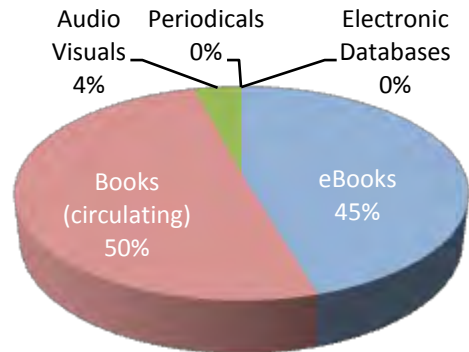
Taylor	# of Students	Awards Paid
2003-2004	142	\$ 325,879
2004-2005	140	\$ 314,078
2005-2006	163	\$ 317,984
2006-2007	156	\$ 341,690
2007-2008	179	\$ 429,934
Total:		\$ 1,756,565





2006-2007 Collections:

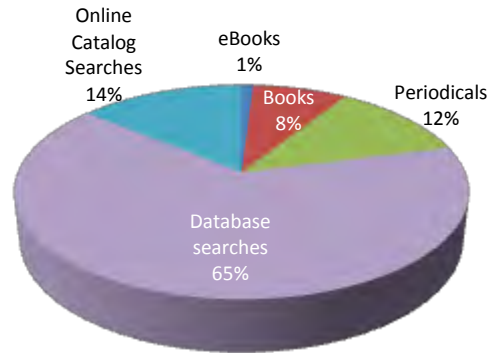
eBooks	30,330
Books (circulating)	33,350
Audio Visuals*	2,743
Periodicals	227
Electronic Databases	93
Total:	66,743



*Audio visuals include audiocassettes, DVDs, CDs, filmstrips, slides, and video tapes.

2006-2007 Circulation Statistics:

eBooks	1,240
Books	6863
Periodicals	10,229
Database searches	54,956
Online Catalog Searches	11,863



Fiscal Acquisitions by Library of Congress Classification

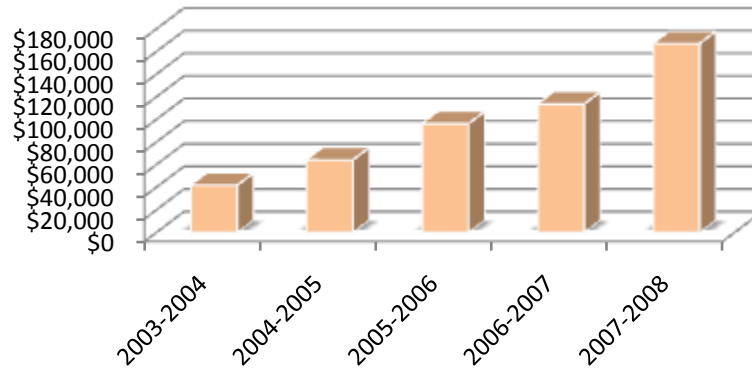
General Works:	4	Music:	62
Philosophy, Psychology Religion:	141	Fine Arts:	99
Auxiliary Sciences of History:	17	Literature:	262
History: General and Old World:	127	Science:	93
History: America:	158	Medicine:	90
Geography, Anthropology, Recreation:	58	Agriculture:	19
Social Sciences:	204	Technology:	90
Political Sciences:	27	Military Science:	12
Law:	14	Naval Science:	3
Education:	62	Bibliographies, Library Science:	14

NFCC Foundation



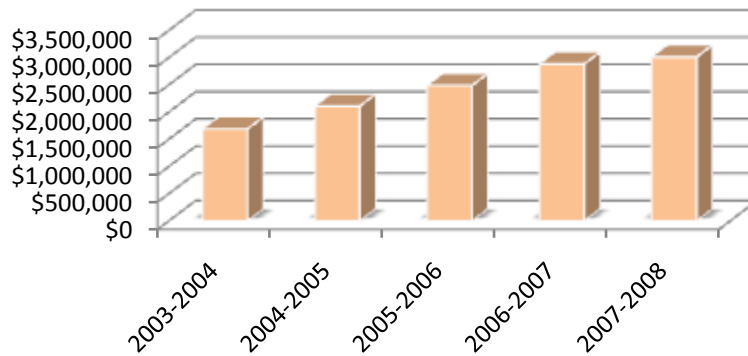
Scholarships Awarded (2003-2008):

2003-2004	2004-2005	2005-2006	2006-2007	2007-2008
\$41,804	\$64,118	\$96,184	\$113,529	\$167,085



Foundation Assets (2003-2008):

2003-2004	2004-2005	2005-2006	2006-2007	2007-2008
\$1,686,443	\$2,106,447	\$2,486,030	\$2,880,106	\$3,008,821



Technology



Campus technology has evolved through the years. Each classroom is now equipped with:

- teaching computer
- internet access
- data projector
- interactive smartboard technology
- DVD player & VCR



R2D2 was added in 2008 to enhance campus technology. Besides performing as a recruiter, he houses a projector, iPod dock, DVD player, and data ports for full technology integration.

Wireless Internet is accessible throughout campus

15 computer labs are fully equipped for student use

Every classroom, as well as every office, has a VoIP (voice over Internet protocol) telephone



NFCC technology inventory:

- 591 instructional computers
- 198 administrative computers
- 21 data and application servers
- 82 switches for network connectivity

Classes were held in NFCC's new state-of-the-art science building in the fall of 2007. All student labs and instructor offices were equipped with Apple computers including desktops and laptops.

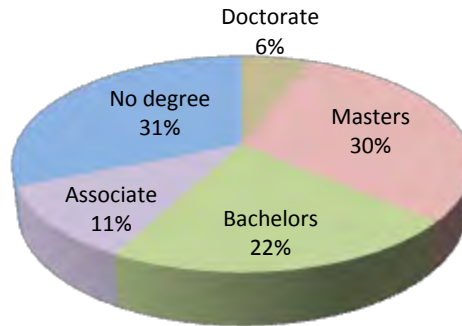


Personnel



Full-Time Employees With Degrees (2007-2008)

Doctorate:	8
Masters:	41
Bachelors:	29
Associate:	15
No degree:	42



58 (42%) of current NFCC employees are graduates of North Florida Community College!

Ethnicity	Percentage
White	84%
Black	10%
Hispanic	4%
Other	2%

	Male	Female
Black	5	8
White	2	81
Hispanic	32	4
Other	2	1

Gender	Percentage
Female	70%
Male	30%

Full-time Employees by Occupational Activity:

Executive	8
Instructional	35
Library/Counselor	2
Professional Support	37
Clerical/Secretarial	36
Technical/Paraprofessional	4
Service/Maintenance	13
Total full-time employees:	135



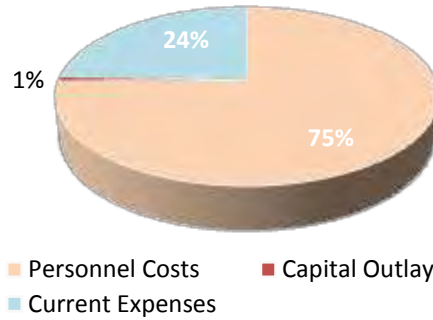
Hair curlers were a staple of women's fashion in the 60's and 70's, and students even wore them to class!

Finances

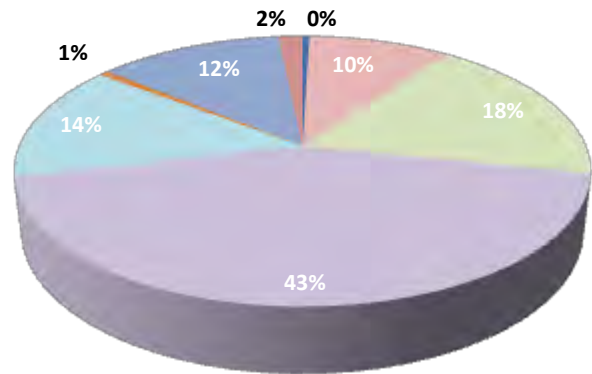


General Fund Budget (2008-2009):

By Object:	
Personnel Costs	\$6,466,469
Capital Outlay	\$61,992
Current Expenses	\$2,224,395
Total:	\$8,752,856



By Organizational Unit:	
Academic Support - SPD	\$70,953
Academic Support - Other	\$768,673
Institutional Support	\$1,534,819
Instruction	\$4,106,007
Plant Operations	\$1,344,547
Public Service	\$45,991
Student Support	\$724,491
Transfer Contingencies	\$157,375
Total:	\$8,752,856



- Academic Support - SPD
- Institutional Support
- Plant Operations
- Student Support
- Academic Support - Other
- Instruction
- Public Service
- Transfer Contingencies




NFCC Sentinels traveled in style in the 1960's

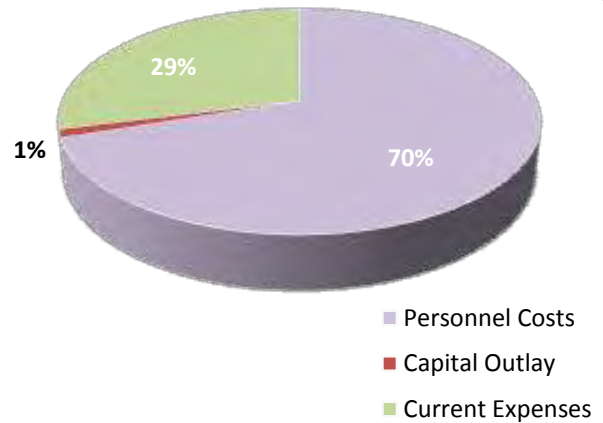

Finances



General Fund Budget Expenditures (2007-2008)

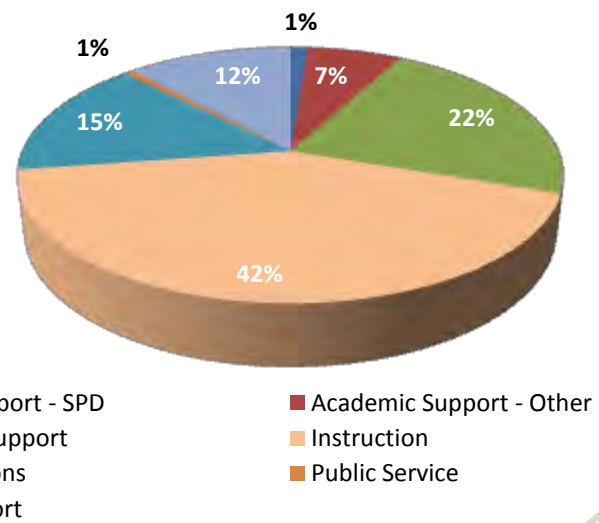
By Object:

Personnel Costs:	\$6,253,548
Capital Outlay:	\$7,978
Current Expenses:	\$2,597,516
Total:	\$8,859,043



By Organizational Unit:

Academic Support - SPD	\$76,475
Academic Support - Other	\$781,674
Institutional Support	\$1,453,181
Instruction	\$3,482,588
Plant Operations	\$1,453,454
Public Service	\$55,582
Student Support	\$1,102,602
Total:	\$8,859,043

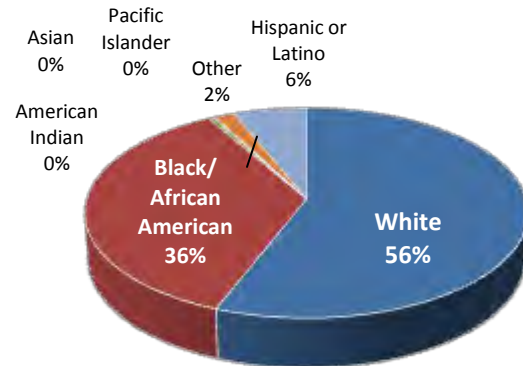
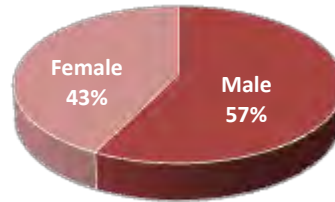


Census Data



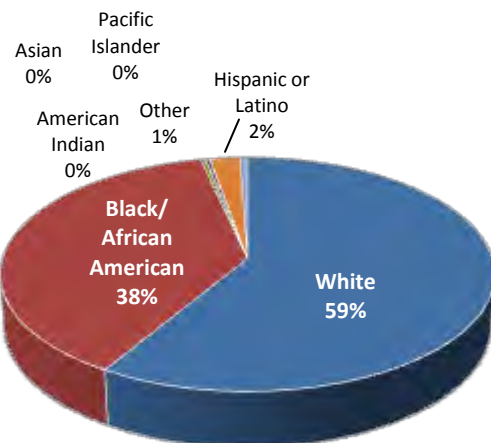
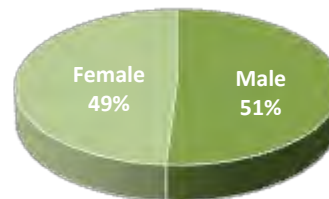
Hamilton County:

2000 Census Population:	13,327
Male:	7657
Female:	5670
White:	7835
Black/African American:	5027
American Indian:	56
Asian:	26
Pacific Islander:	2
Hispanic or Latino:	847
Other:	225
Median Family Income:	\$30,677
Of the Population Over Age 25:	
High School Graduate:	5507
Bachelor Degree or Higher:	636



Jefferson County:

2000 Census Population:	12,902
Male:	6581
Female:	6321
White:	7647
Black/African American:	4947
American Indian:	50
Asian:	39
Pacific Islander:	5
Hispanic or Latino:	290
Other:	73
Median Family Income:	\$40,407
Of the Population Over Age 25:	
High School Graduate:	6520
Bachelor Degree or Higher:	1506



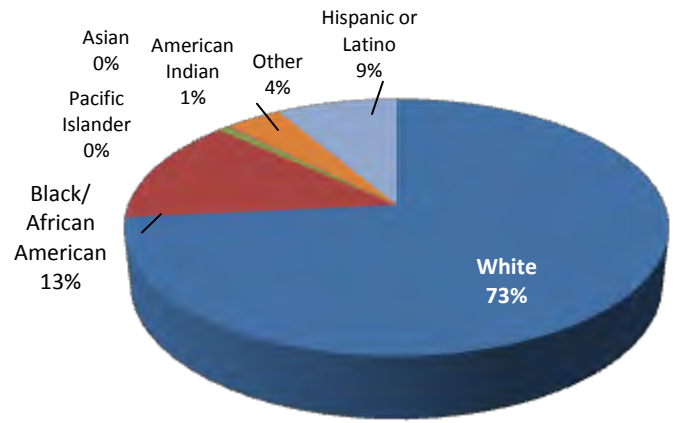
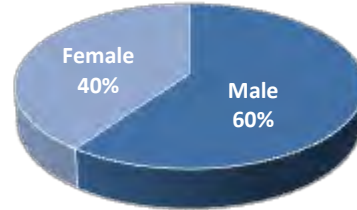
Census data retrieved from <http://factfinder.census.gov>. Data from 2000 is the most current.

Census Data



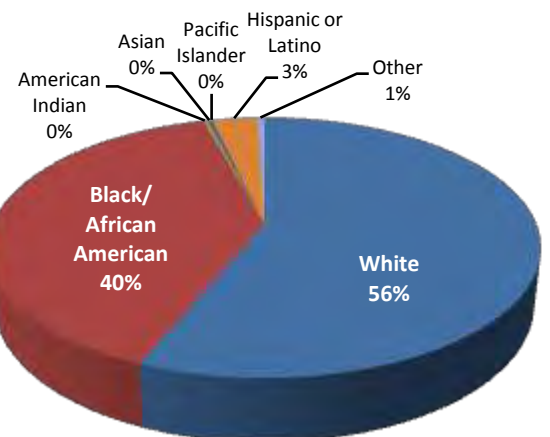
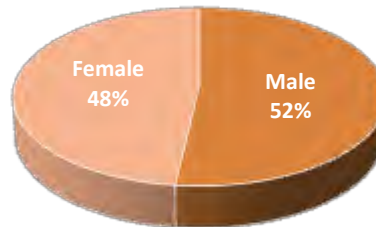
Lafayette County:

2000 Census Population:	7,022
Male:	4200
Female:	2822
White:	5566
African American:	1009
American Indian:	50
Asian:	9
Pacific Islander:	1
Hispanic:	642
Other:	302
Median Family Income:	\$35,202
Of the Population Over Age 25:	
High School Graduate:	3237
Bachelor Degree or higher:	340



Madison County:

2000 Census Population:	18,733
Male:	9710
Female:	9023
White:	10769
Black/African American:	7549
American Indian:	60
Asian:	60
Pacific Islander:	4
Hispanic or Latino:	600
Other:	96
Median Family Income:	\$31,753
Of the Population Over Age 25:	
High School Graduate:	8269
Bachelor Degree or Higher:	1252



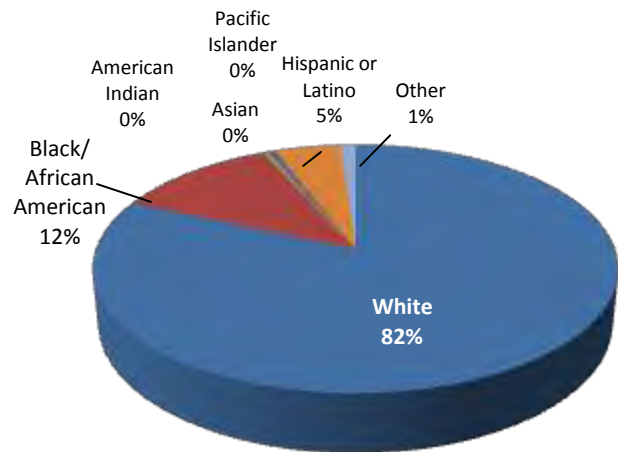
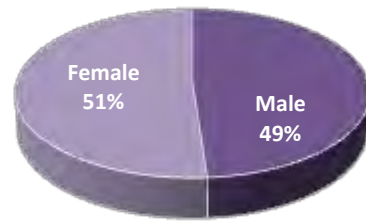
Census data retrieved from <http://factfinder.census.gov>. Data from 2000 is the most current.

Census Data



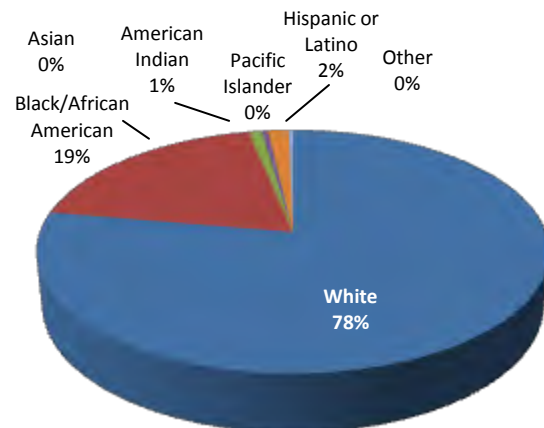
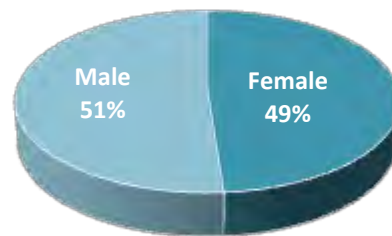
Suwannee County:

2006 Estimated Population:	34,844
Male:	17012
Female:	17832
White:	29455
Black/African American:	4221
American Indian:	137
Asian:	179
Pacific Islander:	13
Hispanic or Latino:	1703
Other:	391
Median Family Income:	\$34,032
Of the Population Over Age 25:	
High School Graduate:	17206
Bachelor Degree or Higher:	2462



Taylor County:

2006 Estimated Population:	19,256
Male:	9833
Female:	9423
White:	14988
Black/African American:	3666
American Indian:	188
Asian:	85
Pacific Islander:	3
Hispanic or Latino:	295
Other:	61
Median Family Income:	\$35,061
Of the Population Over Age 25:	
High School Graduate:	9041
Bachelor Degree or Higher:	1147



Census data retrieved from <http://factfinder.census.gov>. Data from 2000 is the most current.

Glossary of Terms



Academic Year – The fall, spring, and summer terms of overlapping calendar years. For example, fall 2006, spring 2007, and summer 2007 comprise the 2006-2007 academic year. This differs from the reporting year which begins with summer and ends with spring.

Accreditation – Certification by an official review board that specific requirements have been met. NFCC is accredited by the Southern Association of Colleges and Schools (SACS).

Adult Basic Education (ABE) – Education for adults to help them attain basic or functional literacy skills.

Advanced & Professional (A&P) – A program area with courses designed to provide the first two years of course work leading to an advanced or professional degree (bachelors, masters, etc.). It includes general education and specialized lower-division courses necessary to transfer into a degree program.

Associate in Arts (AA) – A program of instruction that consists of courses offered to freshmen and sophomores. This degree will transfer to the state university system and is awarded when a student completes 60 hours of college credit along with specified performance requirements.

Associate in Applied Science (AAS) – A program of instruction with courses to prepare students for entry into employment. These courses are usually not transferrable to a baccalaureate program.

Associate in Science (AS) – A program of instruction with courses to prepare students for entry into employment or college transfer. These courses are more likely transferrable to a baccalaureate program than the AAS.

College Credit – The type of credit assigned to courses that are part of an organized and specified college degree or program.

Credit Hour – The number of contact hours for a course.

Dual Enrollment – Enrollment in two institutions at the same time, such as a college and high school, which allows students to earn both high school and college credit simultaneously.

Duplicated Headcount – A headcount measure by which students may be counted in more than one category. This measure usually describes the number of seats taken across multiple courses.

First Time in College (FTIC) – A student attending college for the first time with no prior credit toward a degree or formal award.

Full-time equivalency (FTE) – A measure to describe various cohorts of students based on the number of student credit hours generated. FTE is computed by dividing the total number of credit or clock hours by 30.

Full-time Student – A student who is registered for 12 or more credit hours in the fall and spring semesters or four or more credit hours in the summer semester.

General Education Development (GED) Test – A measure designed to provide an opportunity for adults who have not graduated from high school to earn a State of Florida High School diploma by measuring the major academic skills and knowledge associated with a high school program of study.

Part-time Student – A student who is registered for less than 12 credit hours in the fall and spring terms or fewer than four credit hours in the summer term.

Postsecondary Adult Vocational Program (PSAV) – Job preparatory programs through which a student may receive a vocational certificate upon completion of instruction.

Postsecondary Vocational (PSV) – Vocational education for students who have left or completed high school and who are enrolled in an organized program of study for which credit is given toward an associate degree.

Reporting Year – The summer, fall, and spring terms of overlapping calendar years. For example, summer 2006, fall 2007, and spring 2007 comprise the 2006-2007 reporting year. This differs from the academic year which begins with fall and ends with summer.

Returning Students – Students enrolled for the current term who were also enrolled in a prior term at the College.

Unduplicated Headcount – A headcount measure by which students are counted in only one category.

Vocational Certificate – The award for satisfactory completion of a program of study designed to prepare students for entry into an occupation.

Workforce Education Program – Training and/or retraining for adults who are out of school and already in the workforce.

NFCC FACT BOOK 2007-2008

Compiled by the NFCC Office of Institutional Effectiveness, Research & Planning

John Dennis Grosskopf
Acting President

325 NW Turner Davis Drive
Madison, FL 32340

850-973-2288
www.nfcc.edu



NFCC is accredited by the Commission on Colleges of the Southern Association of Colleges and Schools to award the associate degree.