

# NFC



**2012 FACT BOOK**

**NORTH FLORIDA COMMUNITY COLLEGE**



# NFCC

*Small College. Big Possibilities.*

Our mission is to provide innovative solutions and quality support services to help members of our College community effectively achieve their goals. The 2009-2010 NFCC Fact Book provides information about North Florida Community College and includes student, financial, and personnel data. We have made every effort to ensure timely and accurate information. We hope you will use this publication on a continual basis. We welcome feedback and suggestions, and our measure of success is the degree to which people find this publication informative and useful.

# Table of Contents

---

## **Enrollment**

Student Headcount.....	5
FTE.....	5
By Program.....	6
By County .....	8
By Gender.....	12
By Age .....	13
By Ethnicity.....	14
By Time of Day .....	17
Instructor/Student Ratio.....	17

## **Student Success**

Degrees Awarded .....	19
Graduates by Program.....	19
First Time in College Retentions.....	20
College Preparatory Retentions.....	21
Vocational Placement.....	22
Student Transfer Data .....	23
Grade Distribution .....	24

## **Distance Learning**

Total Courses and Students .....	26
Student Demographics .....	27

## **Dual Enrollment**

Enrollment & Cost by County.....	29
----------------------------------	----

## **Financial Aid**

Total Distribution .....	33
Awards by County .....	34

## **Other Information**

NFCC Library .....	37
NFCC Foundation .....	39
Personnel .....	41
Finances .....	43
District Data (2010 Census).....	46
Glossary of Terms .....	52

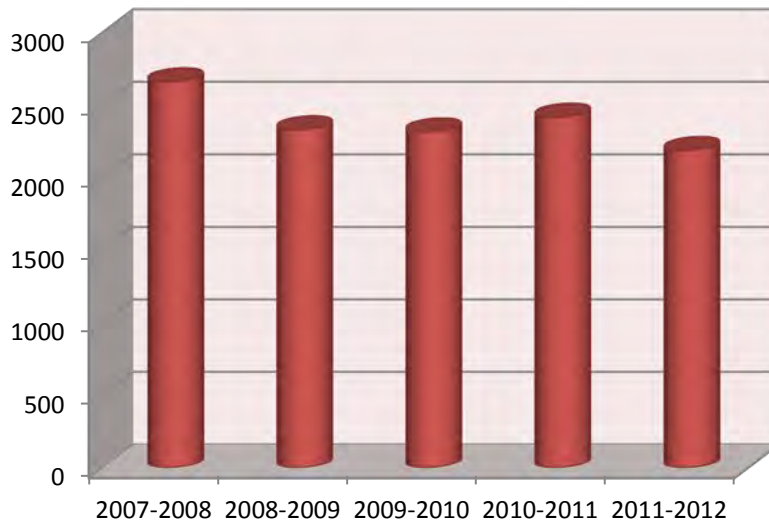


# ENROLLMENT

# Section 1: Enrollment

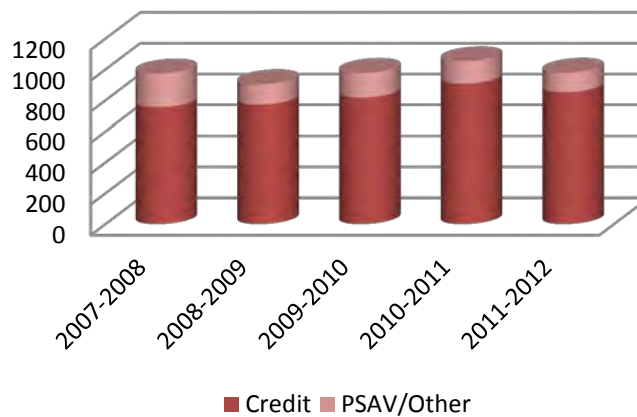
## Total Student Headcount (2007-2012)

2007-2008	2008-2009	2009-2010	2010-2011	2011-2012
2663	2332	2317	2419	2189



## Total Student FTE (2007-2012)

	2007-2008	2008-2009	2009-2010	2010-2011	2011-2012
<b>Credit</b>	754	771	816	907	851.64
<b>PSAV/Other</b>	218	132	160	145	125.87
<b>Total</b>	<b>972</b>	<b>903</b>	<b>976</b>	<b>1052</b>	<b>977.51</b>

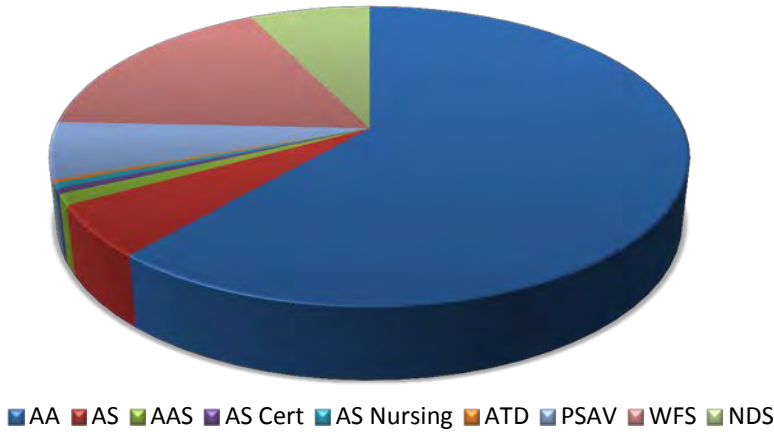


# Enrollment

---

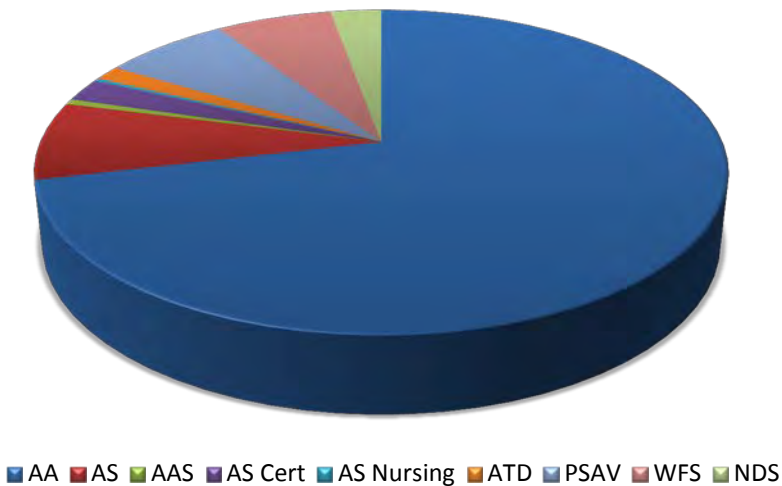
## Enrollment by Program (2011-2012)

Fall 2011



Program:		
AA	989	61%
AS	89	6%
AAS	19	1%
AS Cert	9	1%
AS Nursing	9	1%
ATD	5	0%
PS AV	99	6%
WFS	274	17%
NDS	117	7%
<b>Total</b>	<b>1610</b>	

Spring 2012



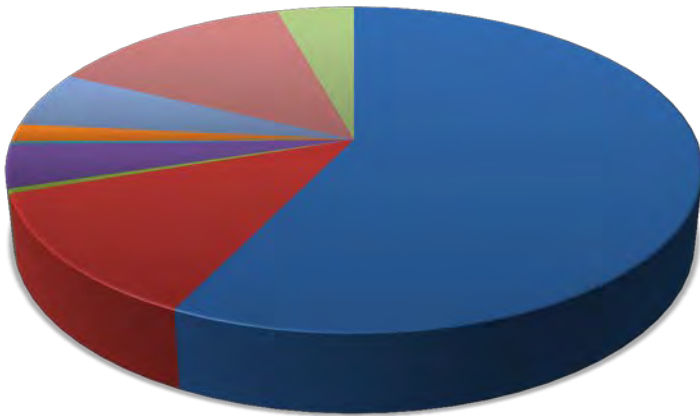
Program:		
AA	930	71%
AS	102	8%
AAS	7	1%
AS Cert	30	2%
AS Nursing	4	0%
ATD	19	1%
PS AV	92	7%
WFS	84	6%
NDS	37	3%
<b>Total</b>	<b>1345</b>	

# Enrollment

---

## Enrollment by Program (2011-2012)

Summer 2012



Program		
AA	314	41%
AS	134	17%
AAS	7	1%
ATD	15	2%
PSAV	54	7%
WFS	189	25%
NDS	57	7%
<b>Total</b>	<b>770</b>	

■ AA ■ AS ■ AAS ■ AS Cert ■ AS Nursing ■ ATD ■ PSAV ■ WFS ■ NDS

### Legend of programs:

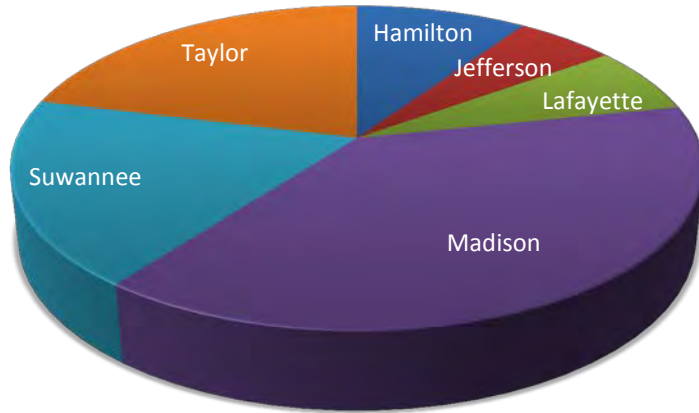
- AA: Associates in Arts
- AS: Associates in Science
- AAS: Associates in Applied Science
- AS Cert: Associates in Science Certificate
- ATD: Applied Technical Diploma
- EPI: Educator Preparation Institute
- PSAV: Post-Secondary Adult Vocational Certificate
- WFS: Workforce / Supplemental
- NDS: Non-Degree Seeking

# Enrollment

## County Enrollment by Term (2011-2012)

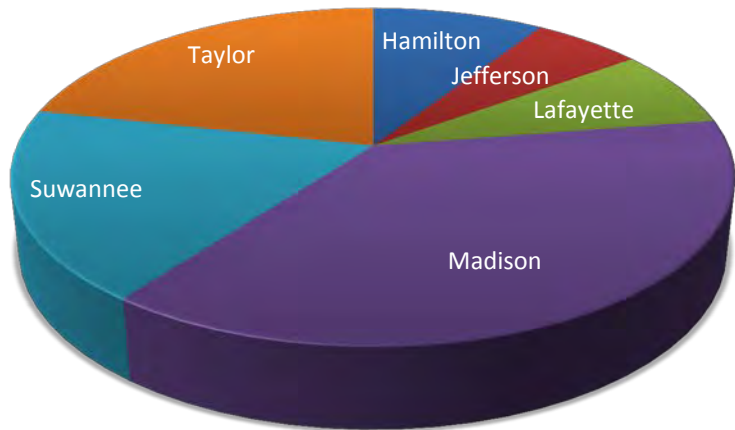
### Fall 2011

County:		
Hamilton	138	8.6%
Jefferson	80	5.0%
Lafayette	97	6.0%
Madison	560	34.8%
Suwannee	269	16.7%
Taylor	306	19.0%
Other FL	136	8.4%
Out of State	24	1.5%
<b>Total</b>	<b>1610</b>	



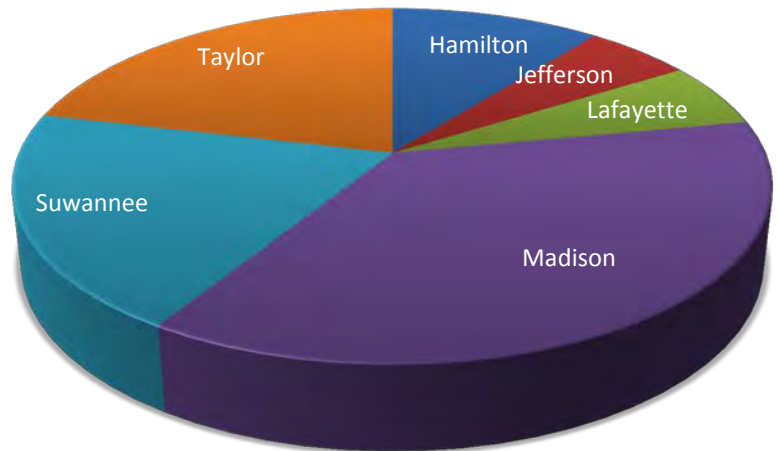
### Spring 2012

County:		
Hamilton	107	8.2%
Jefferson	68	5.2%
Lafayette	88	6.7%
Madison	441	33.8%
Suwannee	214	16.4%
Taylor	251	19.2%
Other FL	122	9.3%
Out of State	14	1.1%
<b>Total</b>	<b>1305</b>	



### Summer 2012

County:		
Hamilton	63	9.3%
Jefferson	32	4.7%
Lafayette	35	5.2%
Madison	218	32.2%
Suwannee	117	17.3%
Taylor	126	18.6%
Other FL	66	9.7%
Out of State	21	3.1%
<b>Total</b>	<b>678</b>	





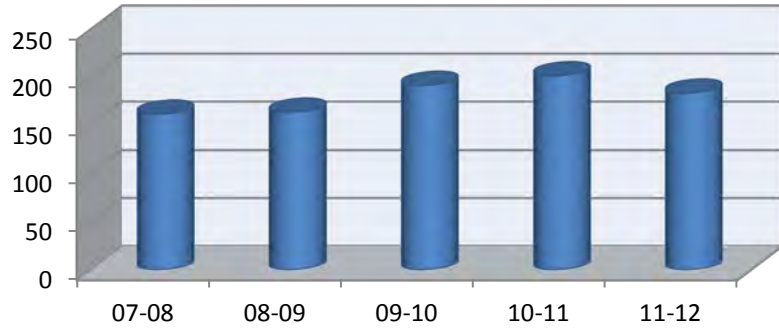
# Enrollment

---

## 5 Year County Enrollment (2007-2012)

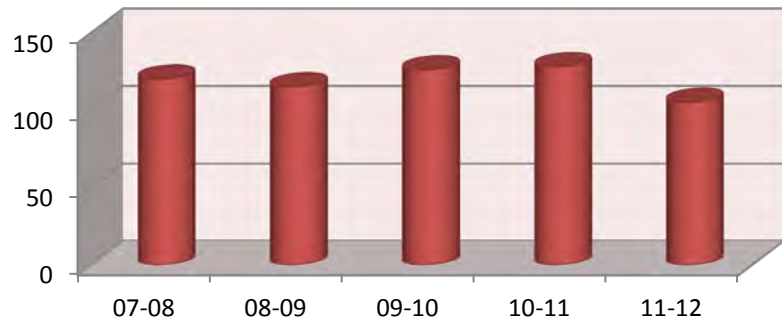
### Hamilton

07-08	162
08-09	164
09-10	192
10-11	202
11-12	184



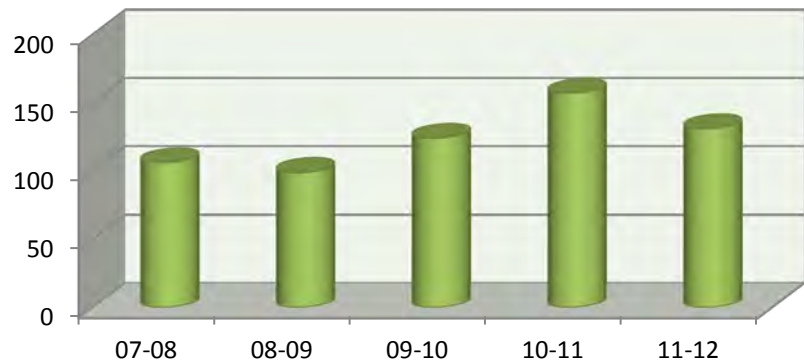
### Jefferson

07-08	120
08-09	115
09-10	126
10-11	128
11-12	105



### Lafayette

07-08	106
08-09	99
09-10	124
10-11	157
11-12	131

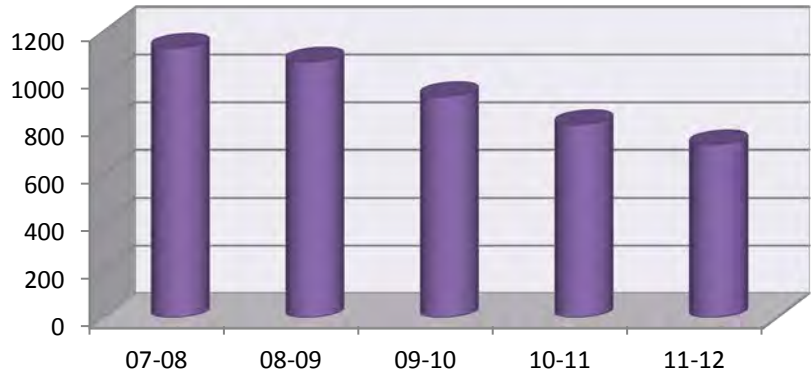


# Enrollment

## 5 Year County Enrollment (2007-2012)

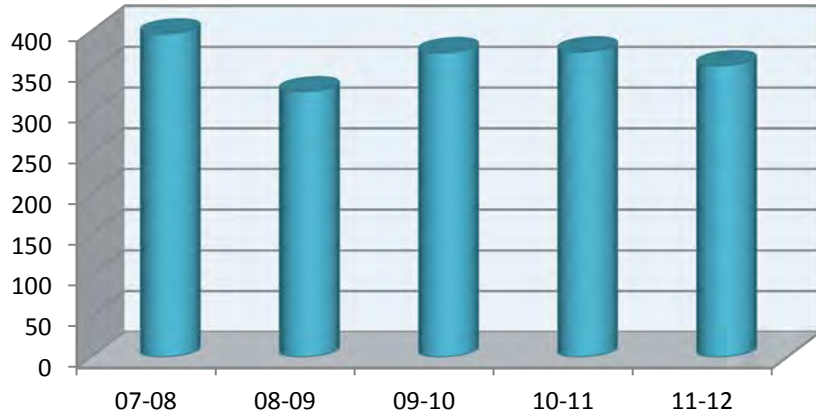
### Madison

07-08	1131
08-09	1073
09-10	928
10-11	810
11-12	725



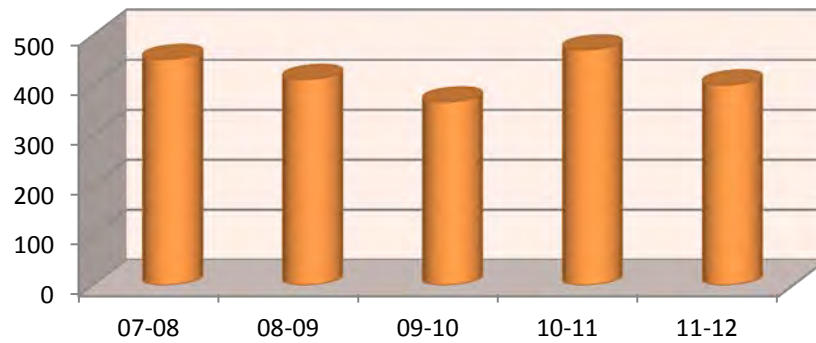
### Suwannee

07-08	397
08-09	326
09-10	374
10-11	375
11-12	358



### Taylor

07-08	452
08-09	412
09-10	367
10-11	471
11-12	401

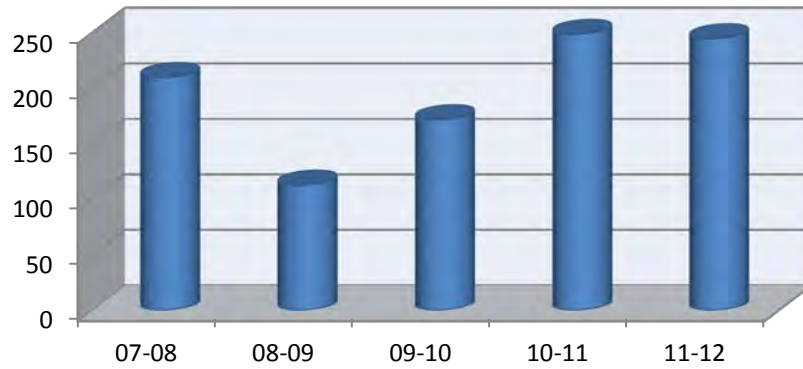


# Enrollment

## 5 Year County Enrollment (2007-2012)

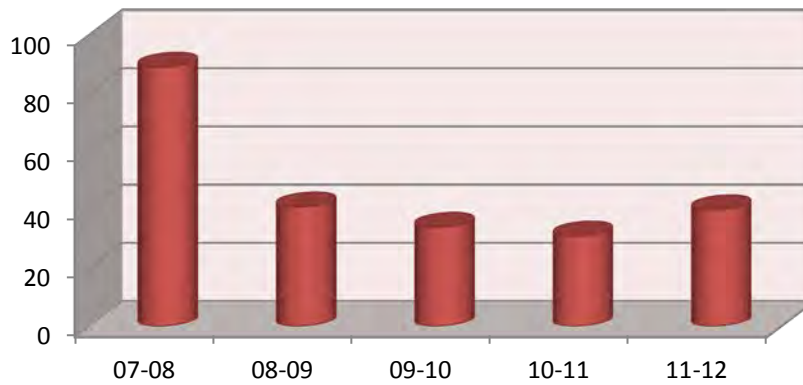
### Other Florida

07-08	210
08-09	113
09-10	172
10-11	249
11-12	245



### Out of State

07-08	89
08-09	41
09-10	34
10-11	31
11-12	40



## District High School Graduates Enrolled (2006-2011)

	2006-07	2007-08	2008-09	2009-10	2010-11
District Grads Enrolled in NFCC	26.0%	25.3%	25.2%	25.7%	26.0%
FL Grads in their District CC	31.6%	33.2%	34.6%	34.6%	33.0%

# Enrollment

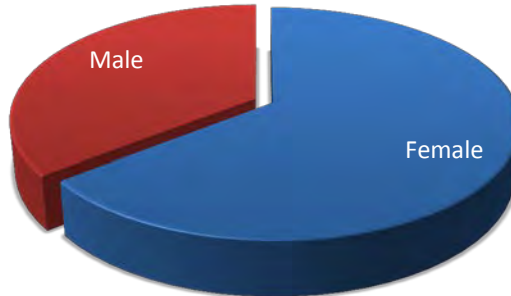
---

## Enrollment by Gender (2011-2012)

---

### Fall 2011

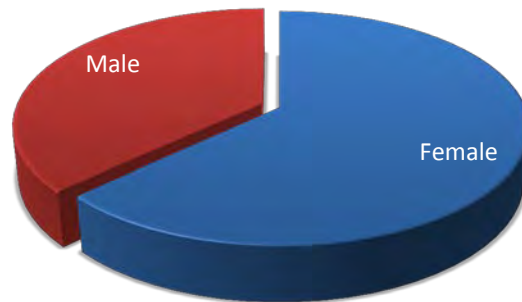
Female	1000	62%
Male	610	38%



---

### Spring 2012

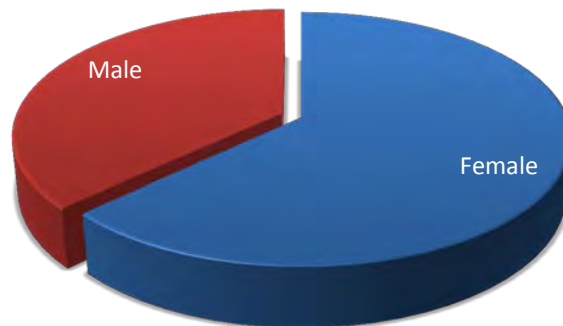
Female	852	65%
Male	453	35%



---

### Summer 2012

Female	423	62%
Male	255	38%



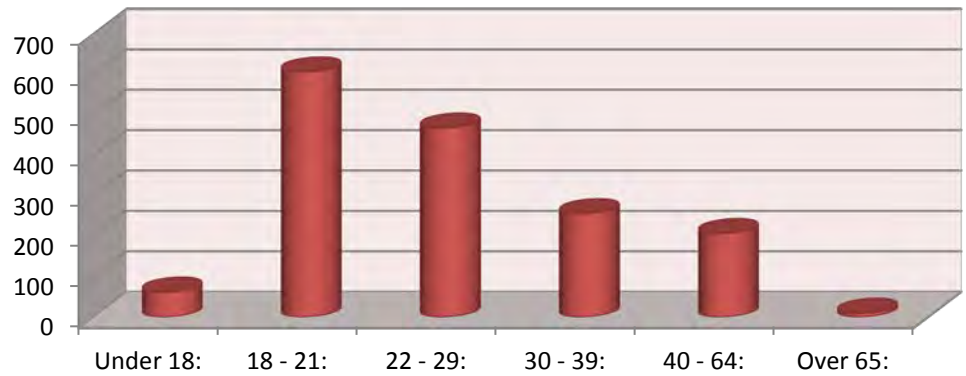
# Enrollment

---

## Enrollment by Age (2011-2012)

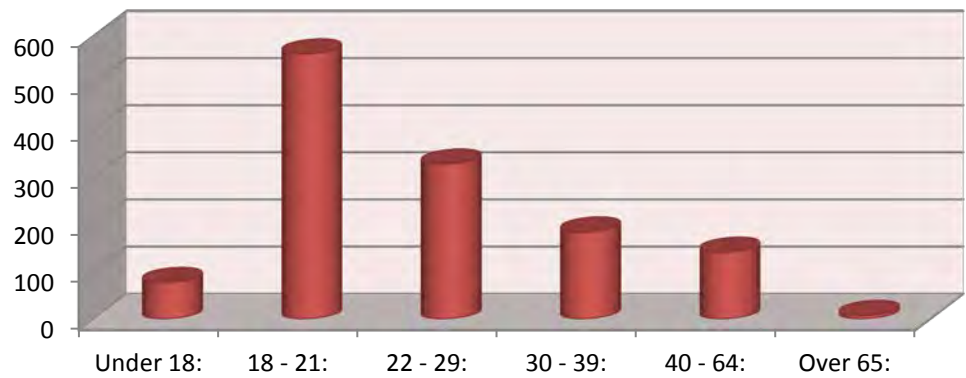
### Fall 2011

<b>Under 18:</b>	62
<b>18 - 21:</b>	607
<b>22 - 29:</b>	468
<b>30 - 39:</b>	256
<b>40 - 64:</b>	207
<b>Over 65:</b>	10
<b>Total:</b>	1610
<b>Average Age:</b>	27



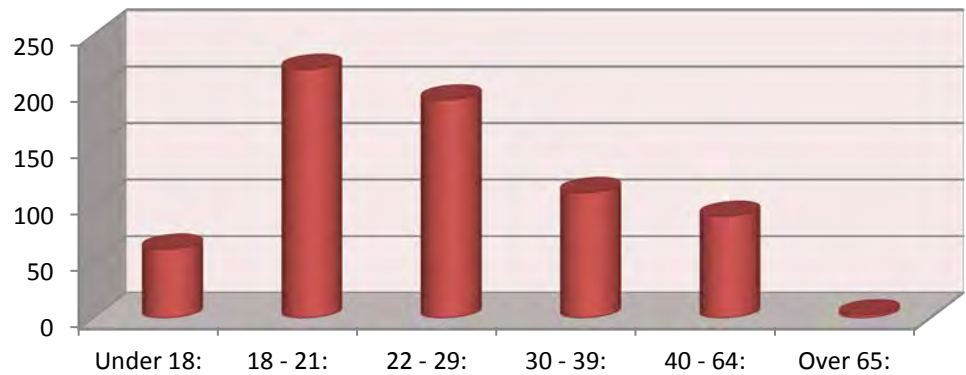
### Spring 2012

<b>Under 18:</b>	78
<b>18 - 21:</b>	563
<b>22 - 29:</b>	329
<b>30 - 39:</b>	185
<b>40 - 64:</b>	142
<b>Over 65:</b>	8
<b>Total:</b>	1305
<b>Average Age:</b>	26



### Summer 2012

<b>Under 18:</b>	61
<b>18 - 21:</b>	220
<b>22 - 29:</b>	193
<b>30 - 39:</b>	111
<b>40 - 64:</b>	90
<b>Over 65:</b>	3
<b>Total:</b>	678
<b>Average Age:</b>	27



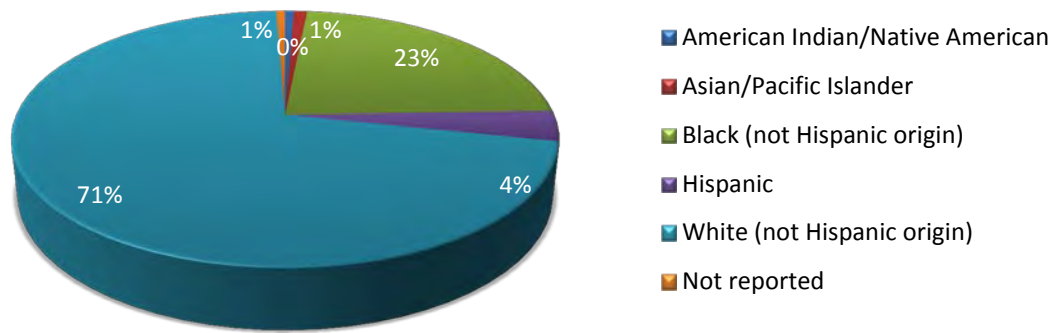
# Enrollment

---

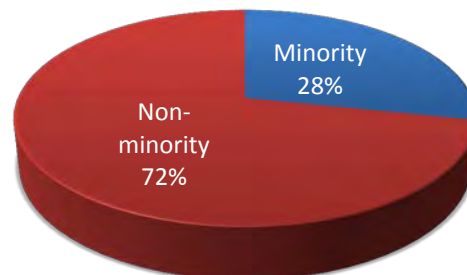
## Enrollment by Ethnicity (2011-2012)

FALL 2011

	#	%
American Indian/Native American	10	1%
Asian/Pacific Islander	15	1%
Black (not Hispanic origin)	369	23%
Hispanic	62	4%
White (not Hispanic origin)	1144	71%
Not reported	10	1%
<b>Total</b>	<b>1610</b>	



	#
Minority	456
Non-minority	1144

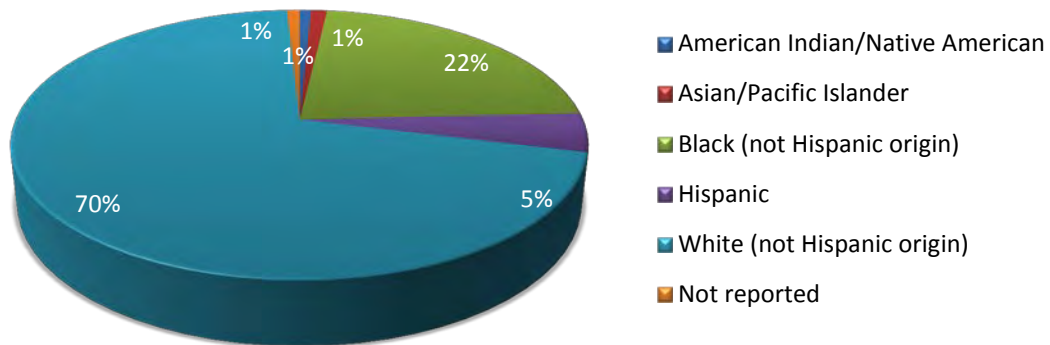


# Enrollment

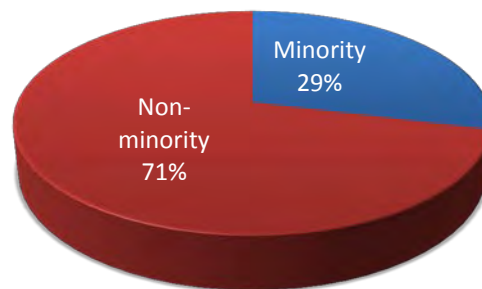
## Enrollment by Ethnicity (2011-2012)

SPRING 2012

	#	%
American Indian/Native American	10	1%
Asian/Pacific Islander	14	1%
Black (not Hispanic origin)	292	22%
Hispanic	61	5%
White (not Hispanic origin)	917	70%
Not reported	11	1%
<b>Total</b>	<b>1305</b>	



	#
Minority	377
Non-minority	917



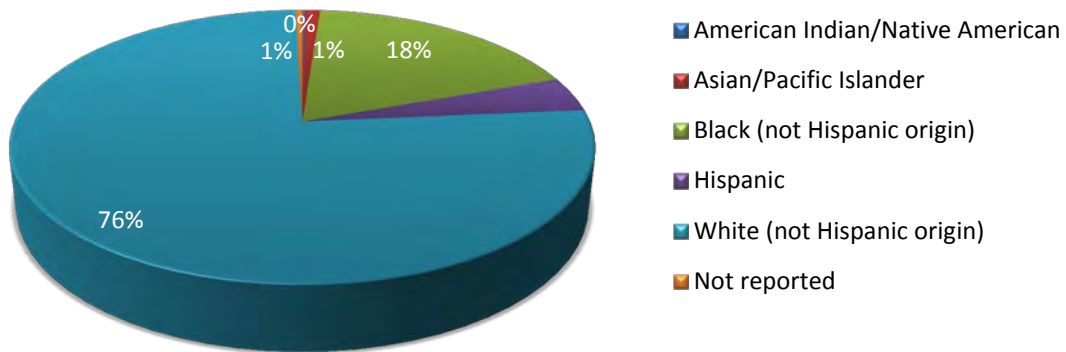
# Enrollment

---

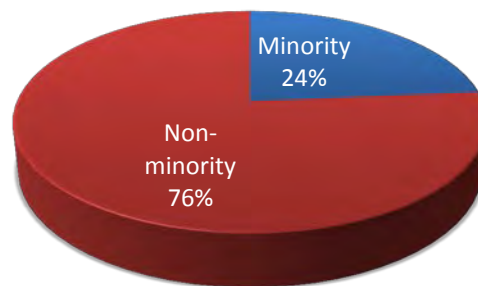
## Enrollment by Ethnicity (2011-2012)

SUMMER 2012

	#	%
American Indian/Native American	1	0.1%
Asian/Pacific Islander	7	1%
Black (not Hispanic origin)	124	18%
Hispanic	28	4%
White (not Hispanic origin)	515	76%
Not reported	3	0%
<b>Total</b>	<b>678</b>	



	#
Minority	160
Non-minority	515





## Enrollment

---

### Student Schedule by Day & Time (2011-2012)

#### Fall 2011

	Monday	Tuesday	Wednesday	Thursday	Friday	Saturday
8:00 - 9:15 a.m.	414	364	424	354	193	50
9:30 - 10:45 a.m.	287	390	281	390	42	0
11:00 - 12:15 p.m.	272	168	272	168	5	0
12:30 - 1:45 p.m.	258	267	239	261	24	28
2:00 - 4:00 p.m.	255	128	245	177	2	0
5:00 p.m. or later	309	354	283	326	46	0

#### Spring 2012

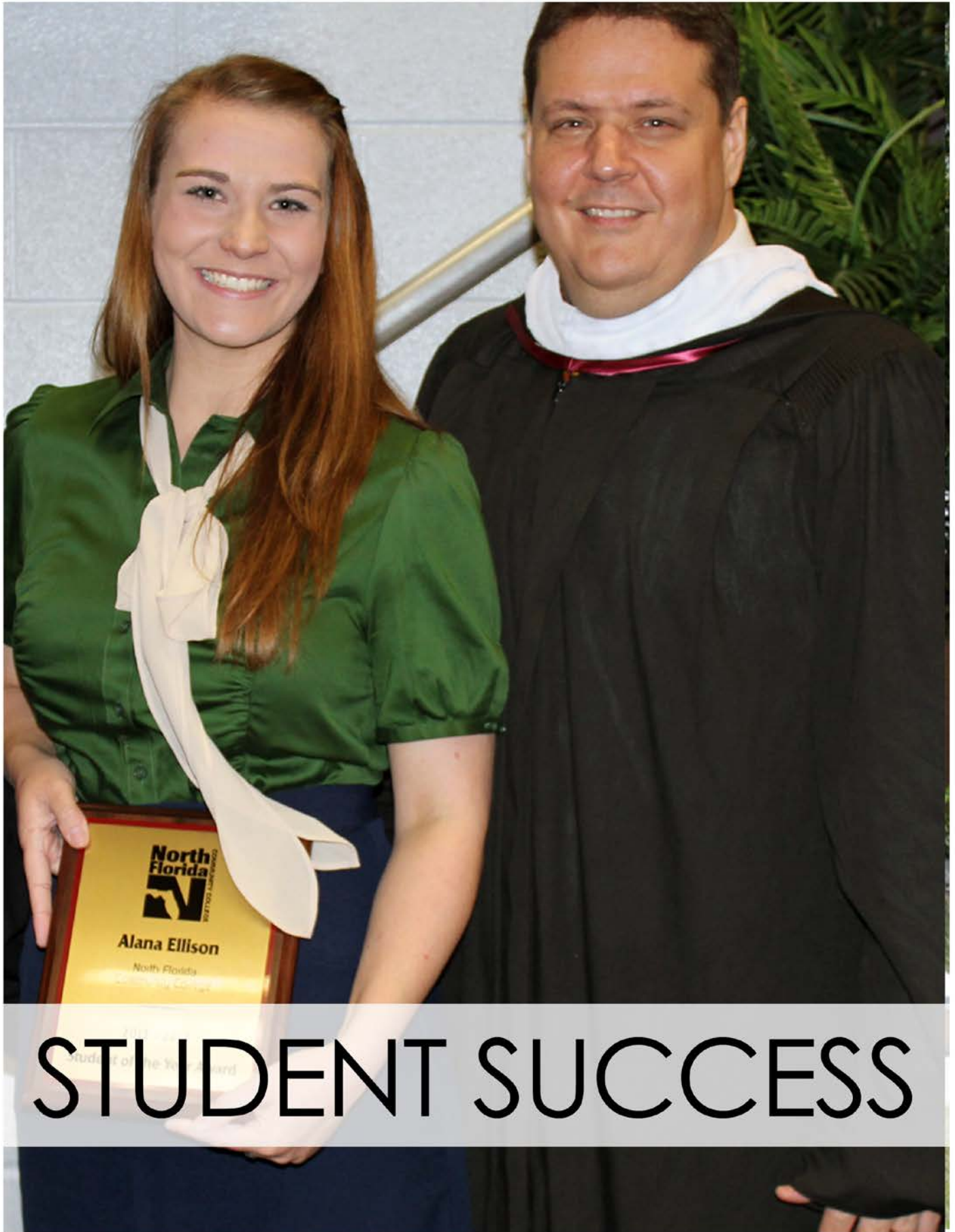
	Monday	Tuesday	Wednesday	Thursday	Friday	Saturday
8:00 - 9:15 a.m.	263	250	260	238	69	41
9:30 - 10:45 a.m.	283	290	283	290	27	0
11:00 - 12:15 p.m.	202	184	202	184	33	0
12:30 - 1:45 p.m.	168	179	165	178	98	31
2:00 - 4:00 p.m.	109	151	109	178	2	0
5:00 p.m. or later	159	243	150	315	13	13

### Instructor to Student Ratio (2007-2012)

	Students	Courses	Instructors	Ratio
07-08	2665	876	112	24
08-09	2343	721	104	23
09-10	2317	634	105	22
10-11	2423	687	110	22
11-12	2189	620	102	21

### Average Class Size (2011-2012)

	Credit	PSAV	College Prep
Fall	23	15	15
Spring	21	15	19
Summer	17	16	15



STUDENT SUCCESS

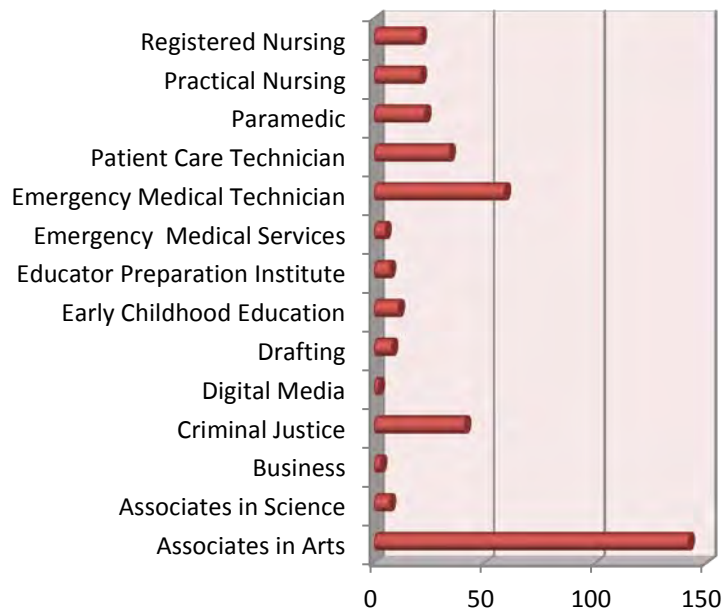
# Section 2: Student Success

## Degrees Awarded (2007–2012)

	07-08	08-09	09-10	10-11	11-12
<b>Associates in Arts</b>	114	159	137	166	142
<b>Associates in Science</b>	21	19	22	29	28
<b>Associates in Applied Science</b>	6	5	4	5	3
<b>ATD</b>	27	21	50	68	59
<b>College Credit Certificates</b>	12	0	31	20	6
<b>Certificates</b>	116	105	140	125	110
<b>Educator Preparation</b>	23	15	14	11	7
<b>Total</b>	319	324	398	424	355

## Graduates by Program (2011-2012)

Associates in Arts	<b>142</b>	Educator Preparation Institute	<b>7</b>
Associates in Science	<b>7</b>	Emergency Medical Services	<b>5</b>
Business	<b>3</b>	Emergency Medical Technician	<b>59</b>
Criminal Justice	<b>41</b>	Patient Care Technician	<b>34</b>
Digital Media	<b>2</b>	Paramedic	<b>23</b>
Drafting	<b>8</b>	Practical Nursing	<b>21</b>
Early Childhood Education	<b>11</b>	Registered Nursing	<b>21</b>



## Student Success

---

### First Time in College Retention & Success (2008 – 2012)

	Cohort	%Graduated	Retention Rate	Success Rate
<b>2012*</b>	125	47.20%	61.60%	76.80%
<b>2011*</b>	149	40.90%	56.38%	82.55%
<b>2010*</b>	152	43.42%	57.24%	83.55%
<b>2009*</b>	158	48.73%	62.66%	79.75%
<b>2008*</b>	133	35.34%	46.62%	81.20%

\*2012 tracking period Fall 2007 through 2012

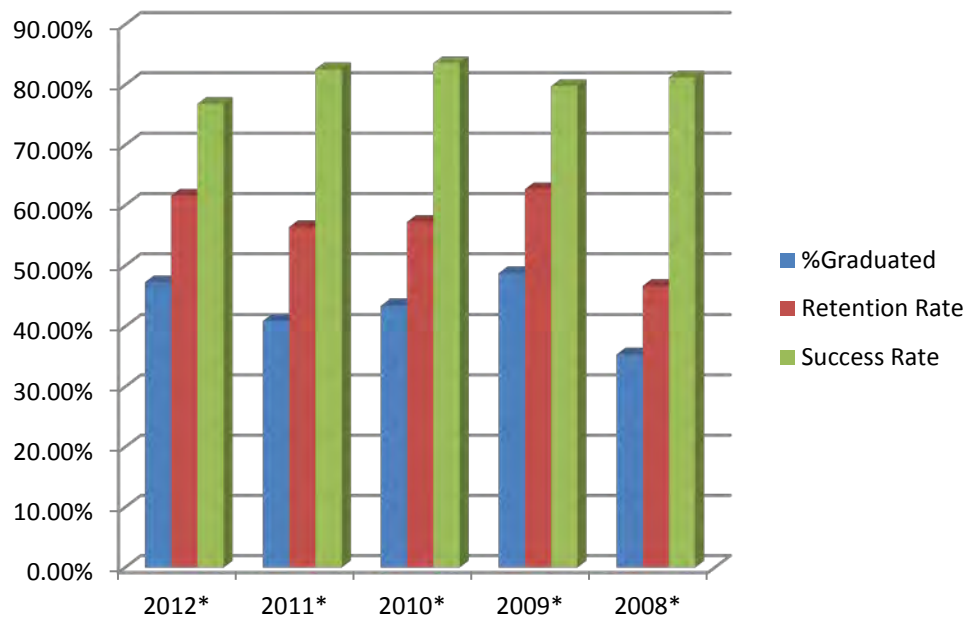
2011 tracking period Fall 2006 through 2011

2010 tracking period Fall 2005 through 2010

2009 tracking period Fall 2005 through 2009

2008 tracking period Fall 2003 through 2008

#### Accountability Outcome Measure 1 Part 2



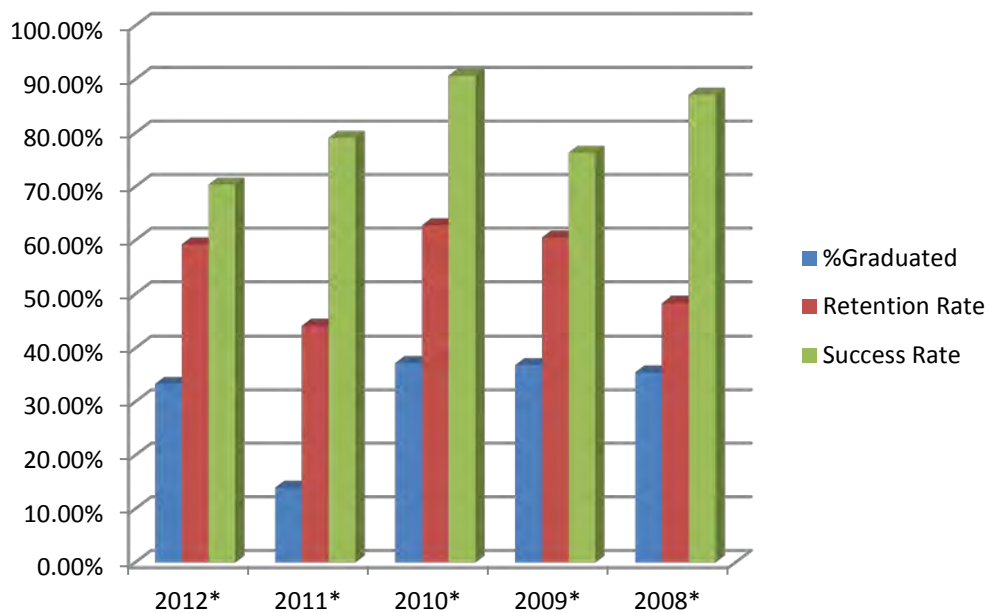
# Student Success

## College Preparatory Retention & Success (2008 – 2012)

	Cohort	%Graduated	Retention Rate	Success Rate
<b>2012*</b>	27	33.33%	59.26%	70.37%
<b>2011*</b>	43	13.95%	44.19%	79.07%
<b>2010*</b>	43	37.21%	62.79%	90.70%
<b>2009*</b>	38	36.84%	60.53%	76.32%
<b>2008*</b>	31	35.48%	48.39%	87.10%

\*2012 tracking period Fall 2007 through 2012  
 2011 tracking period Fall 2006 through 2011  
 2010 tracking period Fall 2005 through 2010  
 2009 tracking period Fall 2005 through 2009  
 2008 tracking period Fall 2003 through 2008

Accountability Outcome Measure 4 Part 2



## Student Success

### Vocational Placement (2008– 2010)

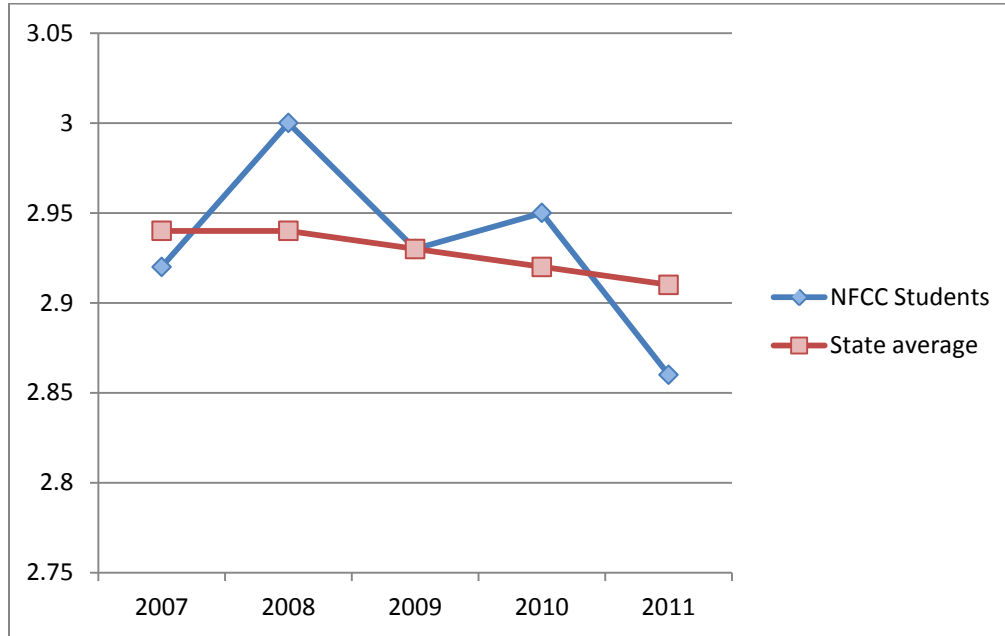
	2009-2010			2008-2009		
	Pool	Placed	%Placed	Pool	Placed	%Placed
<b>Administrative Assistant</b>	2	2	100.00%	-	-	-
<b>Archetctural Drafting</b>	4	4	100.00%	7	6	85.70%
<b>Correctional Officer</b>	18	17	94.44%	23	17	73.91%
<b>Criminal Justice Techology</b>	2	2	100.00%	4	4	100.00%
<b>Early Chidhood Education</b>	3	2	66.67%	5	5	100.00%
<b>Emergency Medial Technician</b>	32	22	68.75%	-	-	-
<b>Emergency Medical Services AS Degree</b>	3	3	100.00%	1	1	100.00%
<b>Law Enforcement Officer</b>	17	16	94.12%	17	13	76.47%
<b>Legal Secretary</b>	-	-	-	-	-	-
<b>Mechanical Drafting</b>	4	2	50.00%	-	-	-
<b>Nursing</b>	17	17	100.00%	16	16	100.00%
<b>Office Management</b>	1	1	100.00%	-	-	-
<b>Paramedic</b>	9	7	77.78%	2	2	100.00%
<b>Patient Care Technician</b>	32	30	93.75%	29	29	100.00%
<b>Practical Nursing</b>	18	18	100.00%	14	14	100.00%
<b>X Corrections Officer to Law Enforcement Officer</b>	-	-	-	12	12	100.00%

Accountability Outcome Measure 3 Part 2

## Student Success

### NFCC Transfer Success (2007-2011)

Mean cumulative grade-point averages for NFCC graduates who transfer to Florida public universities



	2007	2008	2009	2010	2011
<b>NFCC Students</b>	2.92	3.00	2.93	2.95	2.86
<b>State average</b>	2.94	2.94	2.93	2.92	2.91

Articulation Report Table 12

### Top Universities receiving NFCC Graduates

University	Avg. GPA
FSU – Tallahassee	2.87
FAMU – Tallahassee	2.68
UF – Gainesville	3.10
UCF – Orlando	2.69
UNF – Jacksonville	2.64
USF – Miami	2.96

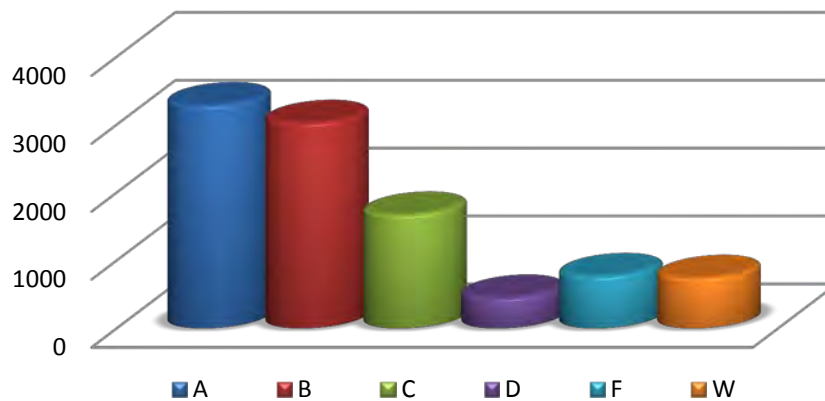
Articulation Report Table 12

## Student Success

---

### Grade Distribution in all NFCC Courses (2011-2012)

A	B	C	D	F	W	Total
3285	3022	1672	449	766	739	9933



### Grade Distribution in NFCC College Credit Courses (2011-2012)

A	B	C	D	F	W	Total
2651	2587	1424	378	644	603	8287

### Grade Distribution in NFCC College Prep Courses (2011-2012)

A	B	C	D	F	W	Total
48	162	209	69	71	101	660

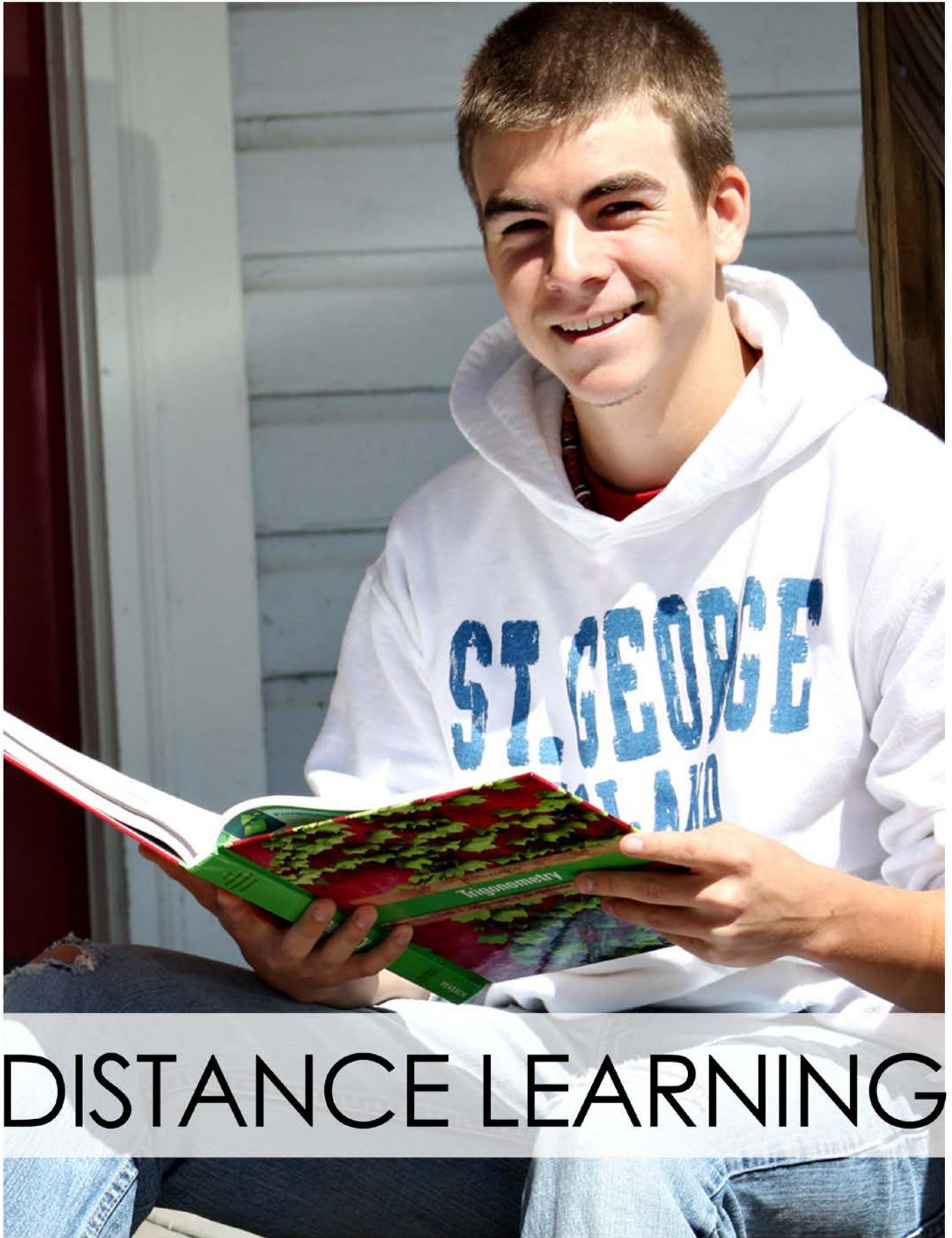
### Grade Distribution in NFCC PSAV Courses (2011-2012)

A	B	C	D	F	W	Total
586	272	38	2	35	35	968

### Grade Distribution in NFCC Online Courses (2011-2012)

A	B	C	D	F	W	Total
459	544	343	99	218	180	1843





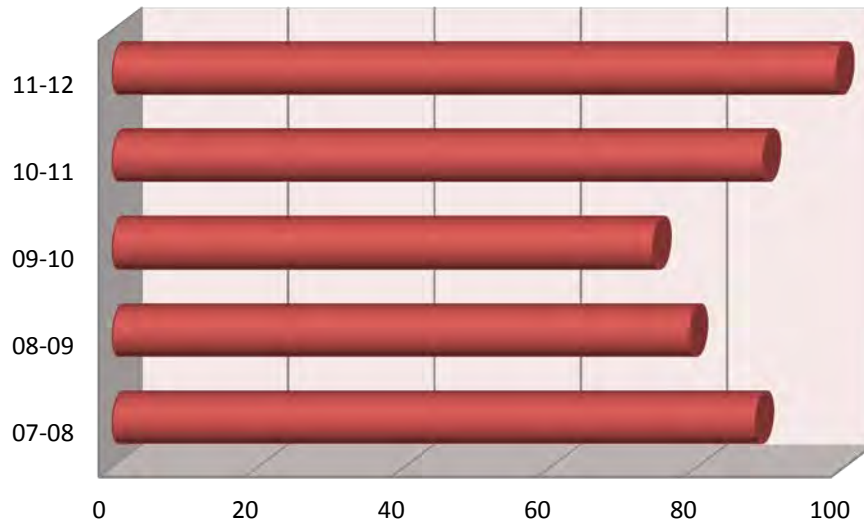
DISTANCE LEARNING

# Section 3: Distance Learning

---

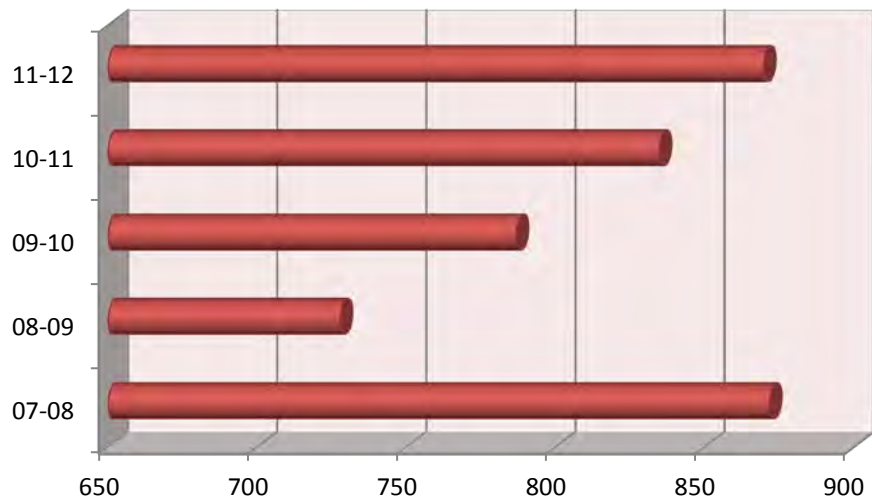
### Number of Online Courses (2007-2012)

Year	# of courses
07-08	88
08-09	79
09-10	74
10-11	89
11-12	99



### Number of Online Students (2007-2012)

Year	# of students
07-08	872
08-09	728
09-10	787
10-11	835
11-12	870

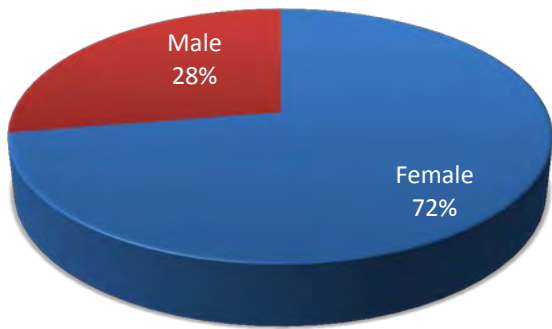


# Distance Learning

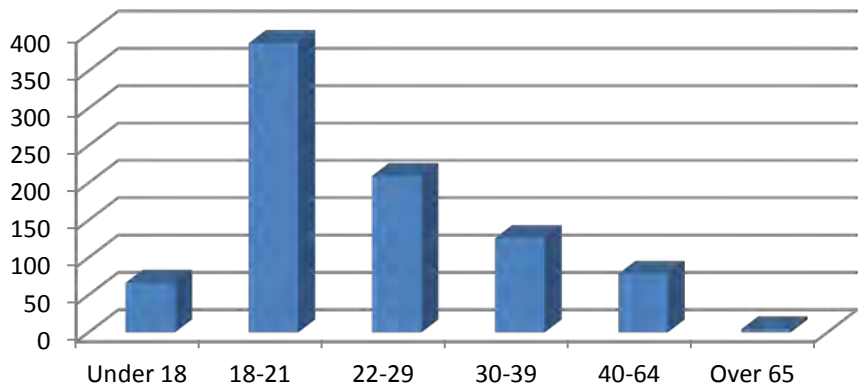
## Online Student Demographics (2011-2012)

### Gender

<b>Female</b>	630
<b>Male</b>	240



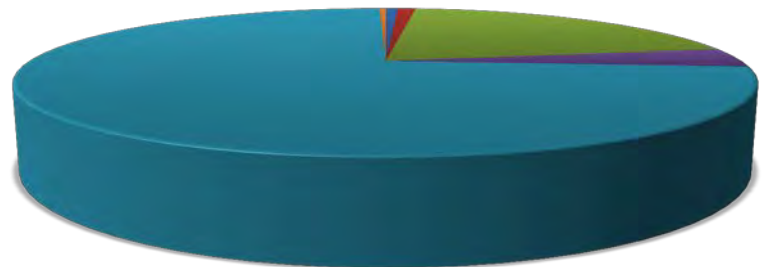
### Age



Under 18	18-21	22-29	30-39	40-64	Over 65
66	387	209	126	78	4

### Ethnicity

<b>American India/Alaskan Native:</b>	6
<b>Asian:</b>	9
<b>Black:</b>	177
<b>Hispanic:</b>	37
<b>White:</b>	638
<b>Not Reported:</b>	3



- American India/Alaskan Native
- Asian
- Black
- Hispanic
- White
- Not Reported



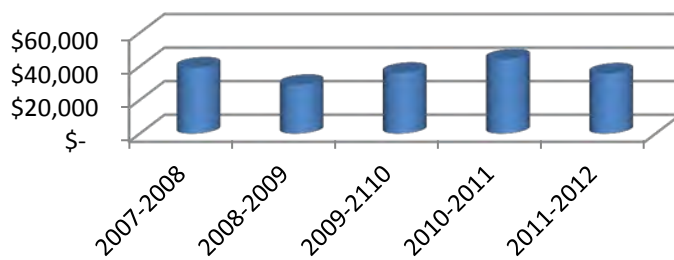
# DUAL ENROLLMENT

# Section 4: Dual Enrollment

## Number and cost of Dual Enrolled Student (2007-2012)

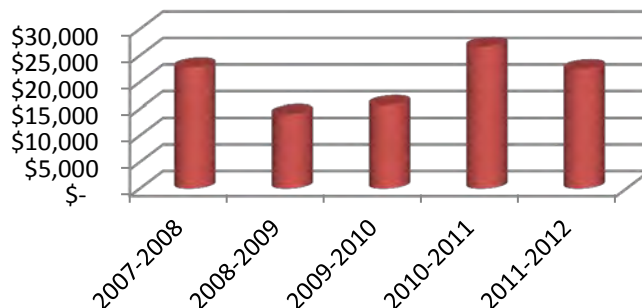
### Hamilton

	# of Students	Credit hours	County Value	Total NFCC DE Value	% Total DE Value
<b>2007-2008</b>	28	595	\$ 39,151	\$ 210,296	19%
<b>2008-2009</b>	29	395	\$ 28,835	\$ 230,899	12%
<b>2009-2110</b>	44	438	\$ 36,004	\$ 222,105	16%
<b>2010-2011</b>	37	500	\$ 44,000	\$ 300,754	15%
<b>2011-2012</b>	30	381	\$ 35,624	\$ 299,668	12%
<b>5 Yr. Total</b>	168	2309	\$ 183,614	\$ 1,263,722	



### Jefferson

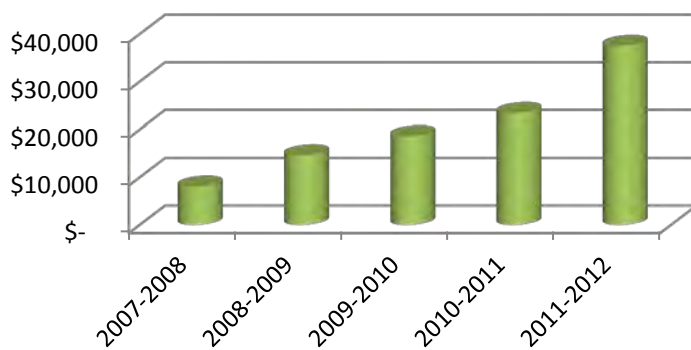
	# of Students	Credit hours	County Value	Total NFCC DE Value	% Total DE Value
<b>2007-2008</b>	26	364	\$ 22,766	\$ 210,296	11%
<b>2008-2009</b>	16	192	\$ 14,016	\$ 230,899	6%
<b>2009-2010</b>	20	191	\$ 15,700	\$ 222,105	7%
<b>2010-2011</b>	40	303	\$ 26,664	\$ 300,754	9%
<b>2011-2012</b>	22	240	\$ 22,440	\$ 299,668	7%
<b>5 Yr. Total</b>	124	1290	\$ 101,586	\$ 1,263,722	



## Dual Enrollment

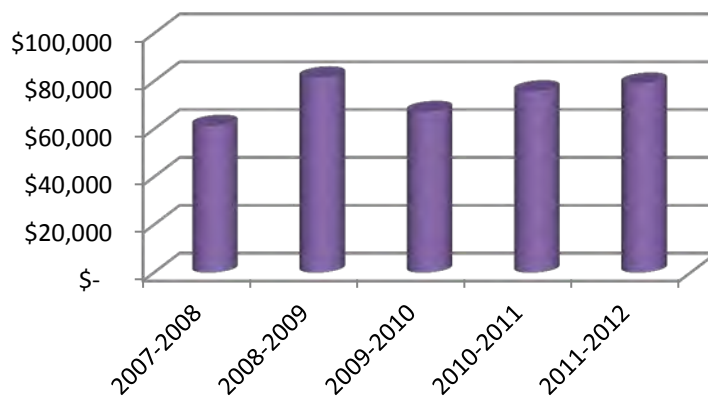
### Lafayette

	# of Students	Credit hours	County Value	Total NFCC DE Value	% Total DE Value
<b>2007-2008</b>	13	122	\$ 8,027	\$ 210,296	4%
<b>2008-2009</b>	19	200	\$ 14,600	\$ 230,899	6%
<b>2009-2010</b>	27	226	\$ 18,577	\$ 222,105	8%
<b>2010-2011</b>	33	266	\$ 23,408	\$ 300,754	8%
<b>2011-2012</b>	40	401	\$ 37,494	\$ 299,668	13%
<b>5 Yr. Total</b>	132	1215	\$ 102,106	\$ 1,263,722	



### Madison

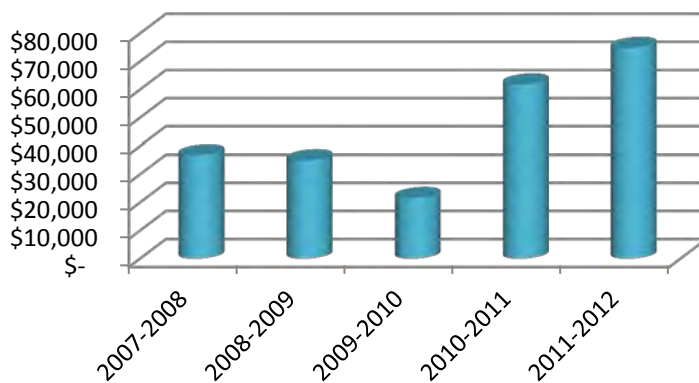
	# of Students	Credit hours	County Value	Total NFCC DE Value	% Total DE Value
<b>2007-2008</b>	83	932	\$ 61,325	\$ 210,296	29%
<b>2008-2009</b>	85	1117	\$ 81,541	\$ 230,899	35%
<b>2009-2010</b>	73	817	\$ 67,157	\$ 222,105	30%
<b>2010-2011</b>	65	861	\$ 75,768	\$ 300,754	25%
<b>2011-2012</b>	67	845	\$ 79,008	\$ 299,668	26%
<b>5 Yr. Total</b>	373	4572	\$ 364,799	\$ 1,263,722	



## Dual Enrollment

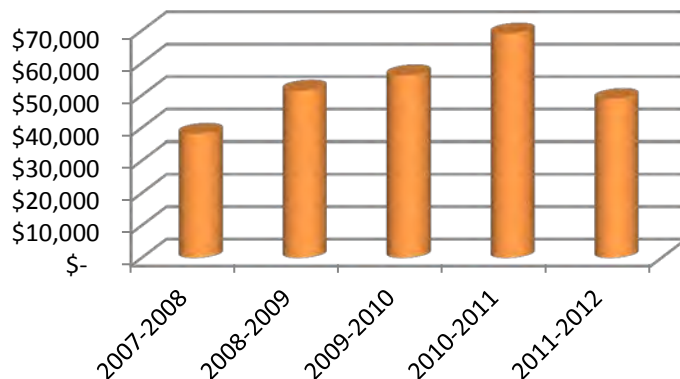
### Suwannee

	# of Students	Credit hours	County Value	Total NFCC DE Value	% Total DE Value
<b>2007-2008</b>	51	558	\$ 36,716	\$ 210,296	17%
<b>2008-2009</b>	44	479	\$ 34,967	\$ 230,899	15%
<b>2009-2010</b>	32	262	\$ 21,536	\$ 222,105	10%
<b>2010-2011</b>	64	702	\$ 61,776	\$ 300,754	21%
<b>2011-2012</b>	78	800	\$ 74,800	\$ 299,668	25%
<b>5 Yr. Total</b>	269	2801	\$ 229,795	\$ 1,263,722	



### Taylor

	# of Students	Credit hours	County Value	Total NFCC DE Value	% Total DE Value
<b>2007-2008</b>	52	580	\$ 38,164	\$ 210,296	18%
<b>2008-2009</b>	56	706	\$ 51,538	\$ 230,899	22%
<b>2009-2010</b>	69	684	\$ 56,225	\$ 222,105	25%
<b>2010-2011</b>	67	786	\$ 69,138	\$ 300,754	23%
<b>2011-2012</b>	46	523	\$ 48,901	\$ 299,668	16%
<b>5 Yr. Total</b>	290	3279	\$ 263,966	\$ 1,263,722	





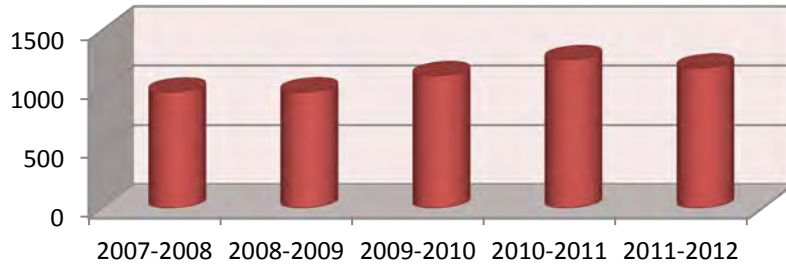
# FINACIAL AID



# Section 5: Financial Aid

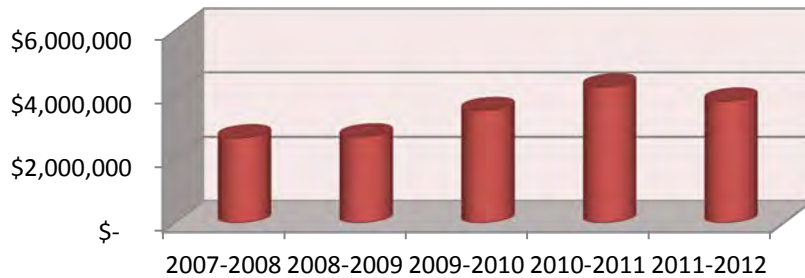
## Number of Financial Aid Awards (2007-2012)

<b>2007-2008</b>	979
<b>2008-2009</b>	980
<b>2009-2010</b>	1117
<b>2010-2011</b>	1253
<b>2011-2012</b>	1181



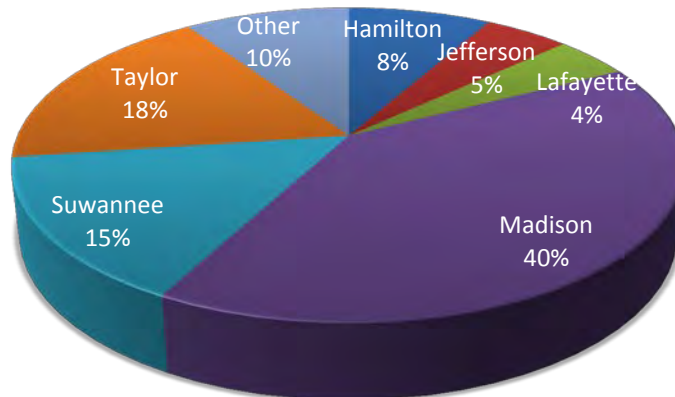
## Dollar Amount of Financial Aid Awards (2007-2012)

<b>2007-2008</b>	\$ 2,664,624
<b>2008-2009</b>	\$ 2,691,770
<b>2009-2010</b>	\$ 3,501,192
<b>2010-2011</b>	\$ 4,243,146
<b>2011-2012</b>	\$ 3,794,543



## Distribution by County (2011-2012)

<b>Hamilton</b>	\$ 310,662
<b>Jefferson</b>	\$ 185,296
<b>Lafayette</b>	\$ 163,660
<b>Madison</b>	\$ 1,534,922
<b>Suwannee</b>	\$ 568,508
<b>Taylor</b>	\$ 672,185
<b>Other</b>	\$ 359,309

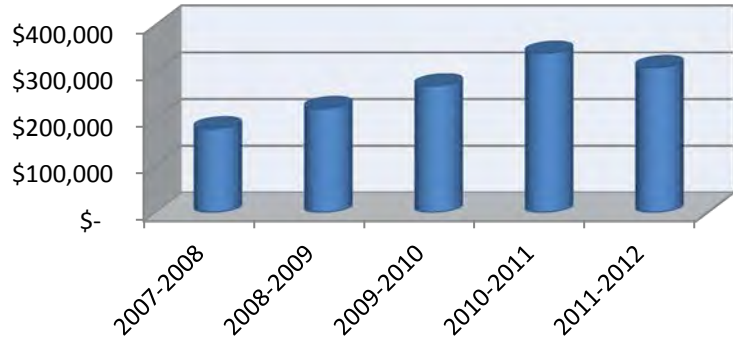


# Financial Aid

## Awards by County (In-District Only) 2011-2012

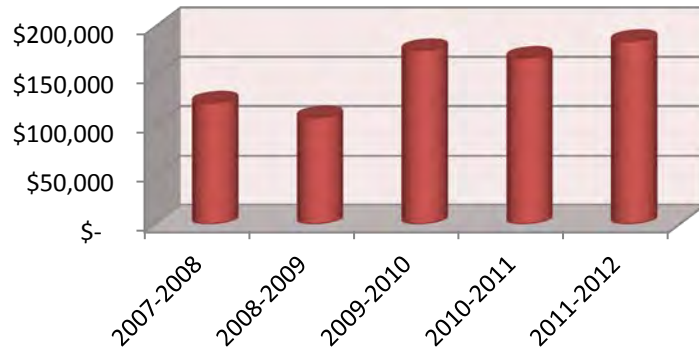
### Hamilton

	# of Students	Awards Paid
<b>2007-2008</b>	66	\$ 179,772
<b>2008-2009</b>	77	\$ 223,123
<b>2009-2010</b>	91	\$ 271,452
<b>2010-2011</b>	100	\$ 341,311
<b>2011-2012</b>	92	\$ 310,662



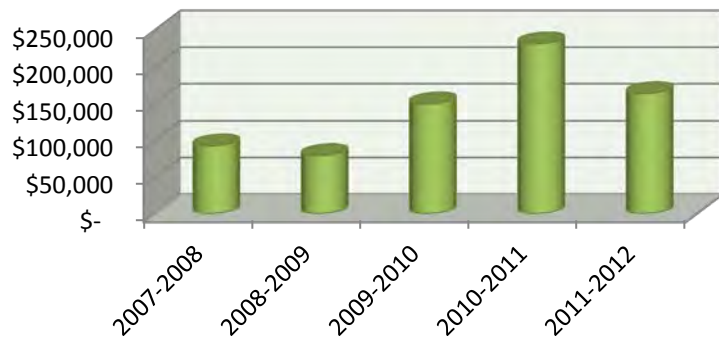
### Jefferson

	# of Students	Awards Paid
<b>2007-2008</b>	49	\$ 122,667
<b>2008-2009</b>	49	\$ 107,554
<b>2009-2010</b>	60	\$ 175,920
<b>2010-2011</b>	58	\$ 168,150
<b>2011-2012</b>	66	\$ 185,296



### Lafayette

	# of Students	Awards Paid
<b>2007-2008</b>	42	\$ 93,005
<b>2008-2009</b>	32	\$ 79,692
<b>2009-2010</b>	46	\$ 149,573
<b>2010-2011</b>	68	\$ 231,694
<b>2011-2012</b>	51	\$ 163,660

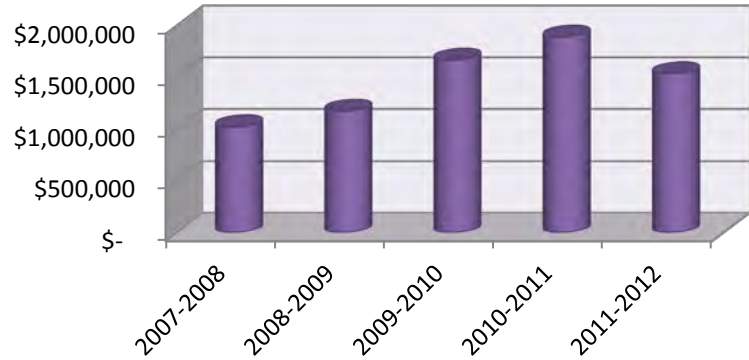


# Financial Aid

## Awards by County

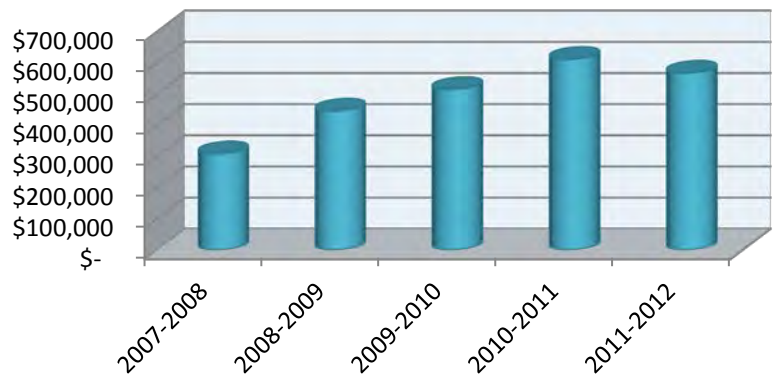
### Madison

	# of Students	Awards Paid
<b>2007-2008</b>	395	\$ 1,021,526
<b>2008-2009</b>	428	\$ 1,171,335
<b>2009-2010</b>	516	\$ 1,666,185
<b>2010-2011</b>	539	\$ 1,889,842
<b>2011-2012</b>	501	\$ 1,534,922



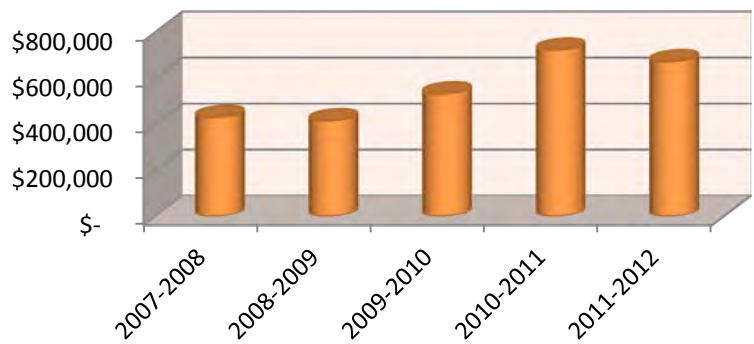
### Suwannee

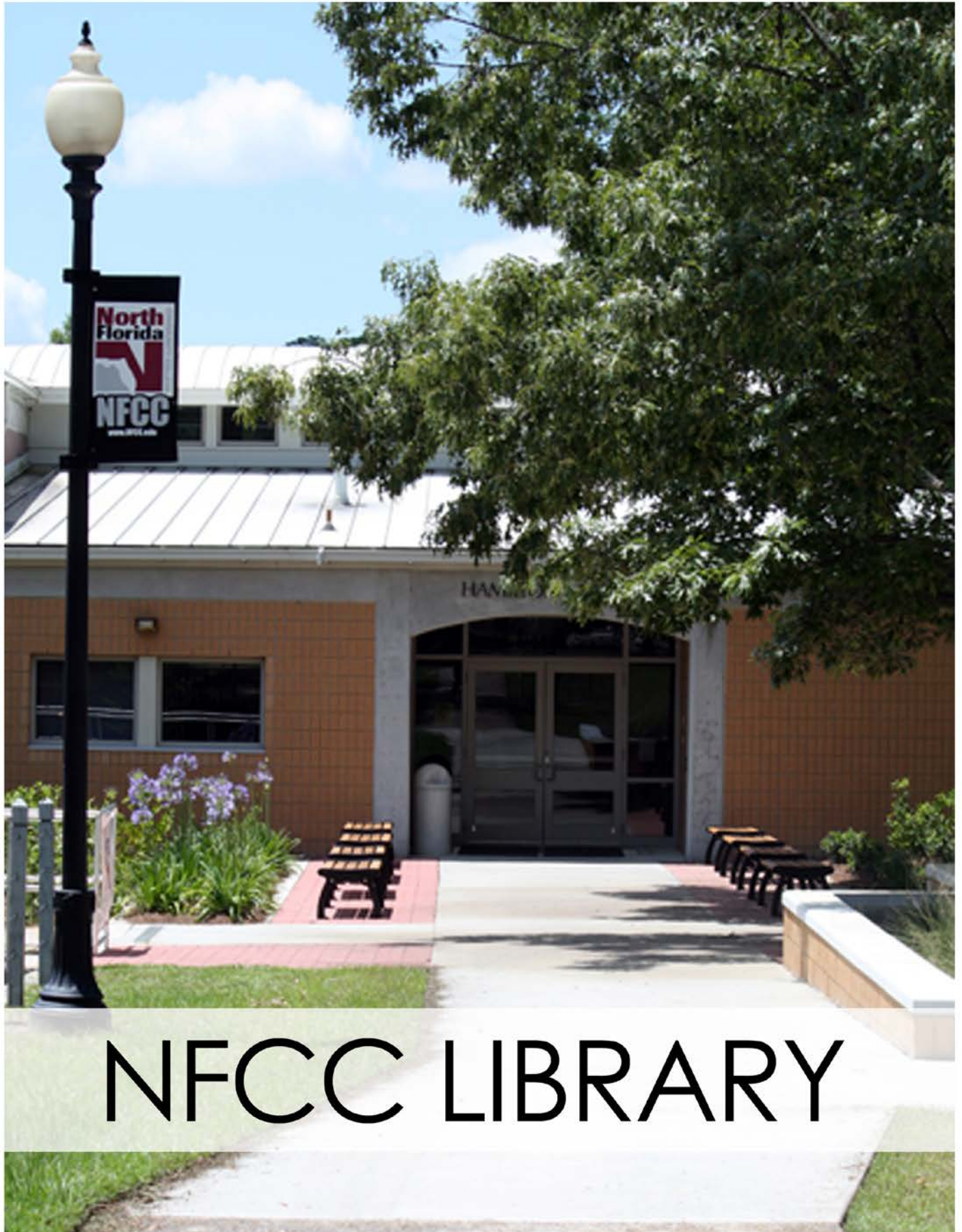
	# of Students	Awards Paid
<b>2007-2008</b>	129	\$ 309,210
<b>2008-2009</b>	154	\$ 446,688
<b>2009-2010</b>	164	\$ 515,958
<b>2010-2011</b>	177	\$ 612,692
<b>2011-2012</b>	164	\$ 568,508



### Taylor

	# of Students	Awards Paid
<b>2007-2008</b>	179	\$ 429,934
<b>2008-2009</b>	166	\$ 415,456
<b>2009-2010</b>	169	\$ 532,456
<b>2010-2011</b>	216	\$ 722,461
<b>2011-2012</b>	208	\$ 672,185





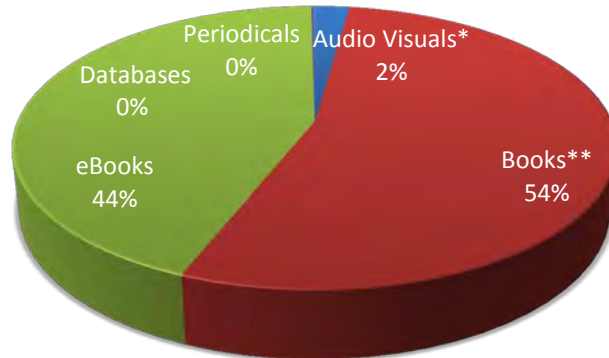
# NFCC LIBRARY

# Section 6: NFCC Library

---

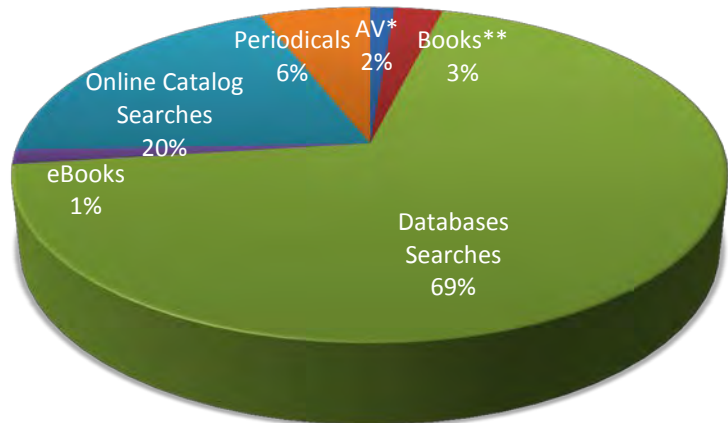
## 2011-2012 Collections

<b>Audio Visuals*</b>	1,540
<b>Books**</b>	37,391
<b>eBooks</b>	30,343
<b>Electronic Databases</b>	131
<b>Periodicals</b>	33



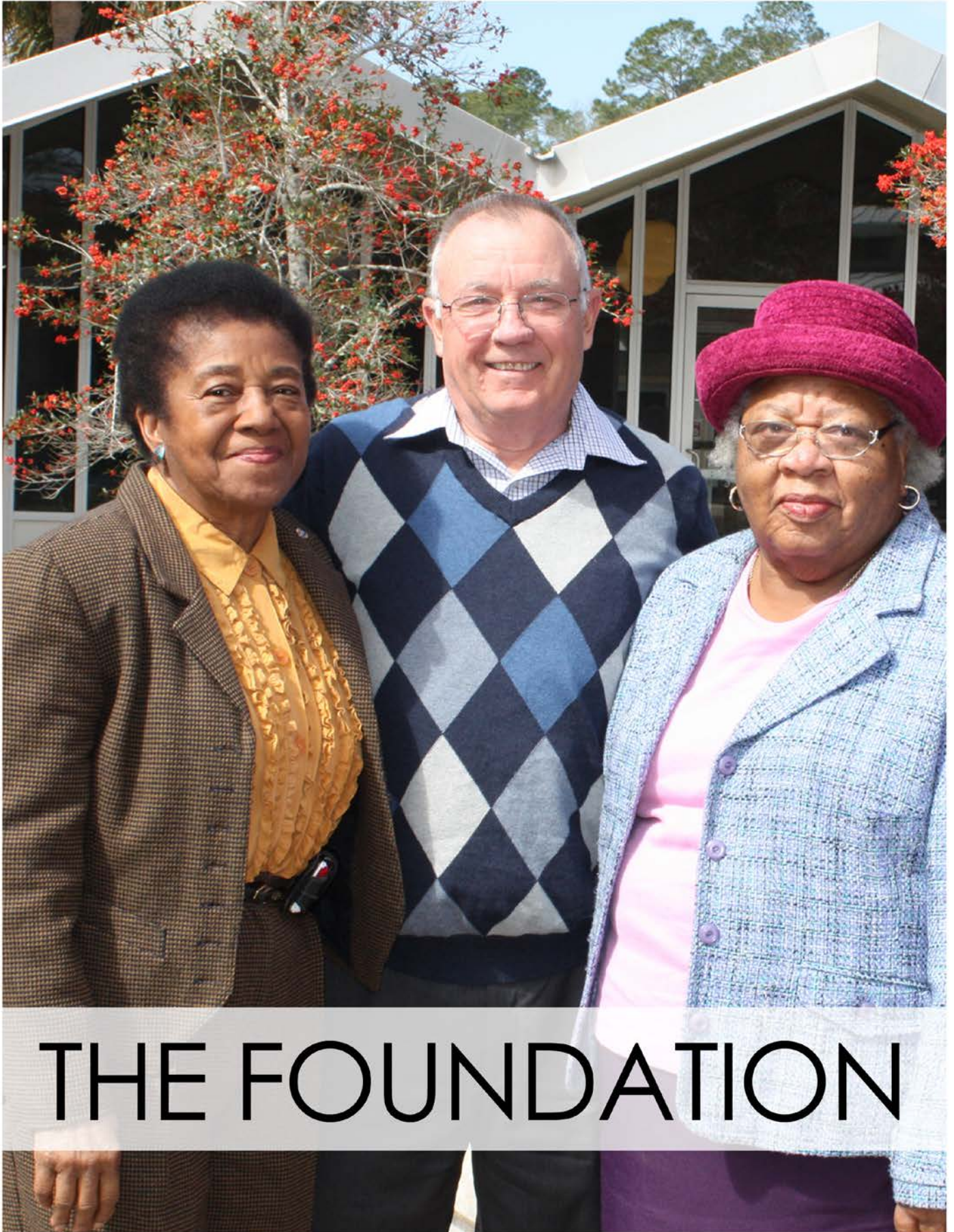
## 2011-2012 Circulation Statistics

<b>Audio Visuals*</b>	1,655
<b>Books**</b>	3,326
<b>Databases Searches</b>	87,469
<b>eBooks</b>	1,762
<b>Online Catalog Searches</b>	24,856
<b>Periodicals</b>	7,601



\*Audio visuals include audiocassettes, DVDs, CDs, and video tapes

\*\*Books includes titles from circulation and reference collections

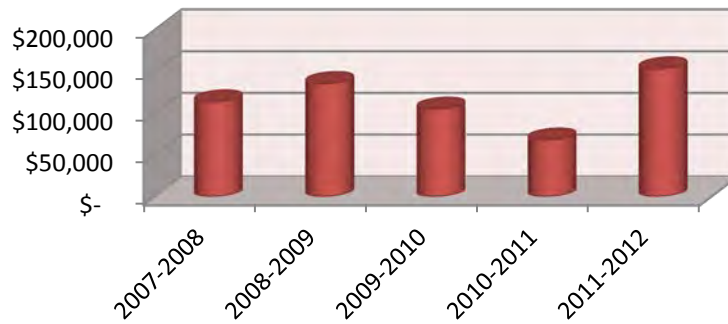


# THE FOUNDATION

# Section 7: NFCC Foundation

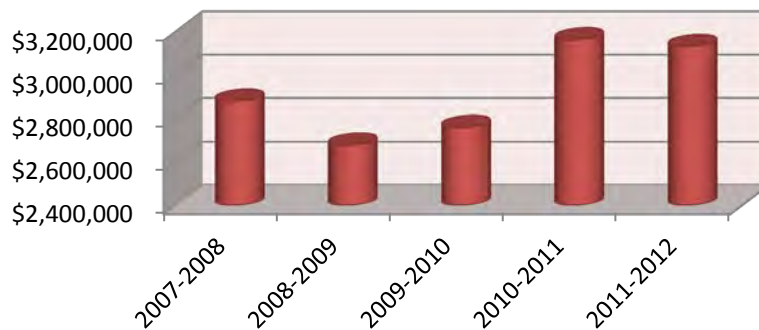
## Scholarships Awarded (2007-2012)

2007-2008	2008-2009	2009-2010	2010-2011	2011-2012
\$ 113,529	\$ 135,448	\$ 104,843	\$ 67,830	\$ 153,013



## Foundation Assets (2007-2012)

2007-2008	2008-2009	2009-2010	2010-2011	2011-2012
\$ 2,880,106	\$ 2,679,205	\$ 2,760,800	\$ 3,164,631	\$ 3,132,899





Art



# PERSONNEL

ART GREETING CARDS FOR SALE

Help support the  
NFCC Art Club Fundraiser

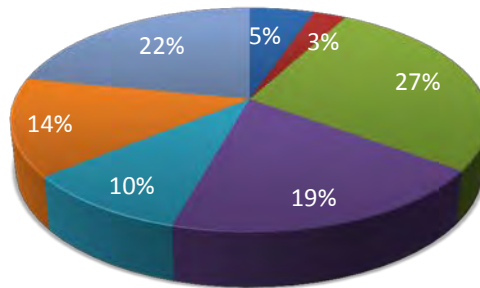


# Section 8: Personnel

## Full-Time Employees (2011-2012)

### By Degree

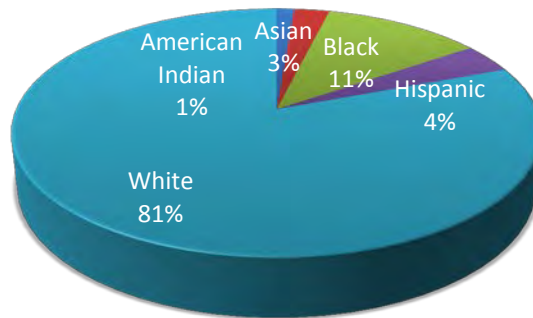
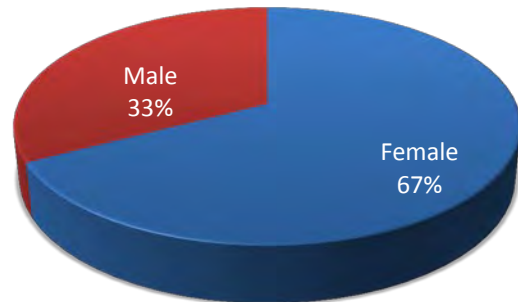
Doctorate	6
Advanced Specialist	3
Masters	31
Bachelors	22
Associates	11
Other	16
No Degree	25



- Doctorate
- Advanced Specialist
- Masters
- Bachelors
- Associates
- Other
- No Degree

### By Gender & Ethnicity

	Female	Male
American Indian	1	2
Asian	2	1
Black	9	2
Hispanic	3	2



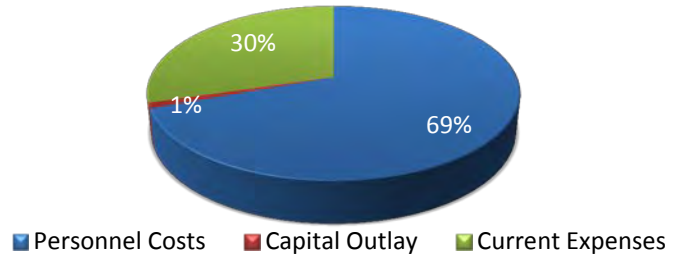


# FINANCES

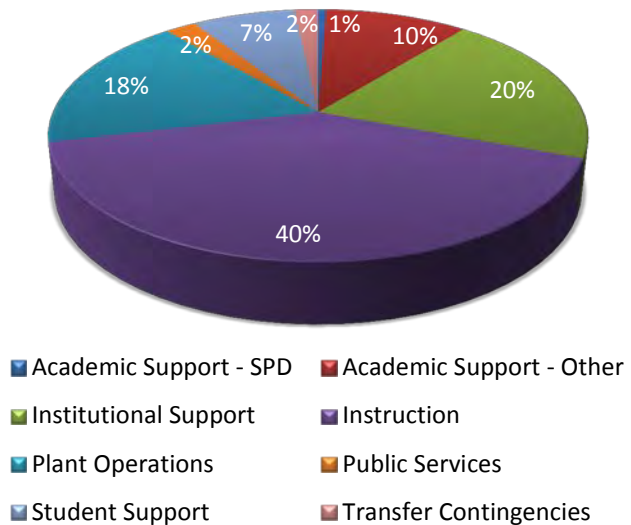
# Section 9: Finances

## General Fund Budget (2011-2012)

By Object	
Personnel Costs	\$ 6,106,236
Capital Outlay	\$ 87,321
Current Expenses	\$ 2,615,772
<b>Total</b>	<b>\$ 8,809,329</b>



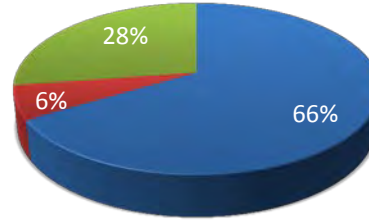
By Organizational Unit	
Academic Support - SPD	\$ 50,380
Academic Support - Other	\$ 899,987
Institutional Support	\$ 1,762,393
Instruction	\$ 3,561,566
Plant Operations	\$ 1,542,420
Public Services	\$ 192,906
Student Support	\$ 649,342
Transfer Contingencies	\$ 150,335
<b>Total</b>	<b>\$ 8,809,329</b>



# Finances

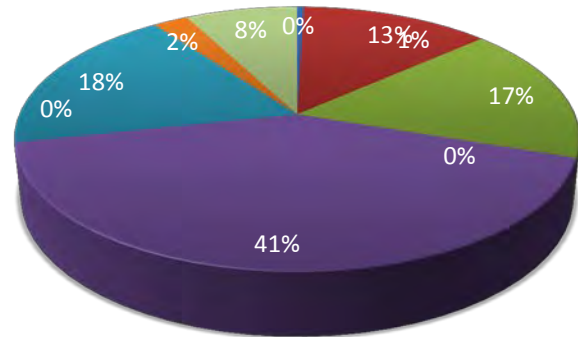
## General Fund Expenditures (2011-2012)

By Object	
Personnel Costs	\$ 5,620,948
Capital Outlay	\$ 531,735
Current Expenses	\$ 2,320,619
<b>Total</b>	<b>\$ 8,473,302</b>



■ Personnel Costs   
 ■ Capital Outlay   
 ■ Current Expenses

By Organizational Unit	
Academic Support - SPD	\$ 37,796
Academic Support - Other	\$ 1,098,022
Institutional Support	\$ 1,425,417
Instruction	\$ 3,505,582
Plant Operations	\$ 1,555,000
Public Services	\$ 201,137
Research	\$ -
Student Aid	\$ -
Student Support	\$ 647,992
Transfer Contingencies	\$ 2,356
<b>Total</b>	<b>\$ 8,473,302</b>



■ Academic Support - SPD   
 ■ Academic Support - Other   
 ■ Institutional Support  
■ Instruction   
 ■ Plant Operations   
 ■ Public Services  
■ Research   
 ■ Student Aid   
 ■ Student Support  
■ Transfer Contingencies



# DISTRICT DATA

## Section 9: District Data

### Hamilton County (2010 Census Data)

	County	FL
Population, 2010	14,799	18,801,310
Persons under 18, 2000 to 2010	21%	21.9%
White, 2010	59.8%	75%
Black, 2010	34.5%	16%
American Indian & Alaska Native, 2010	0.6%	0.4%
Asian, 2010	0.5%	2.4%
Native Hawaiian and Other Pacific Islander, 2010		0.1%
Two more races, 2010	1.7%	2.4%
Hispanic or Latino, 2010	8.8%	22.5%
White not Hispanic, 2010	54.9%	57.9%
High School Graduates, % of persons 25+ 2005-2009	70.7%	84.9%
Bachelor's degree or higher, % of persons 25+ 2005-2009	8.5%	25.6%
Per capita money income in past 12 months, 2005-2009	\$14,716	\$26,503
Person's below poverty level, 2009	28.5%	15.0%
Land area, square miles	514.86	53926.82



## District Data

### Jefferson County (2010 Census Data)

	County	FL
<b>Population, 2010</b>	14,761	18,801,310
<b>Persons under 18, 2000 to 2010</b>	19%	21.9%
<b>White, 2010</b>	60.40%	75%
<b>Black, 2010</b>	36.20%	16%
<b>American Indian &amp; Alaska Native, 2010</b>	0.30%	0.40%
<b>Asian, 2010</b>	0.40%	2.40%
<b>Native Hawaiian and Other Pacific Islander, 2010</b>		0.10%
<b>Two more races, 2010</b>	1.30%	2.40%
<b>Hispanic or Latino, 2010</b>	3.70%	22.50%
<b>White not Hispanic, 2010</b>	87.70%	57.90%
<b>High School Graduates, % of persons 25+ 2005-2009</b>	81.60%	84.90%
<b>Bachelor's degree or higher, % of persons 25+ 2005-2009</b>	17.30%	25.60%
<b>Per capita money income in past 12 months, 2005-2009</b>	\$20,323	\$26,503.00
<b>Person's below poverty level, 2009</b>	19.10%	15%
<b>Land area, square miles</b>	597.74	53926.82



## District Data

---

### Lafayette County (2010 Census Data)

	County	FL
Population, 2010	8,870	18,801,310
Persons under 18, 2000 to 2010	19.7%	21.9%
White, 2010	77.4%	75.0%
Black, 2010	15.9%	16.0%
American Indian & Alaska Native, 2010	0.4%	0.4%
Asian, 2010	0.1%	2.4%
Native Hawaiian and Other Pacific Islander, 2010		0.1%
Two more races, 2010	1.4%	2.4%
Hispanic or Latino, 2010	12.1%	22.5%
White not Hispanic, 2010	70.6%	57.9%
High School Graduates, % of persons 25+ 2005-2009	76.2%	84.9%
Bachelor's degree or higher, % of persons 25+ 2005-2009	6.7%	25.6%
Per capita money income in past 12 months, 2005-2009	\$16,575	\$26,503.00
Person's below poverty level, 2009	34.6%	15.0%
Land area, square miles	542.84	53926.82





## District Data

---

### Madison County (2010 Census Data)

	County	FL
Population, 2010	19,224	18,801,310
Persons under 18, 2000 to 2010	22.3%	21.9%
White, 2010	57.6%	75%
Black, 2010	38.8%	16%
American Indian & Alaska Native, 2010	0.5%	0.4%
Asian, 2010	0.2%	2.4%
Native Hawaiian and Other Pacific Islander, 2010		0.1%
Two more races, 2010	1.3%	2.4%
Hispanic or Latino, 2010	4.7%	22.5%
White not Hispanic, 2010	55.0%	57.9%
High School Graduates, % of persons 25+ 2005-2009	74.4%	84.9%
Bachelor's degree or higher, % of persons 25+ 2005-2009	11.1%	25.6%
Per capita money income in past 12 months, 2005-2009	\$16,486	\$26,503.00
Person's below poverty level, 2009	26.2%	15.0%
Land area, square miles	691.79	53926.82



## District Data

### Suwannee County (2010 Census Data)

	County	FL
Population, 2010	41,551	18,801,310
Persons under 18, 2000 to 2010	22.7%	21.9%
White, 2010	82.5%	75%
Black, 2010	11.4%	16%
American Indian & Alaska Native, 2010	0.5%	0.4%
Asian, 2010	0.5%	2.4%
Native Hawaiian and Other Pacific Islander, 2010		0.1%
Two more races, 2010	1.9%	2.4%
Hispanic or Latino, 2010	8.7%	22.5%
White not Hispanic, 2010	77.7%	57.9%
High School Graduates, % of persons 25+ 2005-2009	77.6%	84.9%
Bachelor's degree or higher, % of persons 25+ 2005-2009	8.8%	25.6%
Per capita money income in past 12 months, 2005-2009	\$17,798	\$26,503.00
Person's below poverty level, 2009	19.7%	15.0%
Land area, square miles	687.64	53926.82



## District Data

### Taylor County (2010 Census Data)

	County	FL
Population, 2010	22,570	18,801,310
Persons under 18, 2000 to 2010	20.6%	21.9%
White, 2010	75.2%	75%
Black, 2010	20.7%	16%
American Indian & Alaska Native, 2010	0.8%	0.4%
Asian, 2010	0.7%	2.4%
Native Hawaiian and Other Pacific Islander, 2010		0.1%
Two more races, 2010	1.7%	2.4%
Hispanic or Latino, 2010	3.4%	22.5%
White not Hispanic, 2010	73.0%	57.9%
High School Graduates, % of persons 25+ 2005-2009	79.9%	84.9%
Bachelor's degree or higher, % of persons 25+ 2005-2009	10.7%	25.6%
Per capita money income in past 12 months, 2005-2009	\$17,248	\$26,503.00
Person's below poverty level, 2009	23.8%	15.0%
Land area, square miles	1,041.91	53,926.82



# Glossary of Terms

**Academic Year** – The fall, spring, and summer terms of overlapping calendar years. For example, fall 2006, spring 2007, and summer 2007 comprise the 2006-2007 academic year. This differs from the reporting year, which begins with summer and ends with spring.

**Accreditation** – Certification by an official review board that specific requirements have been met. NFCC is accredited by the Southern Association of Colleges and Schools (SACS).

**Adult Basic Education (ABE)** – Education for adults to help them attain basic or functional literacy skills.

**Advanced & Professional (A&P)** – A program area with courses designed to provide the first two years of course work leading to an advanced or professional degree (bachelors, masters, etc.). It includes general education and specialized lower-division courses necessary to transfer into a degree program.

**Associate in Arts (AA)** – A program of instruction that consists of courses offered to freshmen and sophomores. This degree will transfer to the state university system and is awarded when a student completes 60 hours of college credit along with specified performance requirements.

**Associate in Applied Science (AAS)** – A program of instruction with courses to prepare students for entry into employment. These courses are usually not transferrable to a baccalaureate program.

**Associate in Science (AS)** – A program of instruction with courses to prepare students for entry into employment or college transfer. These courses are more likely transferrable to a baccalaureate program than the AAS.

**College Credit** – The type of credit assigned to courses that are part of an organized and specified college degree or program.

**Credit Hour** – The number of contact hours for a course.

**Dual Enrollment** – Enrollment in two institutions at the same time, such as a college and high school, which allows students to earn both high school and college credit simultaneously.

**Duplicated Headcount** – A headcount measure by which students may be counted in more than one category. This measure usually describes the number of seats taken across multiple courses.

**First Time in College (FTIC)** – A student attending college for the first time with no prior credit toward a degree or formal award.

**Full-time equivalency (FTE)** – A measure to describe various cohorts of students based on the number of student credit hours generated. FTE is computed by dividing the total number of credit or clock hours by 30.

**Full-time Student** – A student who is registered for 12 or more credit hours in the fall and spring semesters or four or more credit hours in the summer semester.

**General Education Development (GED)Test** – A measure designed to provide an opportunity for adults who have not graduated from high school to earn a State of Florida High School diploma by measuring the major academic skills and knowledge associated with a high school program of study.

**Part-time Student** – A student who is registered for less than 12 credit hours in the fall and spring terms or fewer than four credit hours in the summer term.

**Postsecondary Adult Vocational Program (PSAV)** – Job preparatory programs through which a student may receive a vocational certificate upon completion of instruction.

**Postsecondary Vocational (PSV)** – Vocational education for students who have left or completed high school and who are enrolled in an organized program of study for which credit is given toward an associate degree.

**Reporting Year** – The summer, fall, and spring terms of overlapping calendar years. For example, summer 2006, fall 2007, and spring 2007 comprise the 2006-2007 reporting year. This differs from the academic year, which begins with fall and ends with summer.

**Returning Students** – Students enrolled for the current term who were also enrolled in a prior term at the College.

**Unduplicated Headcount** – A headcount measure by which students are counted in only one category.

**Vocational Certificate** – The award for satisfactory completion of a program of study designed to prepare students for entry into an occupation.

**Workforce Education Program** – Training and/or retraining for adults who are out of school and already in the workforce.