

Small College. Big Possibilities.

NFCC



NORTH FLORIDA COMMUNITY COLLEGE
FACT BOOK 2009-2010

NFCC

Small College. Big Possibilities.

Our mission is to provide innovative solutions and quality support services to help members of our College community effectively achieve their goals. The 2009-2010 NFCC Fact Book provides information about North Florida Community College and includes student, financial, and personnel data. We have made every effort to ensure timely and accurate information. We hope you will use this publication on a continual basis. We welcome feedback and suggestions, and our measure of success is the degree to which people find this publication informative and useful.



Table of Contents

Enrollment

Student Totals	5
By Degree	6
By County	8
By Gender.....	12
By Age	13
By Race	14
By Time of Day	17
Instructor/Student Ratio.....	17

Student Success

Degrees Awarded	19
Student Transfer Data	20
Grade Distribution	21

Distance Learning

Total Courses and Students	23
Student Demographics	24

Dual Enrollment

Student Information	26
---------------------------	----

Financial Aid

Total Distribution	30
Awards by County	31

Other Information

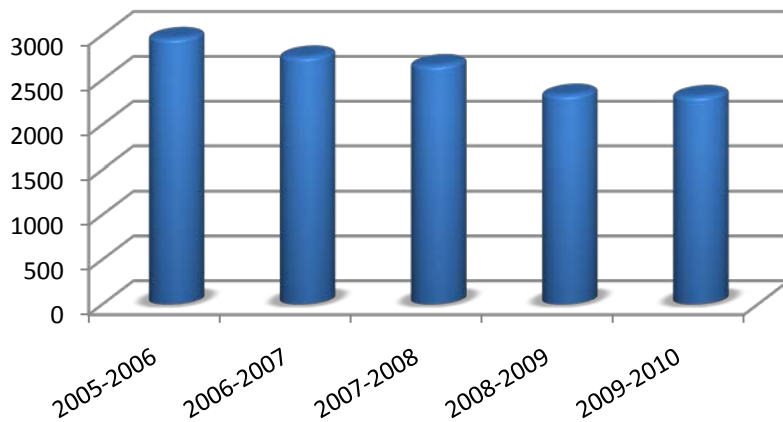
NFCC Library	26
NFCC Foundation	27
Personnel	29
Finances	30
Glossary of Terms	35



Section 1: Enrollment

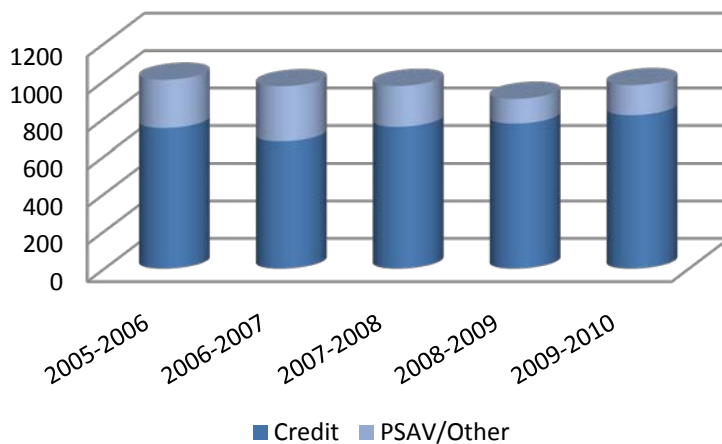
Total Student Headcount (2005-2010)

2005-2006	2006-2007	2007-2008	2008-2009	2009-2010
3017	2784	2665	2343	2317



Total Student FTE (2004-2009)

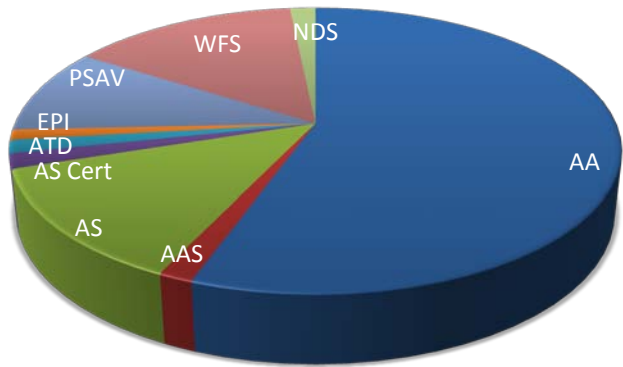
	2005-2006	2006-2007	2007-2008	2008-2009	2009-2010
Credit	748	677	754	771	816
PSAV/Other	257	293	218	132	160
Total	1005	970	972	903	976



Enrollment

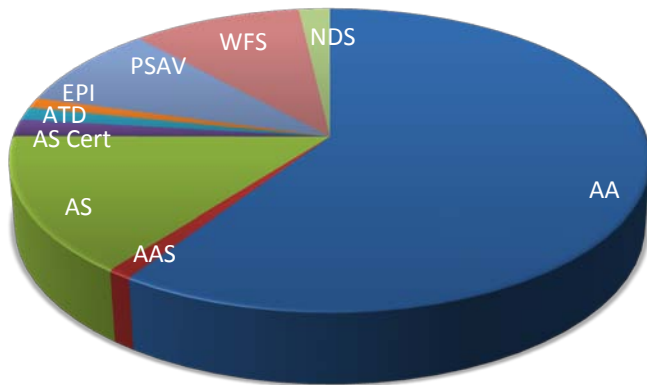
Enrollment by Program (2009-2010)

Fall 2009



Program:		
AA	585	56%
AAS	24	2%
AS	199	13%
AS Cert	26	2%
ATD	23	1%
EPI	18	1%
PSAV	150	10%
WFS	222	14%
NDS	25	2%
Total	1545	

Spring 2010

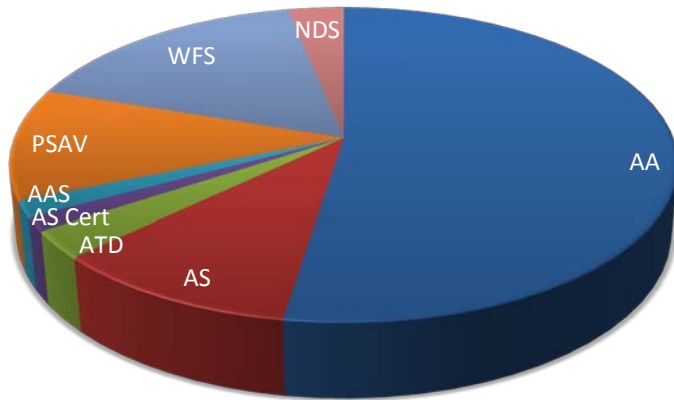


Program		
AA	814	59%
AAS	15	1%
AS	200	15%
AS Cert	25	2%
ATD	19	1%
EPI	15	1%
PSAV	122	9%
WFS	136	10%
NDS	25	2%
Total	1371	

Enrollment

Enrollment by Program (2009-2010)

Summer 2010



Program		
AA	448	52%
AS	89	10%
AS Cert	24	3%
AAS	12	1%
ATD	14	2%
PSAV	98	11%
WFS	142	17%
NDS	27	3%
Total	854	

Legend of programs:

AA: Associates in Arts

AS: Associates in Science

AAS: Associates in Applied Science

ABE / GED: Adult Basic Education / General Education Diploma

EPI: Educator Preparation Institute

PSAV: Post-Secondary Adult Vocational Certificate

WFS: Workforce / Supplemental

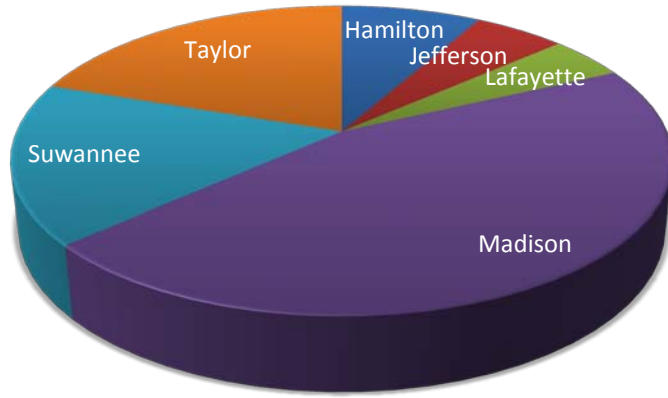
NDS: Non-Degree Seeking

Enrollment

County Enrollment by Term (2009-2010)

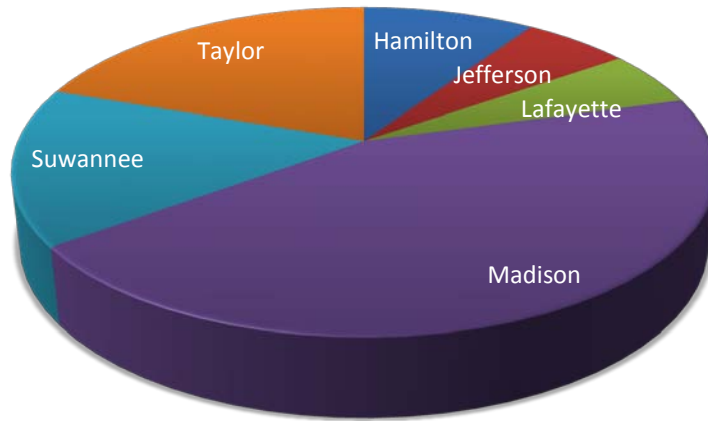
Fall 2009

Hamilton	123	8%
Jefferson	77	5%
Lafayette	94	6%
Madison	620	40%
Suwannee	246	16%
Taylor	277	18%
Other FL	92	6%
Out of State	16	1%
Total	1545	



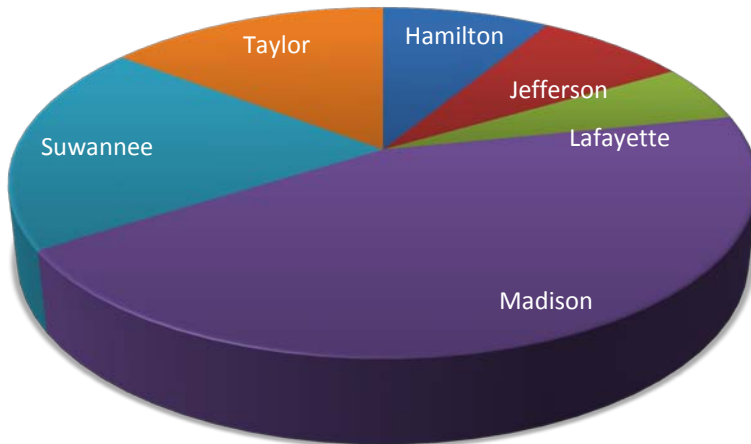
Spring 2010

Hamilton	120	9%
Jefferson	74	5%
Lafayette	69	5%
Madison	562	41%
Suwannee	197	15%
Taylor	250	18%
Other FL	86	6%
Out of State	13	1%
Total	1371	



Summer 2010

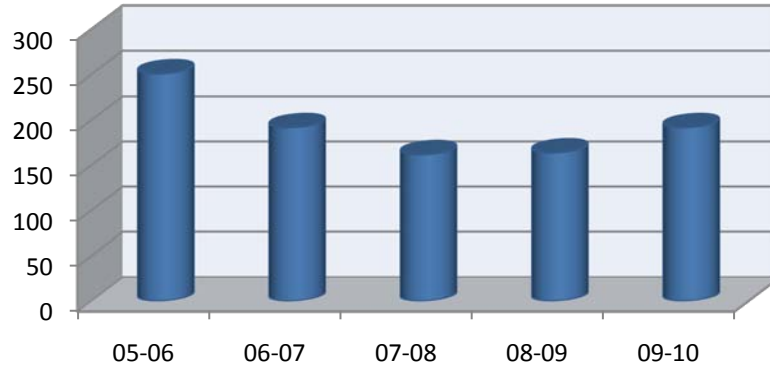
Hamilton	66	8%
Jefferson	60	7%
Lafayette	40	5%
Madison	337	39%
Suwannee	148	17%
Taylor	111	13%
Other FL	74	9%
Out of State	18	2%
Total	854	



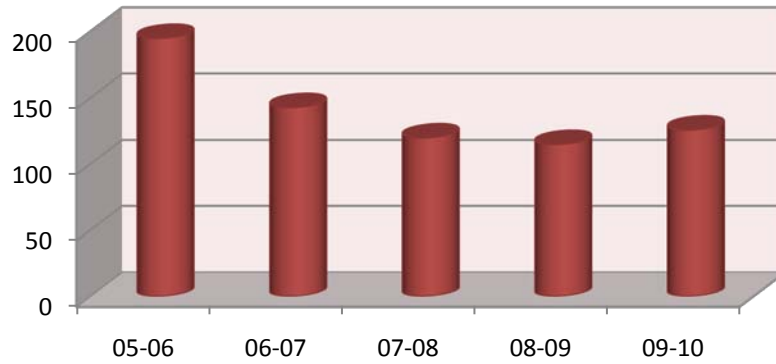
Enrollment

5 Year County Enrollment (2005-2010)

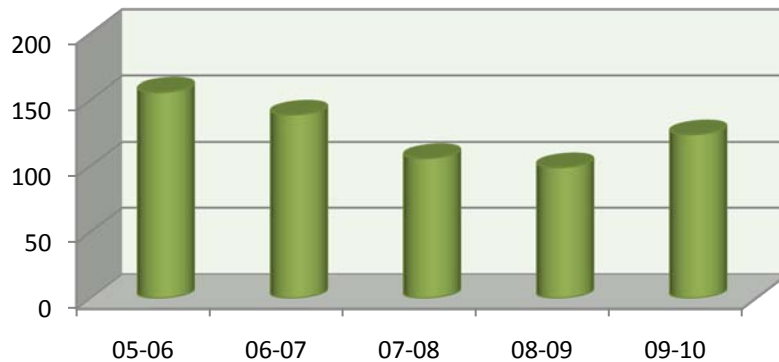
Hamilton	
05-06	251
06-07	192
07-08	162
08-09	164
09-10	192



Jefferson	
05-06	195
06-07	143
07-08	120
08-09	115
09-10	126



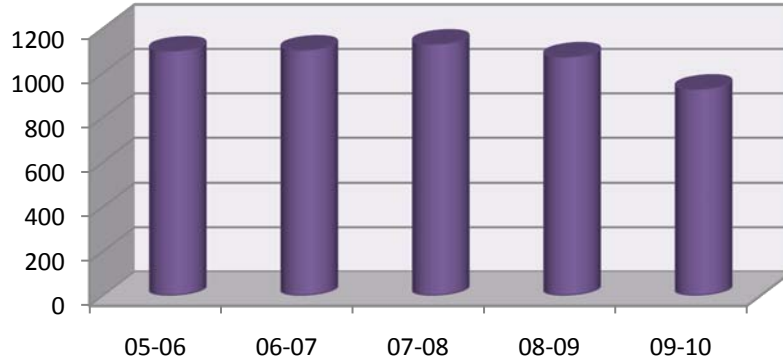
Lafayette	
05-06	156
06-07	139
07-08	106
08-09	99
09-10	124



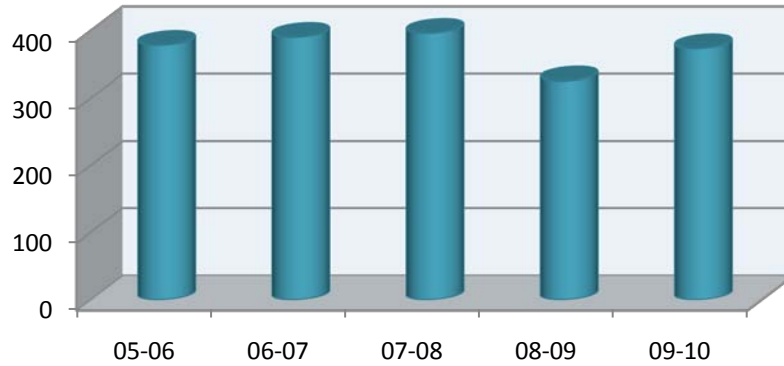
Enrollment

5 Year County Enrollment (2005-2010)

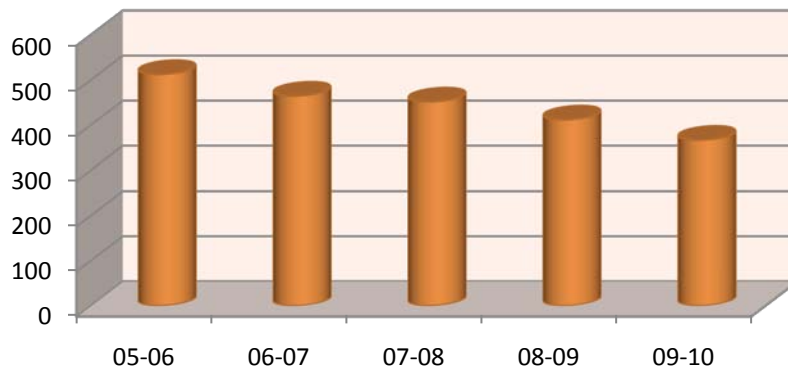
Madison	
05-06	1100
06-07	1104
07-08	1131
08-09	1073
09-10	928



Suwannee	
05-06	379
06-07	391
07-08	397
08-09	326
09-10	375



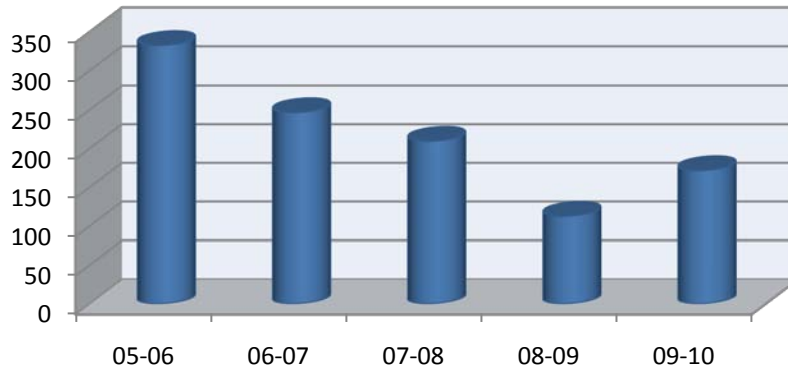
Taylor	
05-06	513
06-07	465
07-08	452
08-09	412
09-10	367



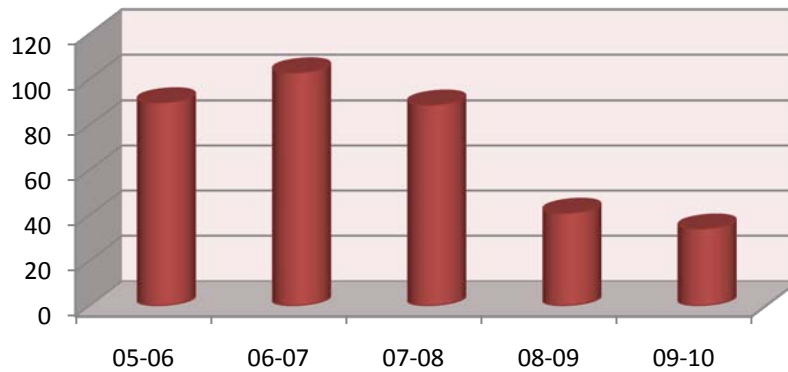
Enrollment

5 Year County Enrollment (2005-2010)

Other Florida	
05-06	333
06-07	247
07-08	210
08-09	113
09-10	172



Out of State	
05-06	90
06-07	103
07-08	89
08-09	41
09-10	34



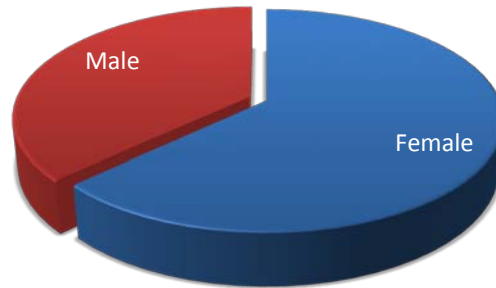
District High School Graduates Enrolled (2004-2009)

	2004-05	2005-06	2006-07	2007-08	2008-09
District Grads Enrolled in NFCC	21.3%	26.5%	26.0%	25.3%	25.2%
FL Grads in their District CC	31.6%	31.2%	31.6%	33.2%	34.6%

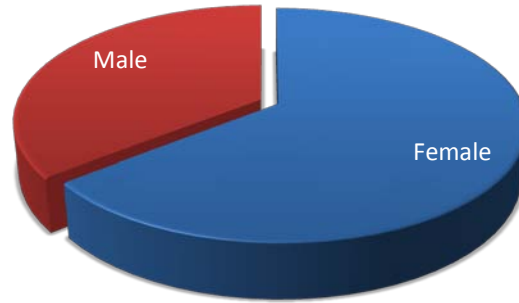
Enrollment

Enrollment by Gender (2009-2010)

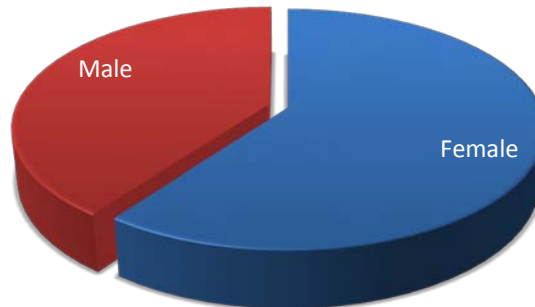
Fall 2009		
Female	965	62%
Male	580	38%



Spring 2010		
Female	859	63%
Male	512	37%



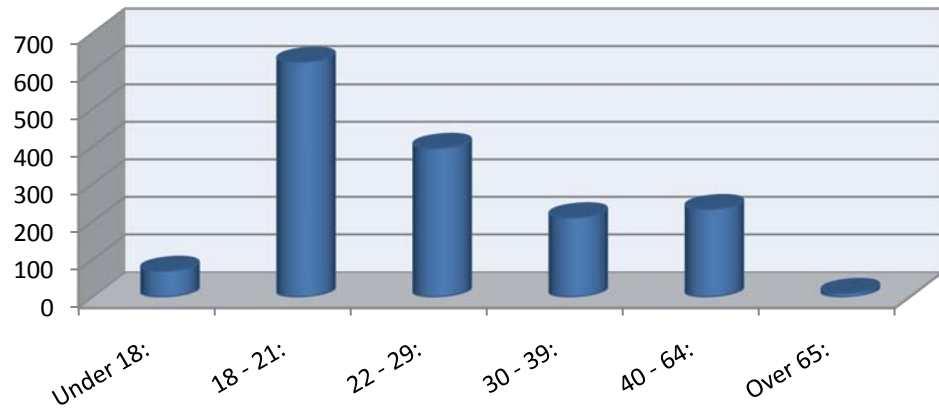
Summer 2010		
Female	544	64%
Male	310	36%



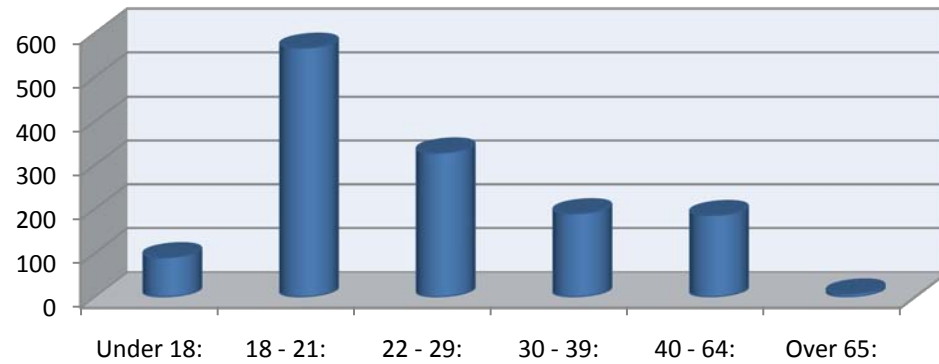
Enrollment

Enrollment by Age (2009-2010)

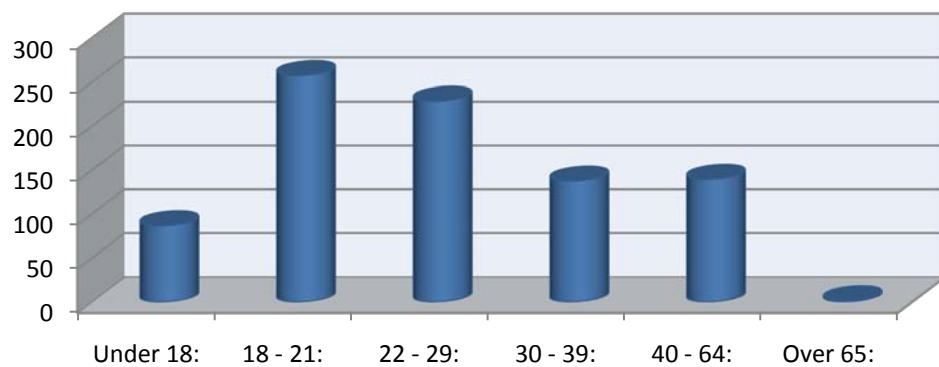
Fall 2009	
Under 18:	70
18 - 21:	624
22 - 29:	396
30 - 39:	211
40 - 64:	233
Over 65:	11
Total:	1545
Average Age:	27



Spring 2010	
Under 18:	91
18 - 21:	567
22 - 29:	329
30 - 39:	190
40 - 64:	186
Over 65:	8
Total:	1371
Average Age:	26



Summer 2010	
Under 18:	87
18 - 21:	258
22 - 29:	229
30 - 39:	138
40 - 64:	140
Over 65:	2
Total:	854
Average Age:	30

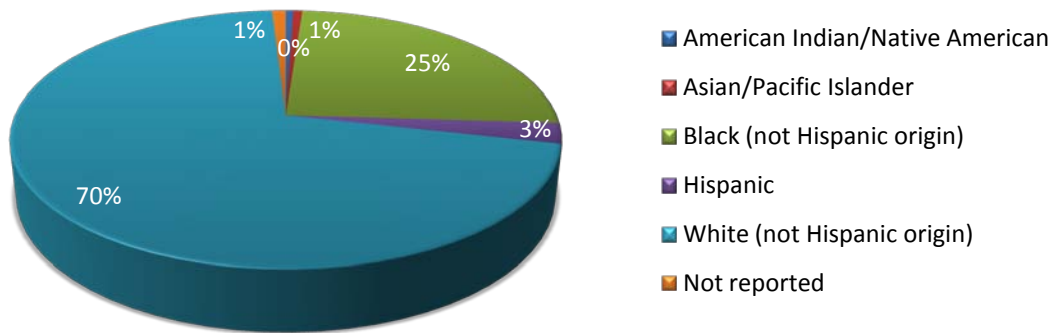


Enrollment

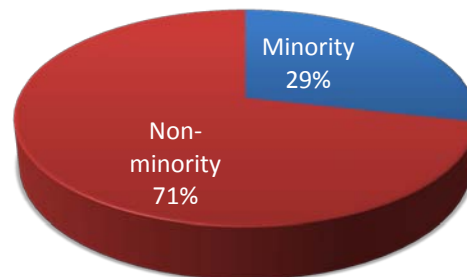
Enrollment by Ethnicity (2009-2010)

FALL 2009

	#	%
American Indian/Native American:	8	>1%
Asian/Pacific Islander:	10	1%
Black (not Hispanic origin):	383	25%
Hispanic:	40	3%
White (not Hispanic origin):	1089	70%
Not reported:	15	1%
Total:	1545	



	#
Minority	456
Non-minority	1089

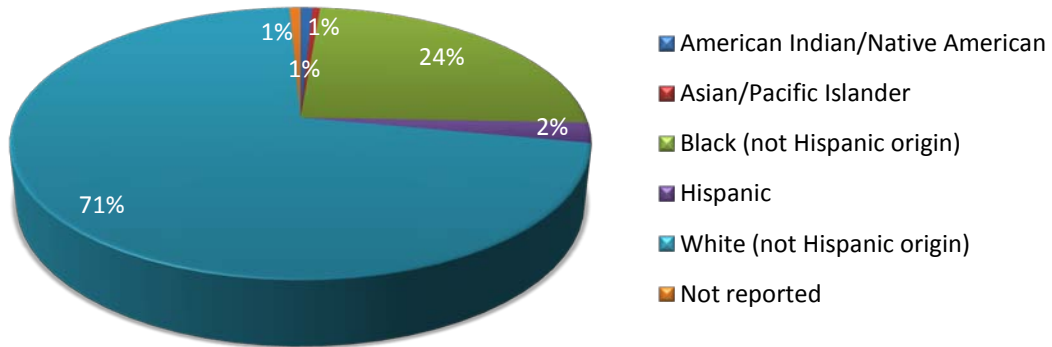


Enrollment

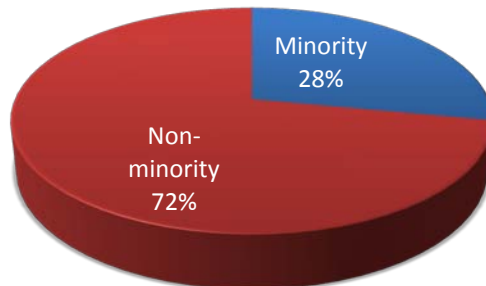
Enrollment by Ethnicity (2009-2010)

SPRING 2010

	#	%
American Indian/Native American	11	1%
Asian/Pacific Islander	7	1%
Black (not Hispanic origin)	333	24%
Hispanic	33	2%
White (not Hispanic origin)	977	71%
Not reported	10	1%
Total	1371	



	#
Minority	384
Non-minority	987

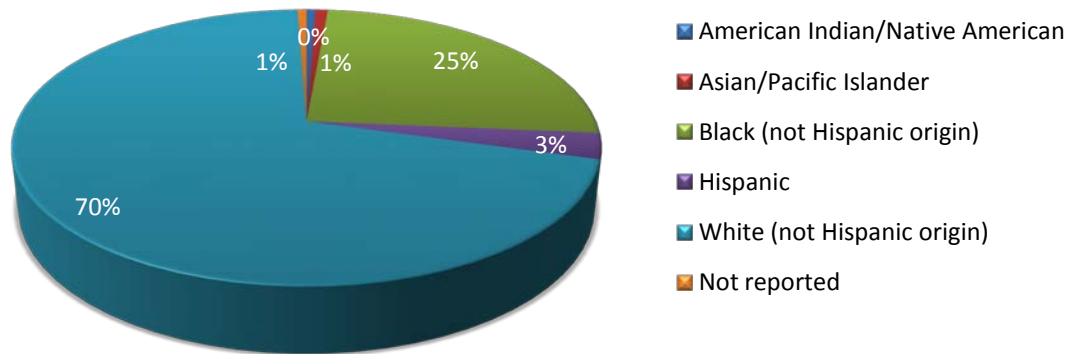


Enrollment

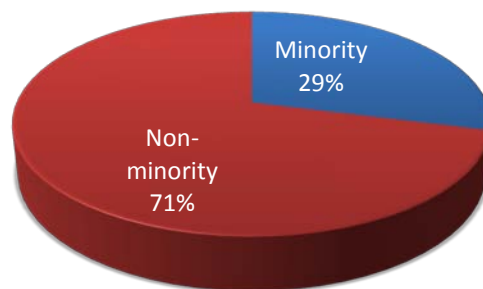
Enrollment by Ethnicity (2009-2010)

SUMMER 2010

	#	%
American Indian/Native American	5	1%
Asian/Pacific Islander	7	1%
Black (not Hispanic origin)	213	25%
Hispanic	26	3%
White (not Hispanic origin)	598	70%
Not reported	5	1%
Total	854	



	#
Minority	246
Non-minority	608



Enrollment

Student Schedule by Day & Time (2009-2010)

FALL 2009	Monday	Tuesday	Wednesday	Thursday	Friday	Saturday
8:00 - 9:15 a.m.	373	491	362	484	133	55
9:30 - 10:45 a.m.	175	261	174	409	27	0
11:00 - 12:15 p.m.	285	319	285	319	80	21
12:30 - 1:45 p.m.	280	340	286	332	58	5
2:00 - 4:00 p.m.	199	145	199	150	21	0
5:00 p.m. or later	284	384	302	247	0	0

SPRING 2010	Monday	Tuesday	Wednesday	Thursday	Friday	Saturday
8:00 - 9:15 a.m.	291	398	308	398	106	70
9:30 - 10:45 a.m.	207	250	207	218	12	0
11:00 - 12:15 p.m.	220	301	220	301	50	0
12:30 - 1:45 p.m.	242	471	268	261	32	15
2:00 - 4:00 p.m.	139	221	158	234	0	12
5:00 p.m. or later	164	298	225	172	0	1

Instructor to Student Ratio (2009-2010)

	Students	Courses	Instructors	Ratio
05-06	3017	1003	147	21
06-07	2784	976	133	21
07-08	2665	876	112	24
08-09	2343	721	104	23
09-10	2317	634	105	22

Average Class Size (2009-2010)

	Credit	PSAV
Fall 2009	24	19
Spring 2010	21	16
Summer 2010	18	13



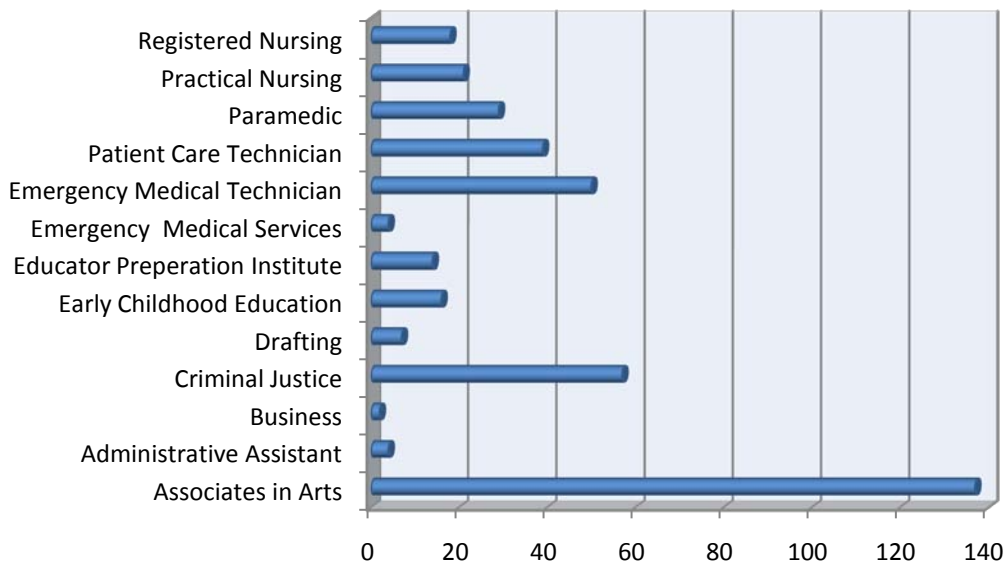
Section 2: Student Success

Degrees Awarded (2005–2010)

	05-06	06-07	07-08	08-09	09-10
Associates in Arts	141	139	114	160	137
Associates in Science	1	0	21	19	22
Associates in Applied Science	5	8	6	5	4
ATD	19	13	27	21	50
Certificates	145	126	128	106	171
Educator Preparation	24	25	23	15	14
Total	335	311	319	326	398

Graduates by Program (2009-2010)

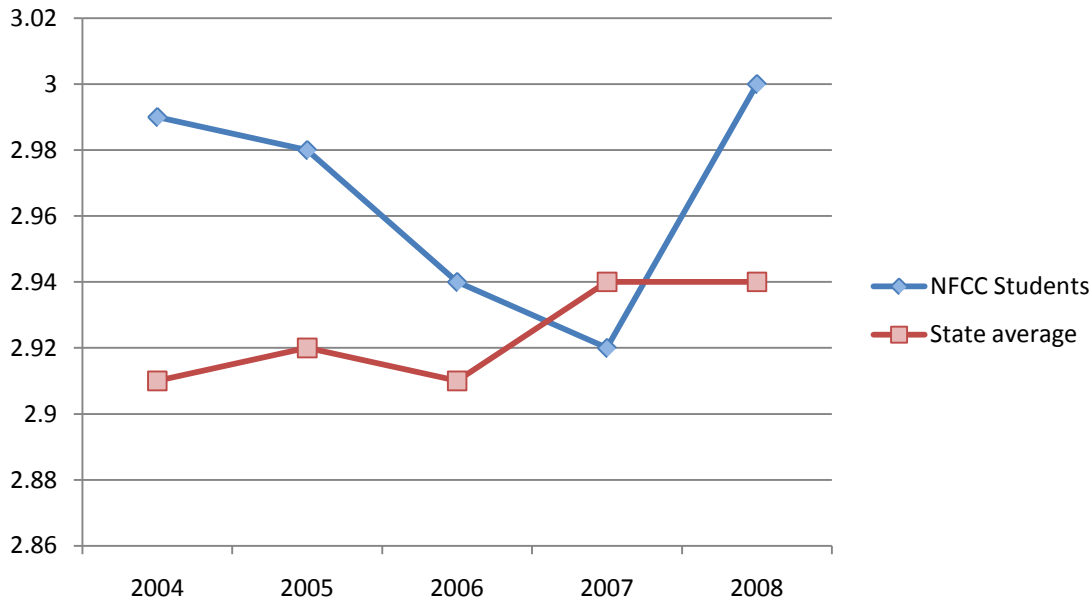
Associates in Arts	137	Emergency Medical Services	4
Administrative Assistant	4	Emergency Medical Tech	50
Business	2	Paramedic	29
Criminal Justice	57	Patient Care Technician	39
Drafting	7	Practical Nursing	21
Early Childhood Education (AS & Cert.)	16	Registered Nursing	18
Educator Preparation Institute	14	Total	398



Student Success

NFCC Transfer Success (2003-2008)

Mean cumulative grade-point averages for NFCC graduates who transfer to Florida public universities



	2004	2005	2006	2007	2008
NFCC Students	2.99	2.98	2.94	2.92	3.00
State average	2.91	2.92	1.92	2.94	2.94

Articulation Report Table 12

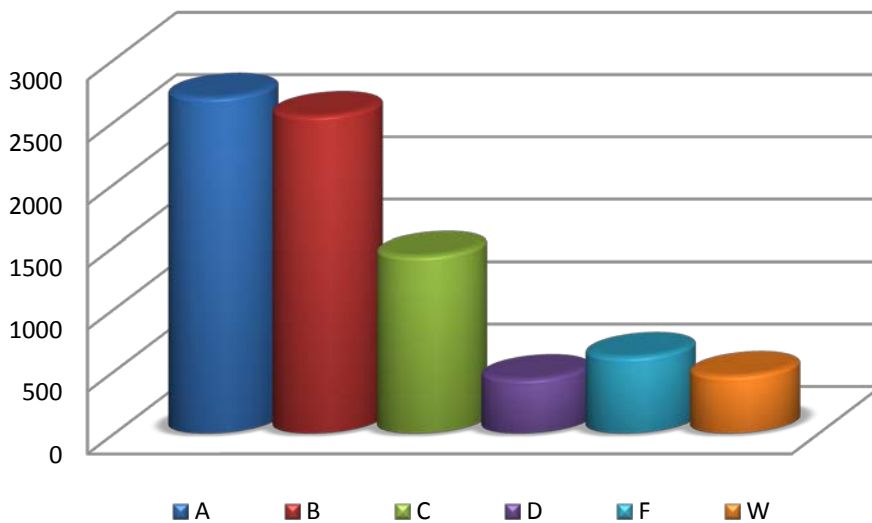
Top 5 Universities receiving NFCC Graduates

University	Avg. GPA
FSU – Tallahassee	2.90
FAMU – Tallahassee	2.86
UF – Gainesville	3.01
UCF – Orlando	3.26
UNF – Jacksonville	3.16

Student Success

Grade Distribution in all NFCC Courses (2009-2010)

A	B	C	D	F	W	Total
3314	3018	1433	406	576	680	9427



Grade Distribution in NFCC College Prep Courses (2009-2010)

A	B	C	D	F	W	Total
110	195	109	63	22	118	617

Grade Distribution in NFCC PSAV Courses (2009-2010)

A	B	C	D	F	W	Total
755	493	118	6	29	31	1432

Grade Distribution in NFCC Online Courses (2009-2010)

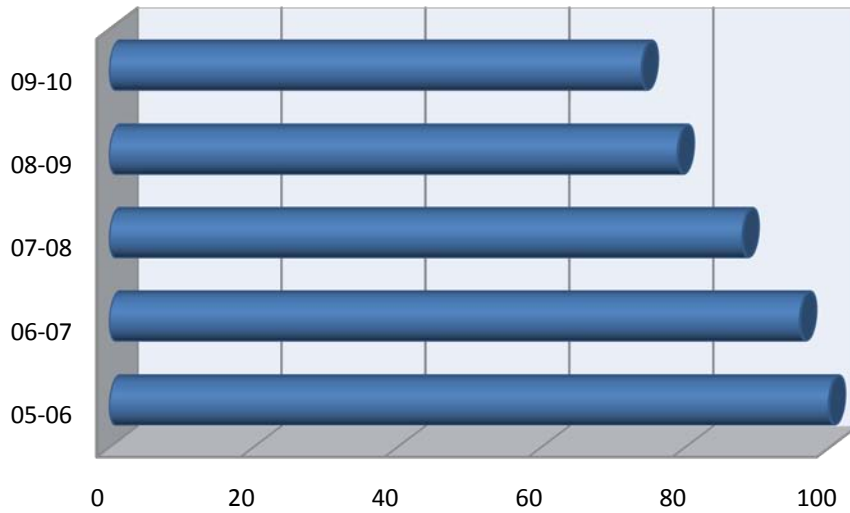
A	B	C	D	F	W	Total
452	428	239	80	158	146	1503



Section 3: Distance Learning

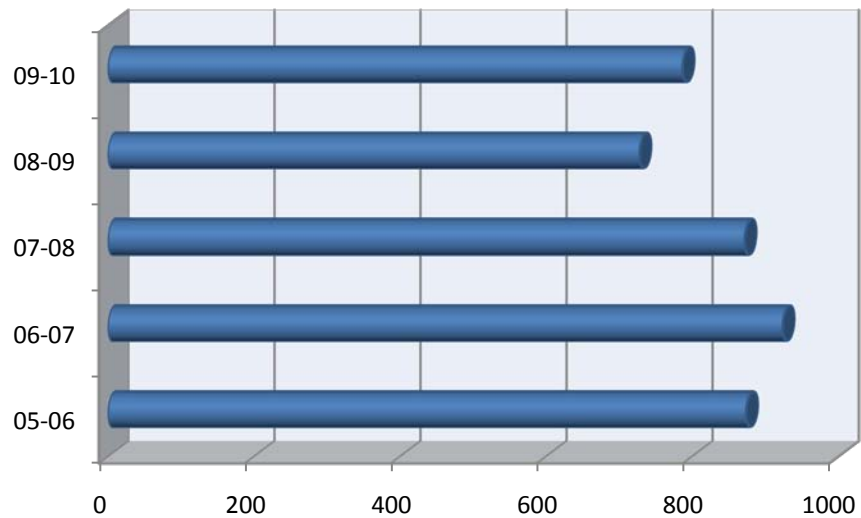
Number of Online Courses (2005-2010)

Year	# of courses
05-06	100
06-07	96
07-08	88
08-09	79
09-10	74



Number of Online Students (2005-2010)

Year	# of students
05-06	874
06-07	924
07-08	872
08-09	728
09-10	787

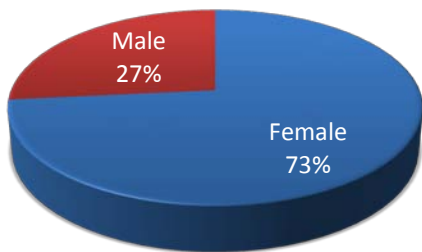


Distance Learning

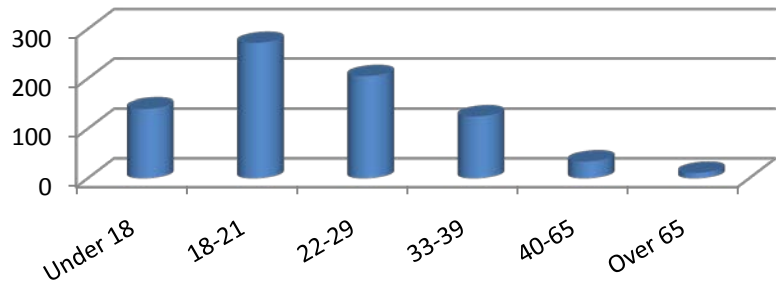
Online Student Demographics (2009-2010)

Gender

Female	578
Male	209



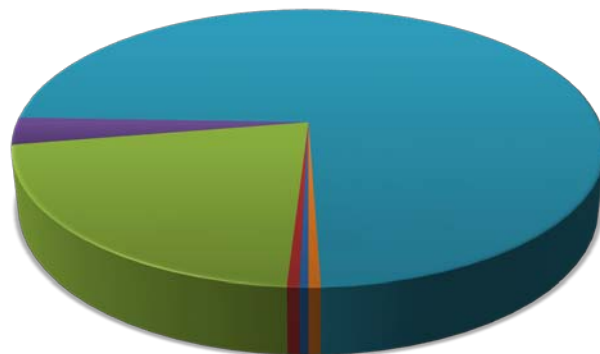
Age



Under 18	19-21	22-30	31-45	46-55	Over 55
140	272	205	125	34	11

Ethnicity

American India/Alaskan Native:	5
Asian:	6
Black:	165
Hispanic:	28
White:	581
Not Reported:	2



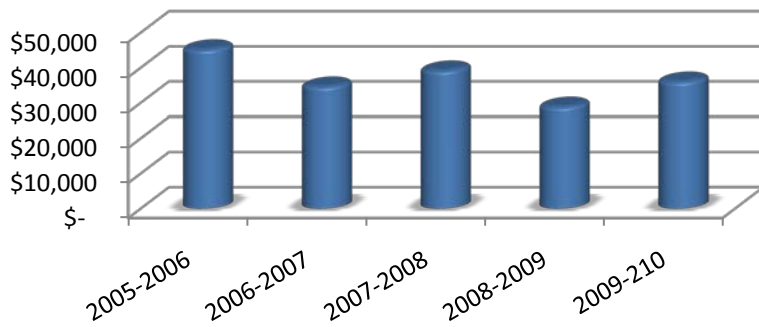
- American India/Alaskan Native
- Asian
- Black
- Hispanic
- White
- Not Reported



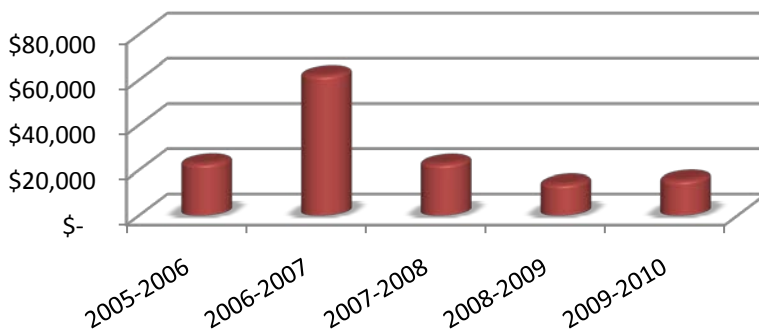
Section 4: Dual Enrollment

Number and cost of Dual Enrolled Student (2004-2009)

Hamilton					
	# of Students	Credit hours	County Value	Total NFCC DE Value	% Total DE Value
2005-2006	39	729	\$ 45,198	\$ 215,012	21%
2006-2007	30	526	\$ 34,606	\$ 241,481	14%
2007-2008	28	595	\$ 39,151	\$ 210,296	19%
2008-2009	29	395	\$ 28,835	\$ 230,899	12%
2009-2010	44	438	\$ 36,004	\$ 222,105	16%
5 Yr. Total	170	2683	\$ 183,794	\$ 1,119,793	16%



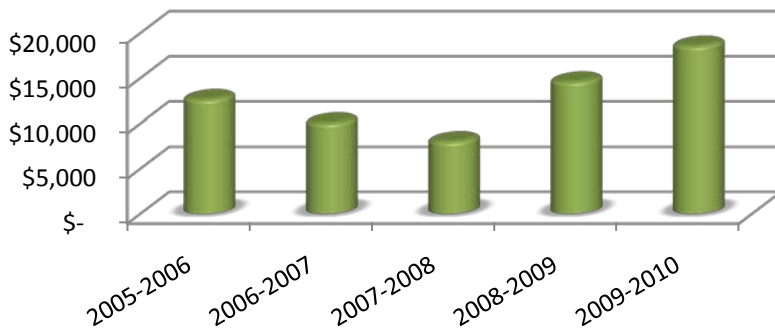
Jefferson					
	# of Students	Credit hours	County Value	Total NFCC DE Value	% Total DE Value
2005-2006	32	369	\$ 22,878	\$ 215,012	11%
2006-2007	49	944	\$ 62,115	\$ 241,481	26%
2007-2008	26	364	\$ 22,766	\$ 210,296	11%
2008-2009	16	192	\$ 14,016	\$ 230,899	6%
2009-2010	20	191	\$ 15,700	\$ 222,105	7%
5 Yr. Total	143	2060	\$ 137,475	\$ 897,688	15%



Dual Enrollment

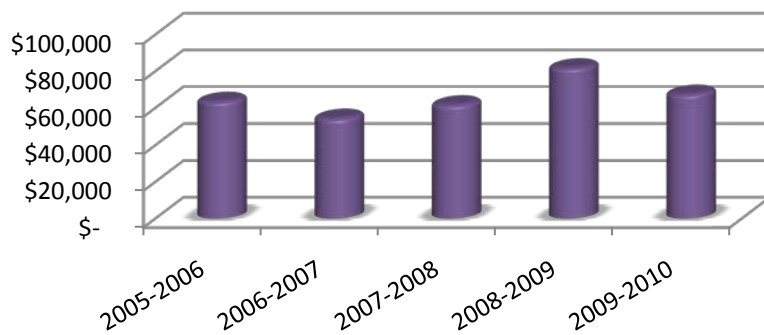
Lafayette

	# of Students	Credit hours	County Value	Total NFCC DE Value	% Total DE Value
2005-2006	19	204	\$ 12,648	\$ 215,012	6%
2006-2007	24	153	\$ 10,067	\$ 241,481	4%
2007-2008	13	122	\$ 8,027	\$ 210,296	4%
2008-2009	19	200	\$ 14,600	\$ 230,899	6%
2009-2010	27	226	\$ 18,577	\$ 222,105	8%
5 Yr. Total	102	905	\$ 63,919	\$ 897,688	7%



Madison

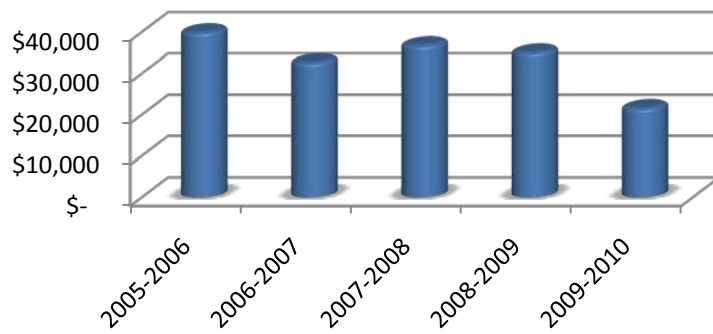
	# of Students	Credit hours	County Value	Total NFCC DE Value	% Total DE Value
2005-2006	85	1020	\$ 63,240	\$ 215,012	29%
2006-2007	80	821	\$ 54,022	\$ 241,481	22%
2007-2008	83	932	\$ 61,325	\$ 210,296	29%
2008-2009	85	1117	\$ 81,541	\$ 230,899	35%
2009-2010	73	817	\$ 67,157	\$ 222,105	30%
5 Yr. Total	406	4707	\$ 327,285	\$ 897,688	36%



Dual Enrollment

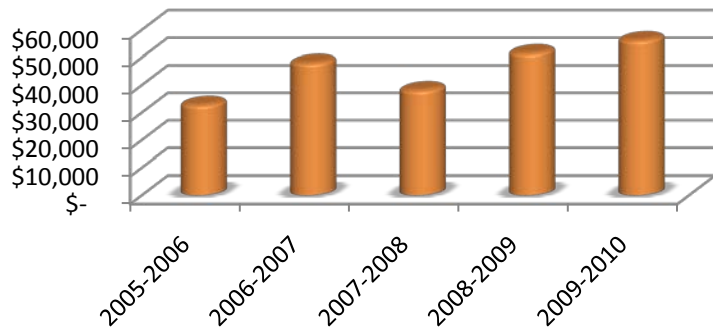
Suwannee

	# of Students	Credit hours	County Value	Total NFCC DE Value	% Total DE Value
2005-2006	63	643	\$ 39,866	\$ 215,012	19%
2006-2007	52	496	\$ 32,637	\$ 241,481	14%
2007-2008	51	558	\$ 36,716	\$ 210,296	17%
2008-2009	44	479	\$ 34,967	\$ 230,899	15%
2009-2010	32	262	\$ 21,536	\$ 222,105	10%
5 Yr. Total	242	2438	\$ 165,722	\$ 897,688	18%



Taylor

	# of Students	Credit hours	County Value	Total NFCC DE Value	% Total DE Value
2005-2006	52	529	\$ 32,794	\$ 215,012	15%
2006-2007	55	730	\$ 48,034	\$ 241,481	20%
2007-2008	52	580	\$ 38,164	\$ 210,296	18%
2008-2009	56	706	\$ 51,538	\$ 230,899	22%
2009-2010	69	684	\$ 56,225	\$ 222,105	25%
5 Yr. Total	284	3229	\$ 226,755	\$ 897,688	25%

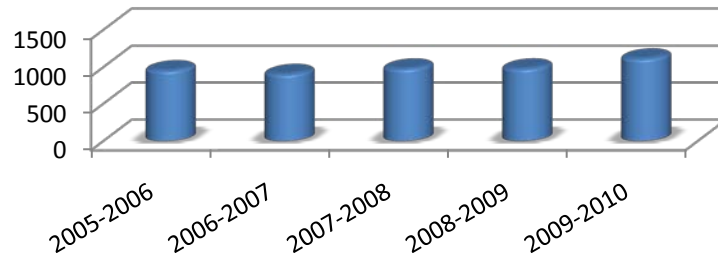




Section 5: Financial Aid

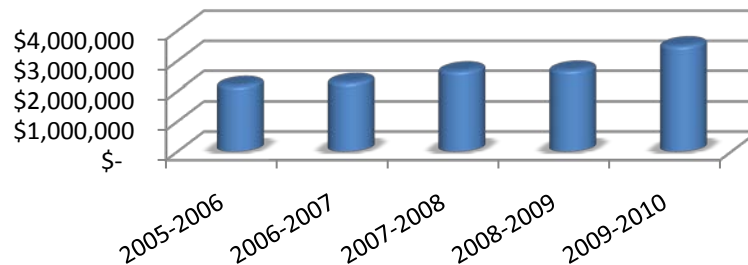
Number of Financial Aid Awards (2005-2010)

2005-2006	955
2006-2007	905
2007-2008	979
2008-2009	980
2009-2010	1117



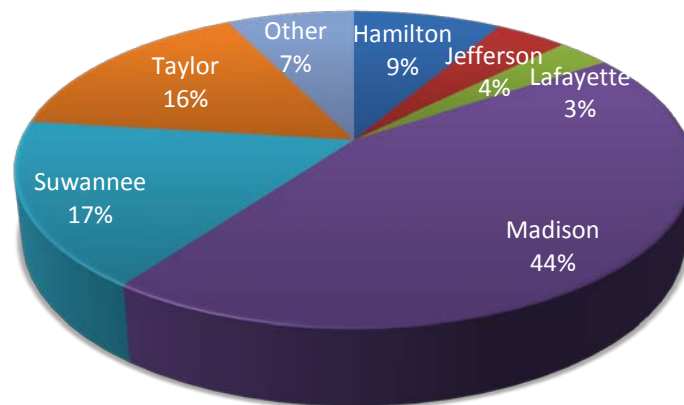
Dollar Amount of Financial Aid Awards (2005-2010)

2005-2006	\$ 2,184,731
2006-2007	\$ 2,290,129
2007-2008	\$ 2,664,624
2008-2009	\$ 2,691,770
2009-2010	\$ 3,501,192



Distribution by County (2009-2010)

Hamilton	\$ 271,452
Jefferson	\$ 175,920
Lafayette	\$ 149,573
Madison	\$ 1,666,185
Suwannee	\$ 515,958
Taylor	\$ 532,456
Other	\$ 189,648

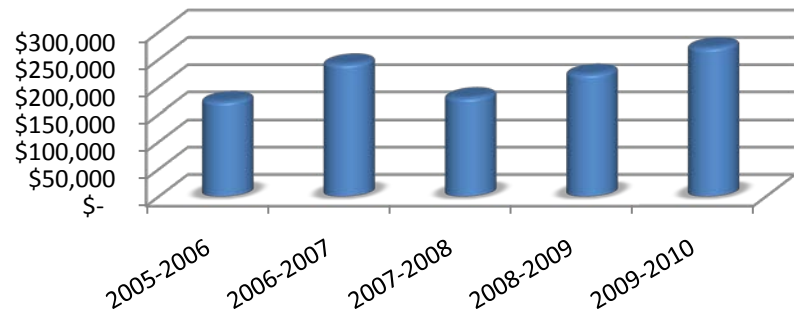


Financial Aid

Awards by County (In-District Only)

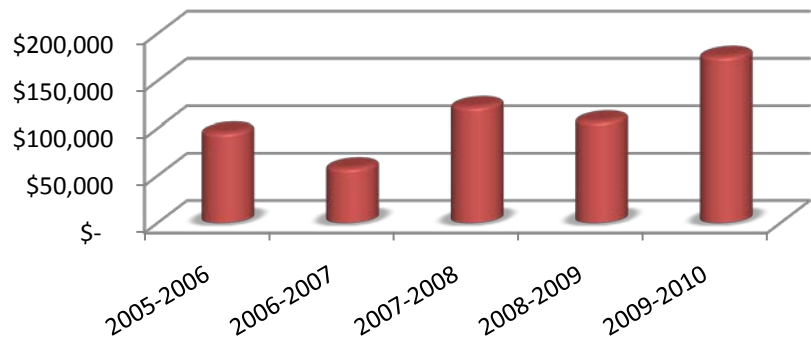
Hamilton

	# of Students	Awards Paid
2005-2006	75	\$ 173,138
2006-2007	74	\$ 241,536
2007-2008	66	\$ 179,772
2008-2009	77	\$ 223,123
2009-2010	91	\$ 271,452



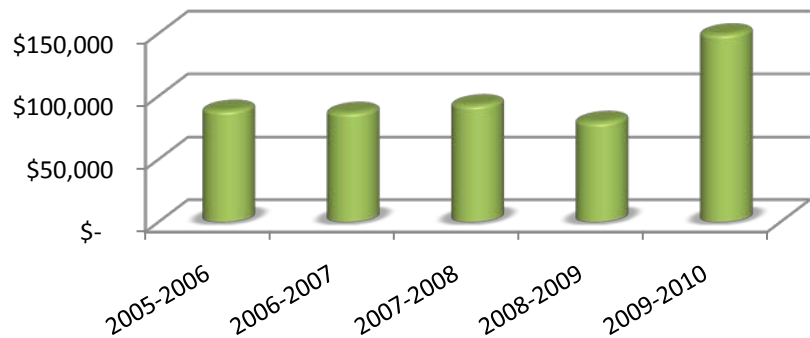
Jefferson

	# of Students	Awards Paid
2005-2006	53	\$ 95,896
2006-2007	35	\$ 58,354
2007-2008	49	\$ 122,667
2008-2009	49	\$ 107,554
2009-2010	60	\$ 175,920



Lafayette

	# of Students	Awards Paid
2005-2006	38	\$ 88,644
2006-2007	41	\$ 86,913
2007-2008	42	\$ 93,005
2008-2009	32	\$ 79,692
2009-2010	46	\$ 149,573

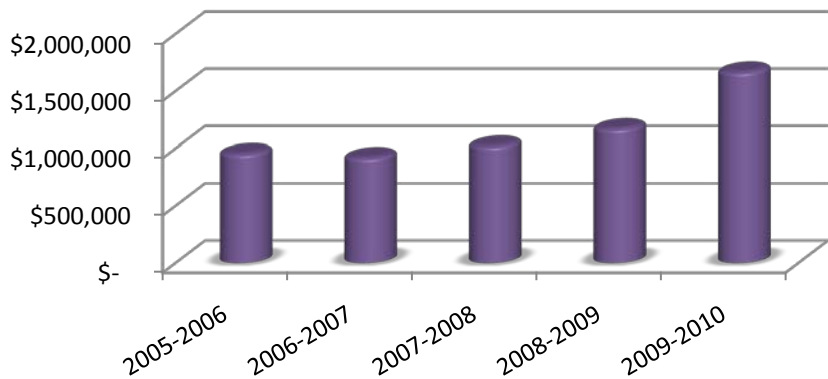


Financial Aid

Awards by County

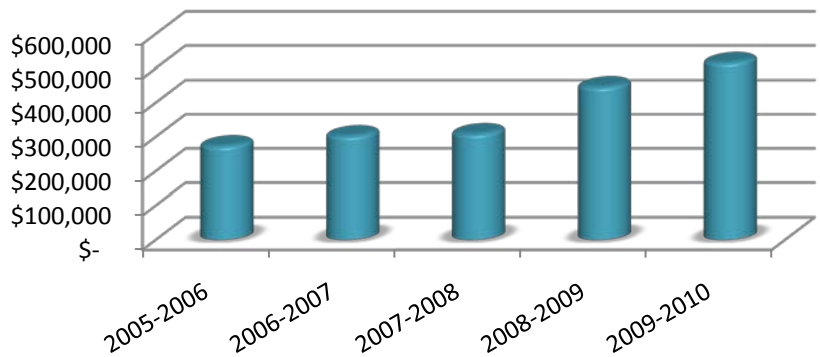
Madison

	# of Students	Awards Paid
2005-2006	412	\$ 953,914
2006-2007	388	\$ 919,160
2007-2008	395	\$ 1,021,526
2008-2009	428	\$ 1,171,335
2009-2010	516	\$ 1,666,185



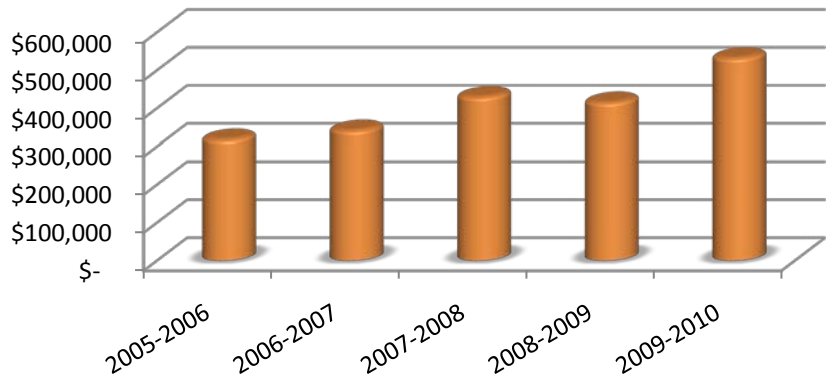
Suwannee

	# of Students	Awards Paid
2005-2006	133	\$ 273,655
2006-2007	129	\$ 302,995
2007-2008	129	\$ 309,210
2008-2009	154	\$ 446,688
2009-2010	164	\$ 515,958



Taylor

	# of Students	Awards Paid
2005-2006	163	\$ 317,984
2006-2007	156	\$ 341,690
2007-2008	179	\$ 429,934
2008-2009	166	\$ 415,456
2009-2010	169	\$ 532,456

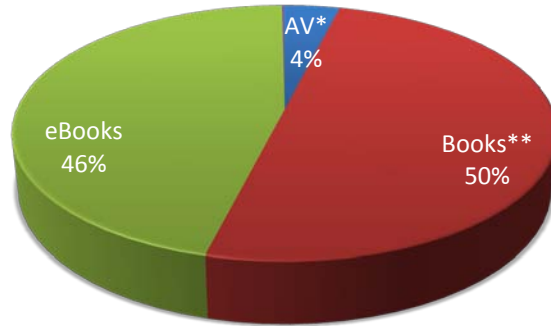




Section 6: NFCC Library

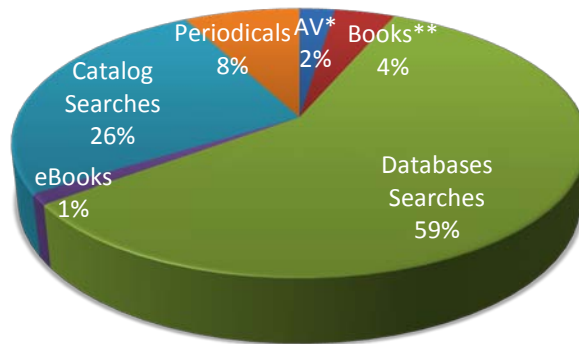
2009-2010 Collections

Audio Visuals*	2,465
Books**	32,955
eBooks	303,40
Electronic Databases	109
Periodicals	24



2009-2010 Circulation Statistics

Audio Visuals*	2,292
Books**	3,579
Databases Searches	22,626
eBooks	781
Online Catalog Searches	21,666
Periodicals	7,525



*Audio visuals include audiocassettes, DVDs, CDs, and video tapes

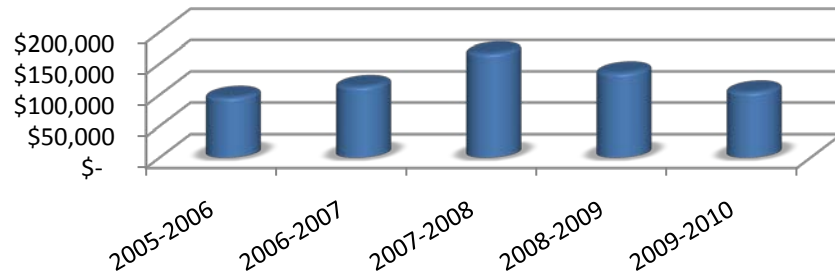
**Books includes titles from circulation and reference collections



Section 7: NFCC Foundation

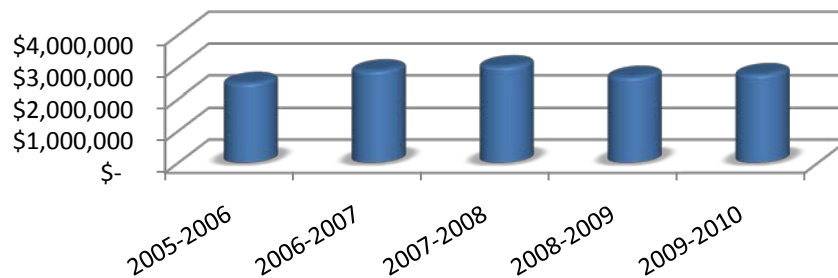
Scholarships Awarded (2005-2010)

2005-2006	2006-2007	2007-2008	2008-2009	2009-2010
\$ 96,184	\$ 113,529	\$ 167,085	\$ 135,448	\$ 104,843



Foundation Assets (2005-2010)

2005-2006	2006-2007	2007-2008	2008-2009	2009-2010
\$ 2,486,030	\$ 2,880,106	\$ 3,008,821	\$ 2,679,205	\$ 2,760,800

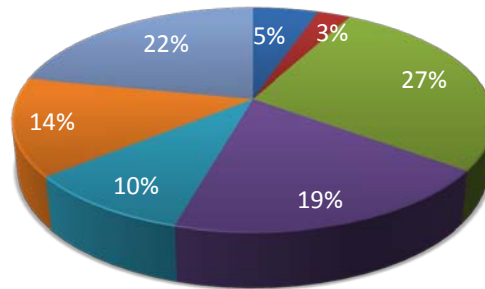




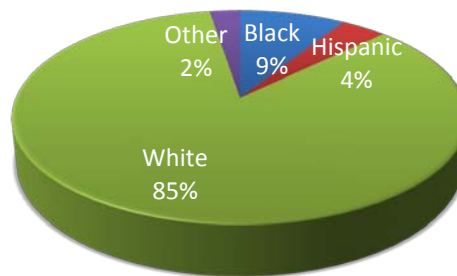
Section 8: Personnel

Full-Time Employees (2009-2010)

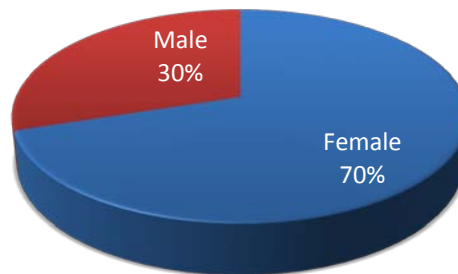
Doctorate	5
Advanced Specialist	3
Masters	29
Bachelors	22
Associates	11
Other	16
No Degree	23



- Doctorate
- Bachelors
- No Degree
- Advanced Specialist
- Associates
- Other
- Masters



	Female	Male
Black	7	3
Hispanic	3	2
White	66	29
Other	2	2

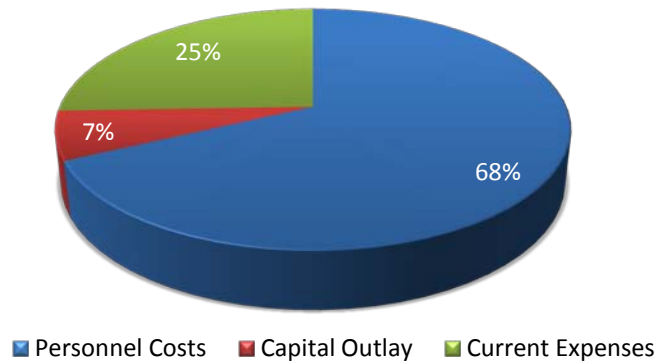




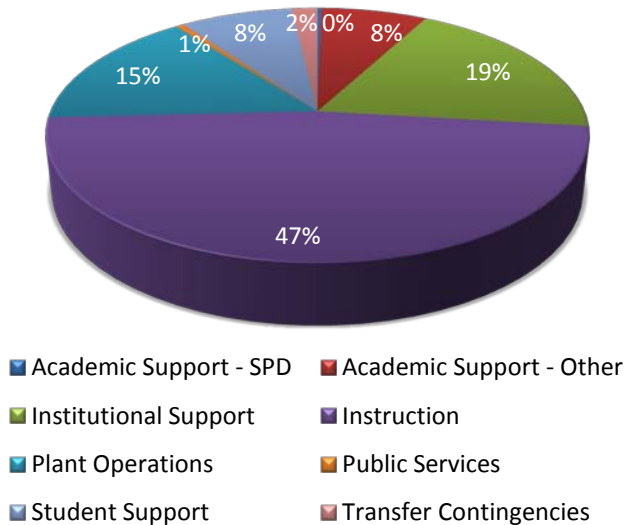
Section 9: Finances

General Fund Budget (2009-2010)

By Object	
Personnel Costs	\$ 5,749,777
Capital Outlay	\$ 553,065
Current Expenses	\$ 2,160,971
Total	\$ 8,463,813



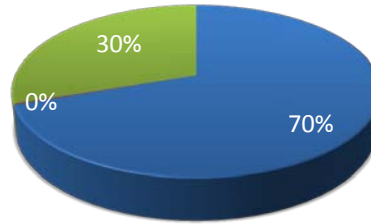
By Organizational Unit	
Academic Support - SPD	\$ 25,000
Academic Support - Other	\$ 637,862
Institutional Support	\$ 1,612,068
Instruction	\$ 4,006,663
Plant Operations	\$ 1,302,706
Public Services	\$ 45,991
Student Support	\$ 676,148
Transfer Contingencies	\$ 157,375
Total	\$ 8,463,813



Finances

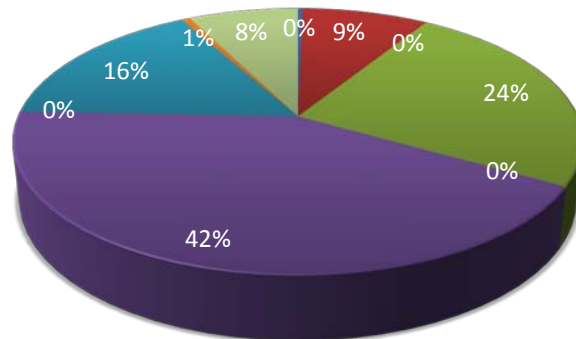
General Fund Expenditures (2009-2010)

By Object	
Personnel Costs	\$ 5,879,466
Capital Outlay	\$ 13,920
Current Expenses	\$ 2,553,749
Total	\$ 8,447,136



■ Personnel Costs ■ Capital Outlay ■ Current Expenses

By Organizational Unit	
Academic Support - SPD	\$ 24,639
Academic Support - Other	\$ 727,148
Institutional Support	\$ 2,059,426
Instruction	\$ 3,575,018
Plant Operations	\$ 1,382,484
Public Services	\$ 48,310
Research	\$ 266
Student Aid	\$ 86
Student Support	\$ 628,248
Transfer Contingencies	\$ 1,511
Total	\$ 8,447,136



■ Academic Support - SPD ■ Academic Support - Other ■ Institutional Support
 ■ Instruction ■ Plant Operations ■ Public Services
 ■ Research ■ Student Aid ■ Student Support
 ■ Transfer Contingencies

Glossary of Terms

Academic Year – The fall, spring, and summer terms of overlapping calendar years. For example, fall 2006, spring 2007, and summer 2007 comprise the 2006-2007 academic year. This differs from the reporting year which begins with summer and ends with spring.

Accreditation – Certification by an official review board that specific requirements have been met. NFCC is accredited by the Southern Association of Colleges and Schools (SACS).

Adult Basic Education (ABE) – Education for adults to help them attain basic or functional literacy skills.

Advanced & Professional (A&P) – A program area with courses designed to provide the first two years of course work leading to an advanced or professional degree (bachelors, masters, etc.). It includes general education and specialized lower-division courses necessary to transfer into a degree program.

Associate in Arts (AA) – A program of instruction that consists of courses offered to freshmen and sophomores. This degree will transfer to the state university system and is awarded when a student completes 60 hours of college credit along with specified performance requirements.

Associate in Applied Science (AAS) – A program of instruction with courses to prepare students for entry into employment. These courses are usually not transferrable to a baccalaureate program.

Associate in Science (AS) – A program of instruction with courses to prepare students for entry into employment or college transfer. These courses are more likely transferrable to a baccalaureate program than the AAS.

College Credit – The type of credit assigned to courses that are part of an organized and specified college degree or program.

Credit Hour – The number of contact hours for a course.

Dual Enrollment – Enrollment in two institutions at the same time, such as a college and high school, which allows students to earn both high school and college credit simultaneously.

Duplicated Headcount – A headcount measure by which students may be counted in more than one category. This measure usually describes the number of seats taken across multiple courses.

First Time in College (FTIC) – A student attending college for the first time with no prior credit toward a degree or formal award.

Full-time equivalency (FTE) – A measure to describe various cohorts of students based on the number of student credit hours generated. FTE is computed by dividing the total number of credit or clock hours by 30.

Full-time Student – A student who is registered for 12 or more credit hours in the fall and spring semesters or four or more credit hours in the summer semester.

General Education Development (GED) Test – A measure designed to provide an opportunity for adults who have not graduated from high school to earn a State of Florida High School diploma by measuring the major academic skills and knowledge associated with a high school program of study.

Part-time Student – A student who is registered for less than 12 credit hours in the fall and spring terms or fewer than four credit hours in the summer term.

Postsecondary Adult Vocational Program (PSAV) – Job preparatory programs through which a student may receive a vocational certificate upon completion of instruction.

Postsecondary Vocational (PSV) – Vocational education for students who have left or completed high school and who are enrolled in an organized program of study for which credit is given toward an associate degree.

Reporting Year – The summer, fall, and spring terms of overlapping calendar years. For example, summer 2006, fall 2007, and spring 2007 comprise the 2006-2007 reporting year. This differs from the academic year which begins with fall and ends with summer.

Returning Students – Students enrolled for the current term who were also enrolled in a prior term at the College.

Unduplicated Headcount – A headcount measure by which students are counted in only one category.

Vocational Certificate – The award for satisfactory completion of a program of study designed to prepare students for entry into an occupation.

Workforce Education Program – Training and/or retraining for adults who are out of school and already in the workforce.