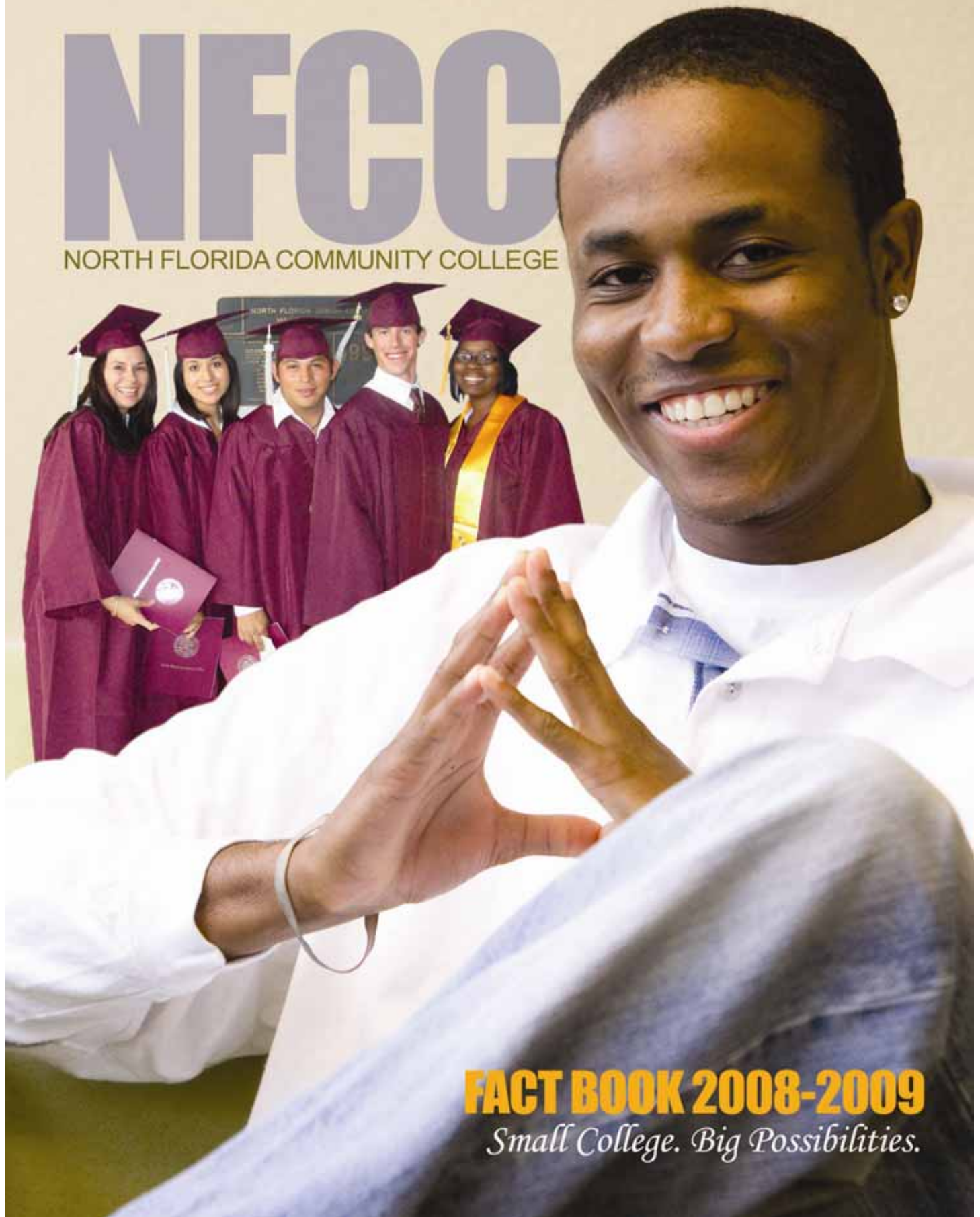


# NFC

NORTH FLORIDA COMMUNITY COLLEGE



**FACT BOOK 2008-2009**

*Small College. Big Possibilities.*

# NFCC

## Small College. Big Possibilities

Our mission is to provide innovative solutions and quality support services to help members of our College community effectively achieve their goals. The 2008-2009 NFCC

Fact Book provides information about North Florida Community College and includes student, financial, and personnel data. We have made every effort to ensure timely and accurate information.

We hope you will use this publication on a continual basis. We welcome feedback and suggestions, and our measure of success is the degree to which people find this publication informative and useful.



The Office of Institutional Effectiveness, Research, Planning & Technology

# Table of Contents

---

## **Enrollment**

- Student Data ..... 4
- By Program..... 5
- By County ..... 7
- By Gender..... 11
- By Age ..... 12
- By Ethnicity..... 13
- By Time of Day ..... 16

## **Student Success**

- Degrees Awarded ..... 18
- Student Transfer Data ..... 19
- Grade Distribution ..... 20

## **Distance Learning**

- Total Courses and Students ..... 22
- Student Demographics ..... 23

## **Dual Enrollment**

- Student Information ..... 24

## **Financial Aid**

- Total Distribution ..... 28
- Awards by County ..... 29

## **Other Information**

- NFCC Library ..... 32
- NFCC Foundation ..... 34
- Personnel ..... 36
- Finances ..... 37
- Glossary of Terms ..... 39



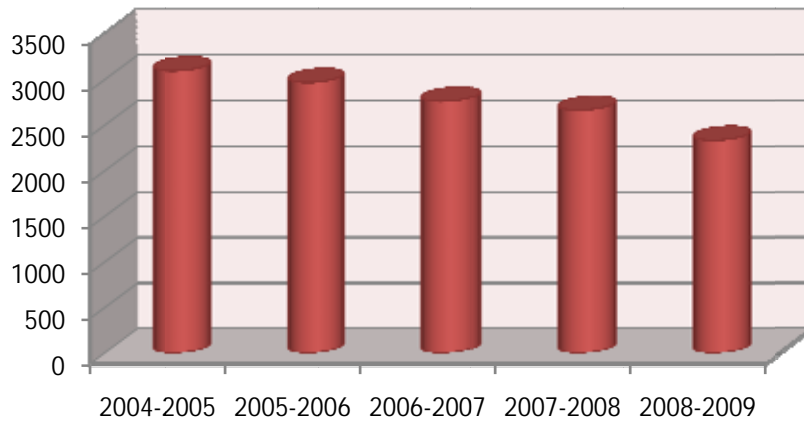


# Section 1: Enrollment

---

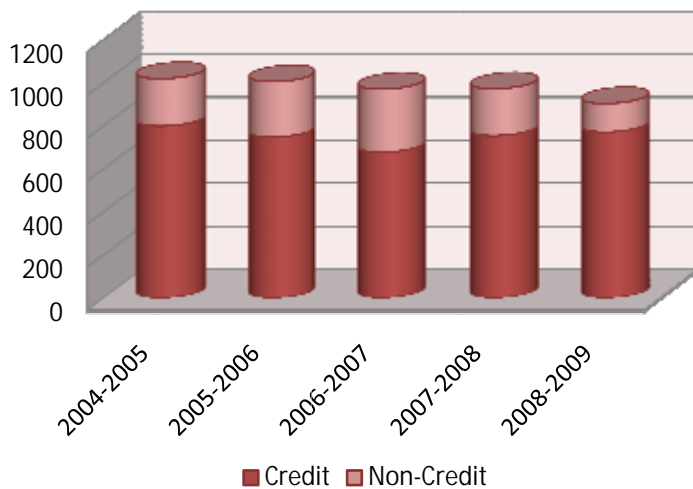
## Total Student Headcount (2004-2009)

2004-2005	2005-2006	2006-2007	2007-2008	2008-2009
3093	3017	2784	2667	2343



## Total Student FTE (2004-2009)

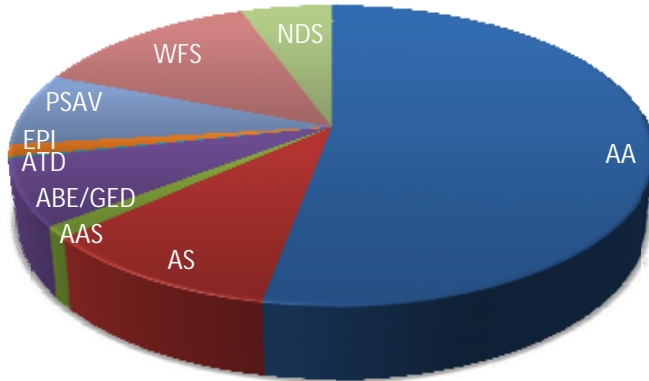
	2004-2005	2005-2006	2006-2007	2007-2008	2008-2009
<b>Credit</b>	799	748	677	754	771
<b>Non-Credit</b>	220	257	293	218	132
<b>Total</b>	1019	1005	970	972	903



# Enrollment

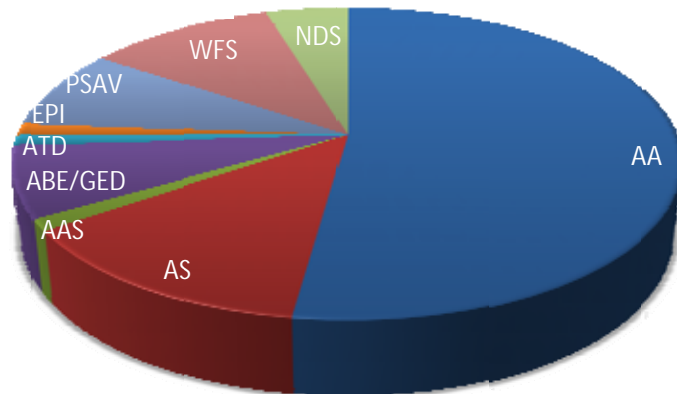
## Enrollment by Program (2008-2009)

Fall 2008



Program:		
AA	840	53%
AS	166	10%
AAS	20	1%
ABE/GED	112	7%
ATD	3	0%
EPI	21	1%
PSAV	125	18%
WFS	215	14%
NDS	87	5%
Total	1589	

Spring 2009



Program		
AA	702	52%
AS	178	13%
AAS	16	1%
ABE/GED	99	7%
ATD	14	1%
EPI	17	1%
PSAV	112	8%
WFS	144	11%
NDS	63	5%
Total	1345	

### Legend of programs:

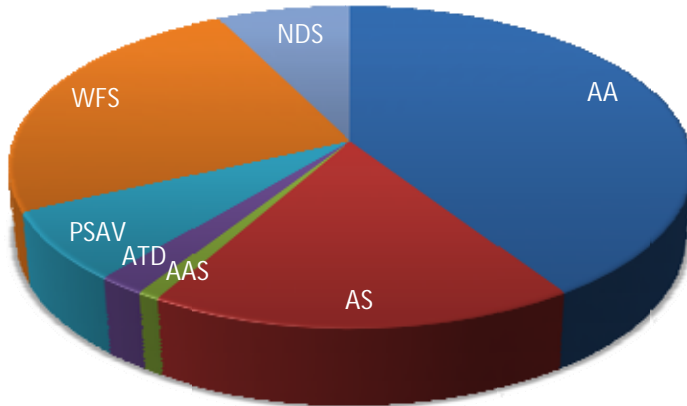
- AA: Associates in Arts
- AS: Associates in Science
- AAS: Associates in Applied Science
- ABE / GED: Adult Basic Education / General Education Diploma
- EPI: Educator Preparation Institute
- PSAV: Post-Secondary Adult Vocational Certificate
- WFS: Workforce / Supplemental
- NDS: Non-Degree Seeking

# Enrollment

---

## Enrollment by Program (2008-2009)

Summer 2009



Program		
AA	314	41%
AS	134	17%
AAS	7	1%
ATD	15	2%
PSAV	54	7%
WFS	189	25%
NDS	57	7%
Total	770	

### Legend of programs:

AA: Associates in Arts

AS: Associates in Science

AAS: Associates in Applied Science

ABE / GED: Adult Basic Education / General Education Diploma

EPI: Educator Preparation Institute

PSAV: Post-Secondary Adult Vocational Certificate

WFS: Workforce / Supplemental

NDS: Non-Degree Seeking

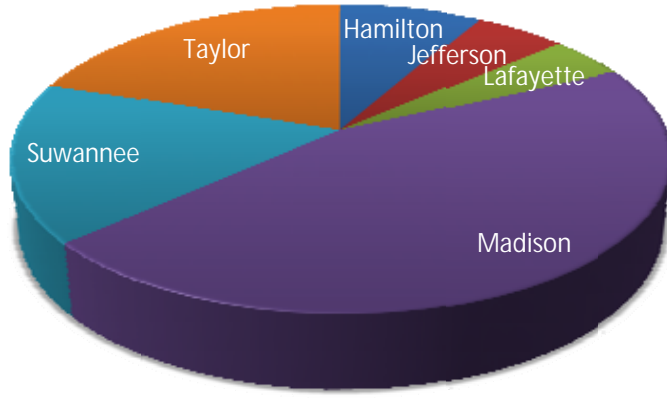
# Enrollment

---

## County Enrollment by Term (2008-2009)

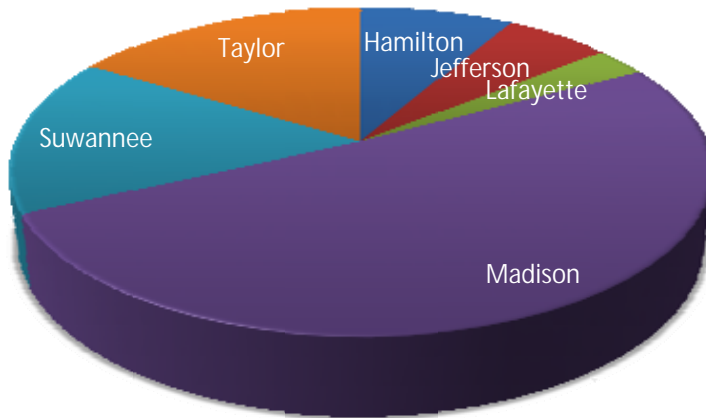
Fall 2008

Hamilton	123	8%
Jefferson	80	5%
Lafayette	68	4%
Madison	683	43%
Suwannee	253	16%
Taylor	298	19%
Other FL	57	4%
Out of State	27	2%
<b>Total</b>	<b>1589</b>	



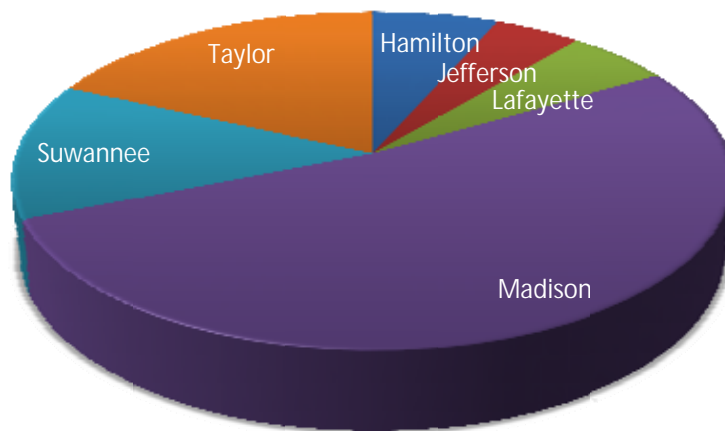
Spring 2009

Hamilton	105	8%
Jefferson	74	6%
Lafayette	36	3%
Madison	647	48%
Suwannee	198	15%
Taylor	207	15%
Other FL	64	5%
Out of State	14	1%
<b>Total</b>	<b>1345</b>	



Summer 2009

Hamilton	46	6%
Jefferson	32	4%
Lafayette	39	5%
Madison	367	48%
Suwannee	92	12%
Taylor	128	17%
Other FL	50	6%
Out of State	16	2%
<b>Total</b>	<b>770</b>	



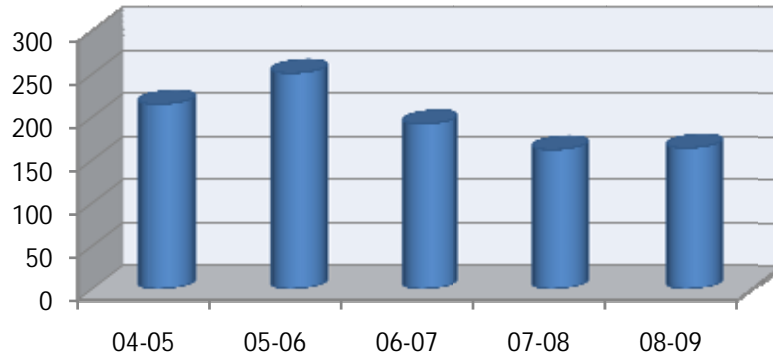


# Enrollment

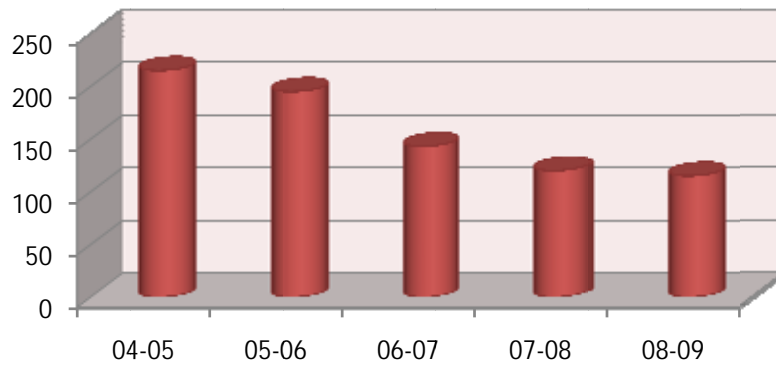
---

## 5 Year County Enrollment (2004-2009)

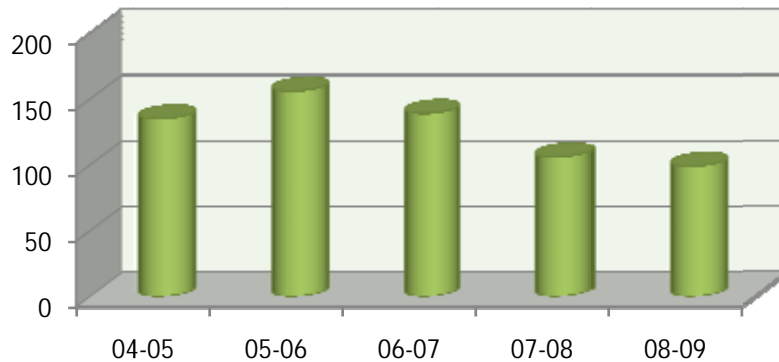
Hamilton	
04-05	212
05-06	251
06-07	192
07-08	162
08-09	164



Jefferson	
04-05	215
05-06	195
06-07	143
07-08	120
08-09	115



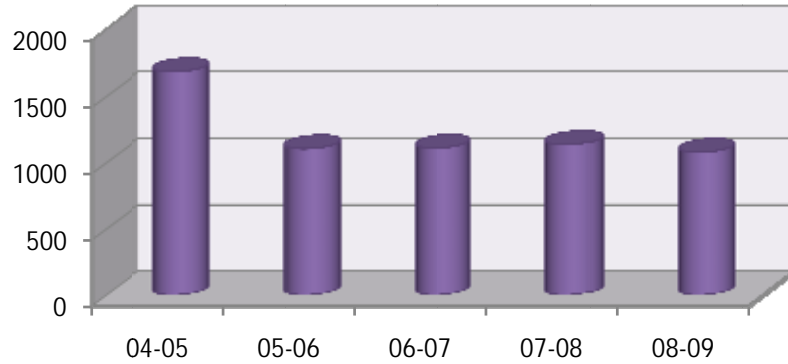
Lafayette	
04-05	135
05-06	156
06-07	139
07-08	106
08-09	99



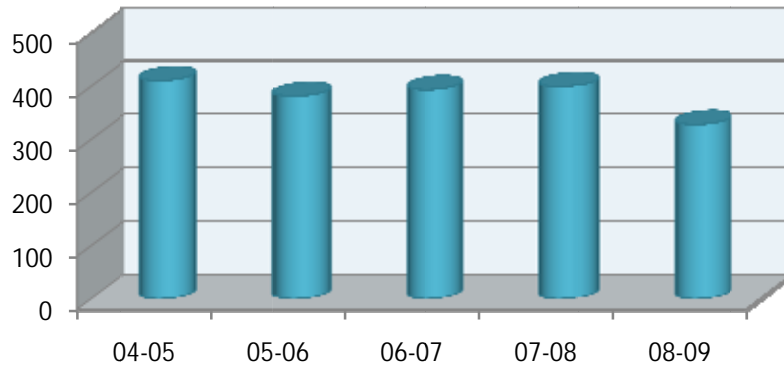
# Enrollment

## 5 Year County Enrollment (2004-2009)

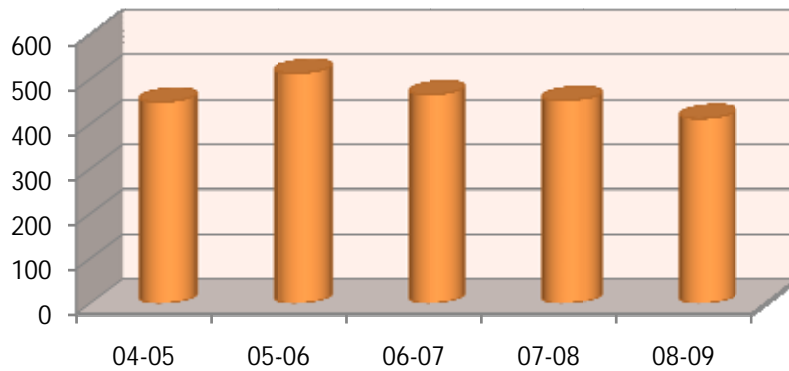
Madison	
04-05	1679
05-06	1100
06-07	1104
07-08	1131
08-09	1073



Suwannee	
04-05	408
05-06	379
06-07	391
07-08	397
08-09	326



Taylor	
04-05	449
05-06	513
06-07	465
07-08	452
08-09	412

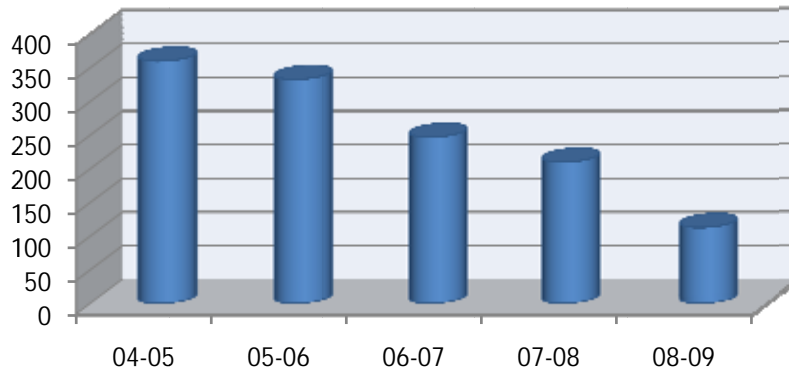


# Enrollment

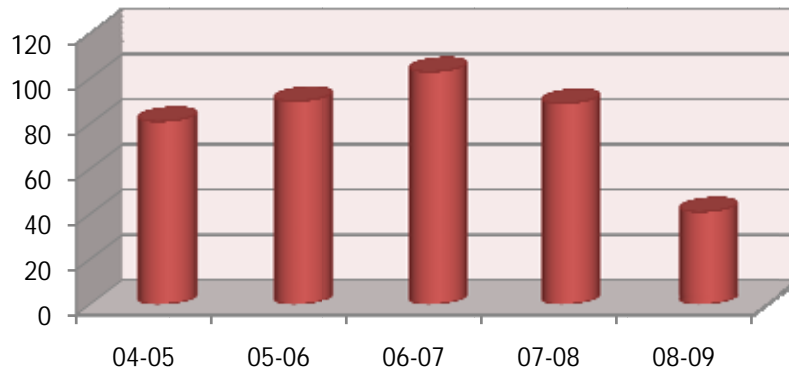
---

## 5 Year County Enrollment (2004-2009)

Other Florida	
04-05	360
05-06	333
06-07	247
07-08	210
08-09	113



Out of State	
04-05	81
05-06	90
06-07	103
07-08	89
08-09	41

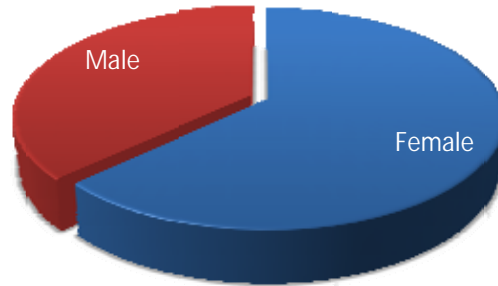


# Enrollment

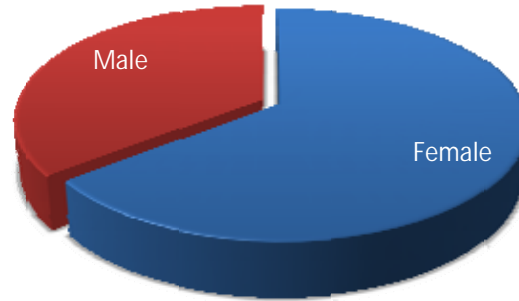
---

## Enrollment by Gender (2008-2009)

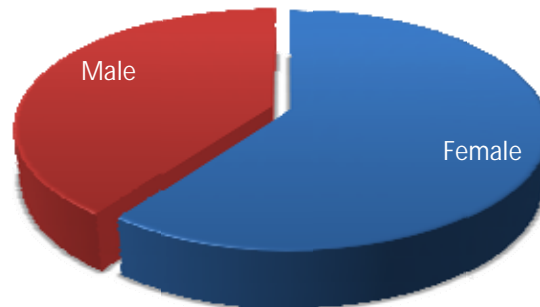
Fall 2008		
Female	1000	63%
Male	589	37%



Spring 2009		
Female	866	64%
Male	479	36%



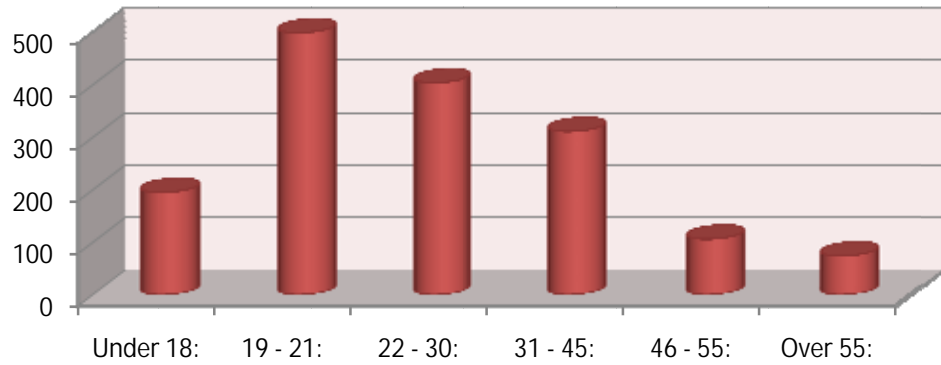
Summer 2009		
Female	462	60%
Male	308	40%



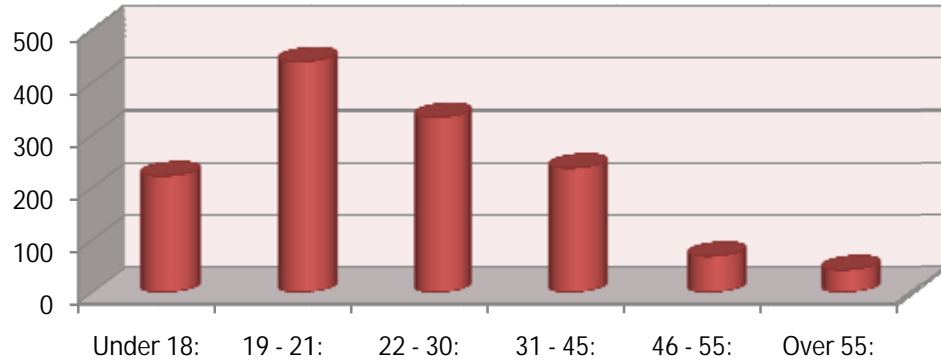
# Enrollment

## Enrollment by Age (2008-2009)

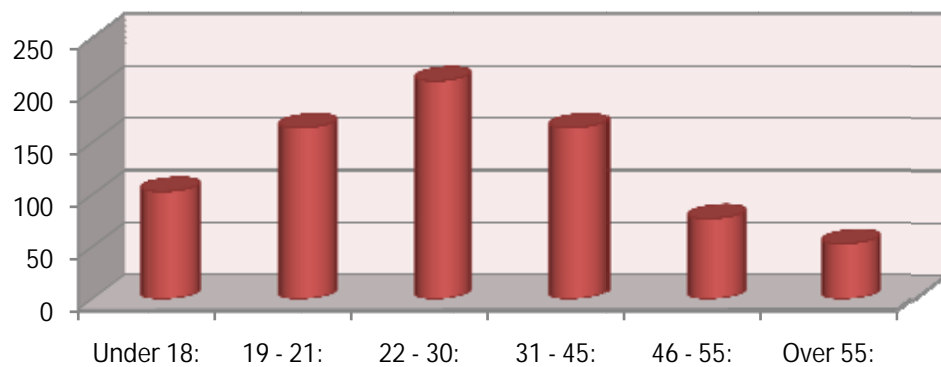
Fall 2008	
Under 18:	195
19 - 21:	499
22 - 30:	404
31 - 45:	311
46 - 55:	106
Over 55:	74
<b>Total:</b>	<b>1589</b>
<b>Average Age:</b>	<b>28</b>



Spring 2009	
Under 18:	222
19 - 21:	440
22 - 30:	334
31 - 45:	237
46 - 55:	69
Over 55:	43
<b>Total:</b>	<b>1345</b>
<b>Average Age:</b>	<b>27</b>



Summer 2009	
Under 18:	103
19 - 21:	164
22 - 30:	209
31 - 45:	164
46 - 55:	77
Over 55:	53
<b>Total:</b>	<b>770</b>
<b>Average Age:</b>	<b>30</b>



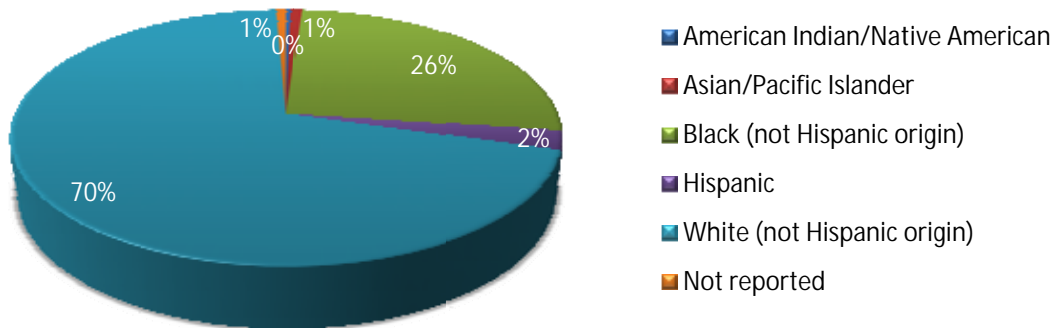
# Enrollment

---

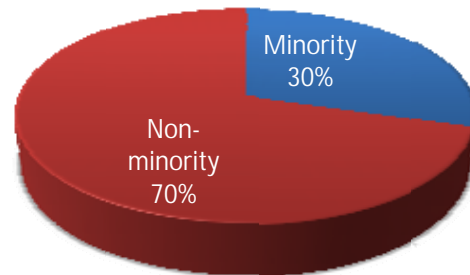
## Enrollment by Ethnicity (2008-2009)

Fall 2008

	#	%
American Indian/Native American:	5	0.3%
Asian/Pacific Islander:	12	0.8%
Black (not Hispanic origin):	416	26.2%
Hispanic:	38	2.4%
White (not Hispanic origin):	1107	69.7%
Not reported:	11	0.7%
<b>Total:</b>	<b>1589</b>	



Minority	30%
Non-minority	70%





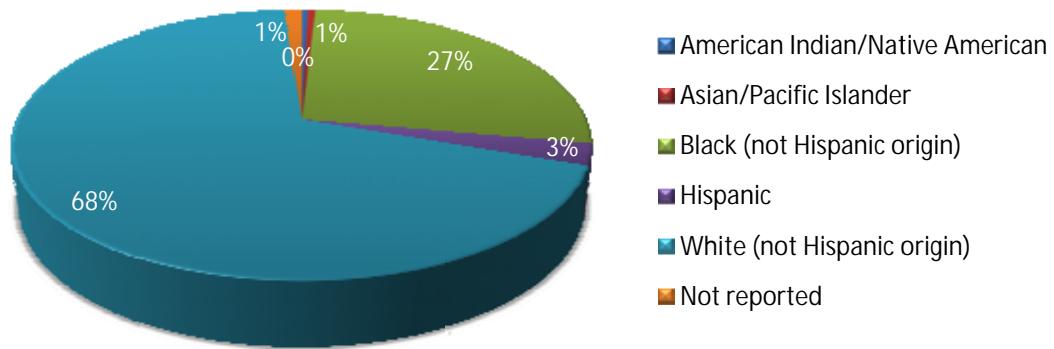
# Enrollment

---

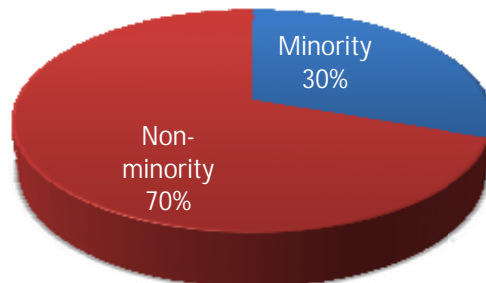
## Enrollment by Ethnicity (2008-2009)

Spring 2008

	#	%
American Indian/Native American	5	0%
Asian/Pacific Islander	7	1%
Black (not Hispanic origin)	362	27%
Hispanic	35	3%
White (not Hispanic origin)	921	68%
Not reported	15	1%
<b>Total</b>	<b>1345</b>	



Minority	30%
Non-minority	70%

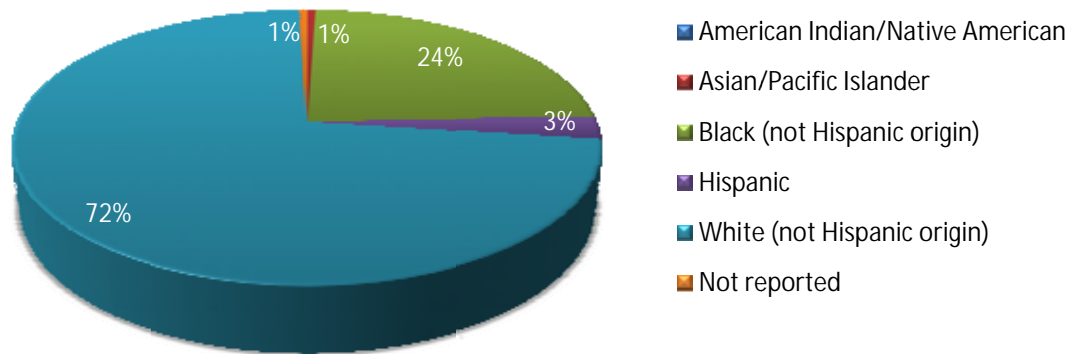


# Enrollment

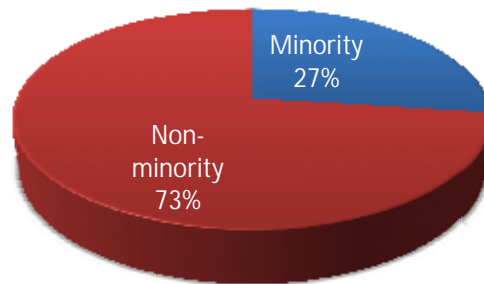
## Enrollment by Ethnicity (2008-2009)

Summer 2009

	#	%
American Indian/Native American		
Asian/Pacific Islander	4	1%
Black (not Hispanic origin)	184	24%
Hispanic	21	3%
White (not Hispanic origin)	557	72%
Not reported	4	1%
<b>Total</b>	<b>770</b>	



Minority	27%
Non-minority	73%



## Enrollment

---

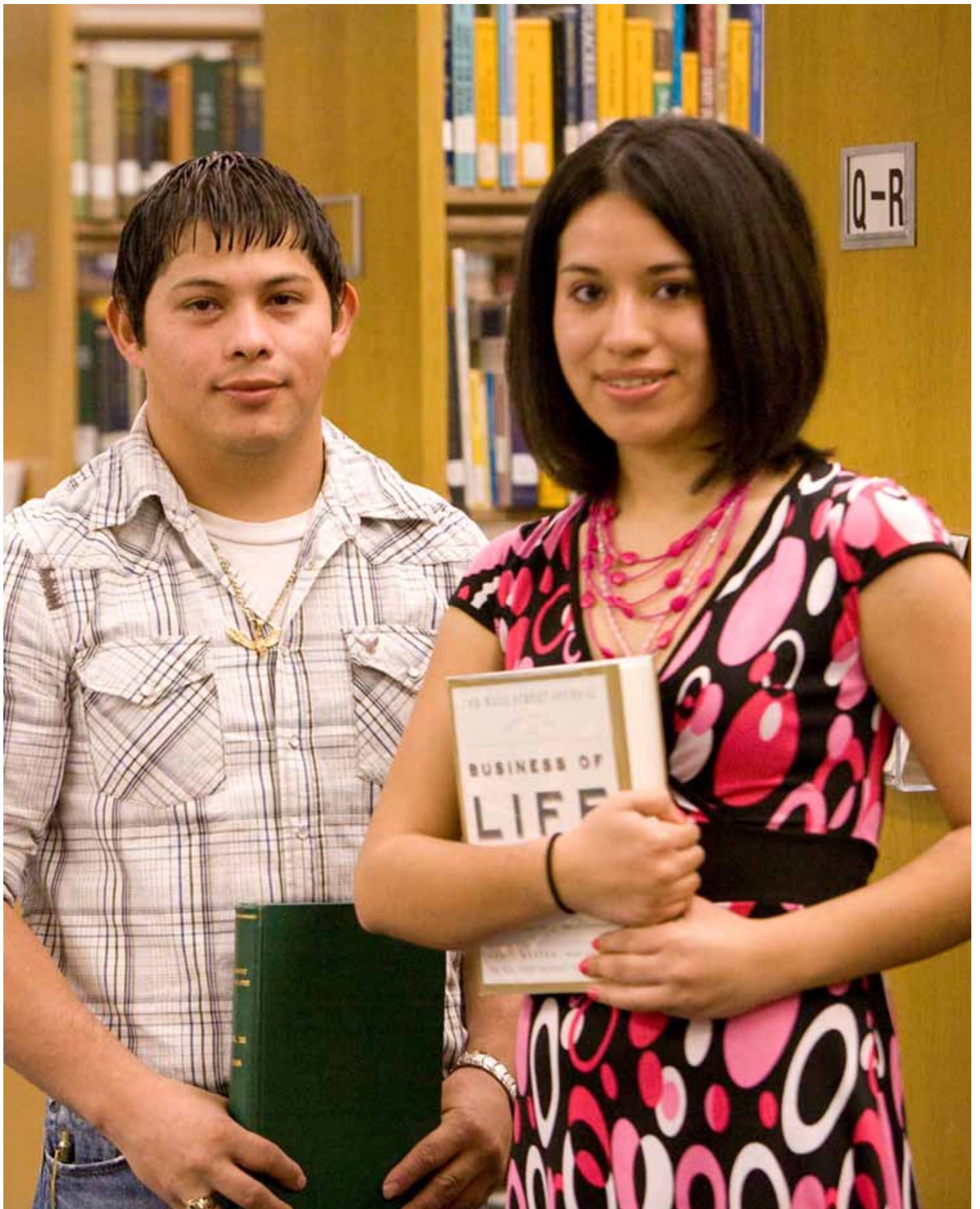
### Student Schedule by Day & Time (2008-2009)

Fall 2008

	Monday	Tuesday	Wednesday	Thursday	Friday	Saturday
8:00 - 9:15 a.m.	386	418	494	422	167	45
9:30 - 10:45 a.m.	324	289	377	329	107	0
11:00 - 12:15 p.m.	165	246	289	255	85	38
12:30 - 1:45 p.m.	240	178	258	186	30	12
2:00 - 4:00 p.m.	50	180	85	137	66	0
5:00 p.m. or later	253	425	239	240	0	0

Spring 2009

	Monday	Tuesday	Wednesday	Thursday	Friday	Saturday
8:00 - 9:15 a.m.	364	387	401	387	181	37
9:30 - 10:45 a.m.	231	160	231	160	17	0
11:00 - 12:15 p.m.	242	226	251	218	8	16
12:30 - 1:45 p.m.	180	160	181	160	51	8
2:00 - 4:00 p.m.	184	236	184	260	10	26
5:00 p.m. or later	117	293	129	154	16	62



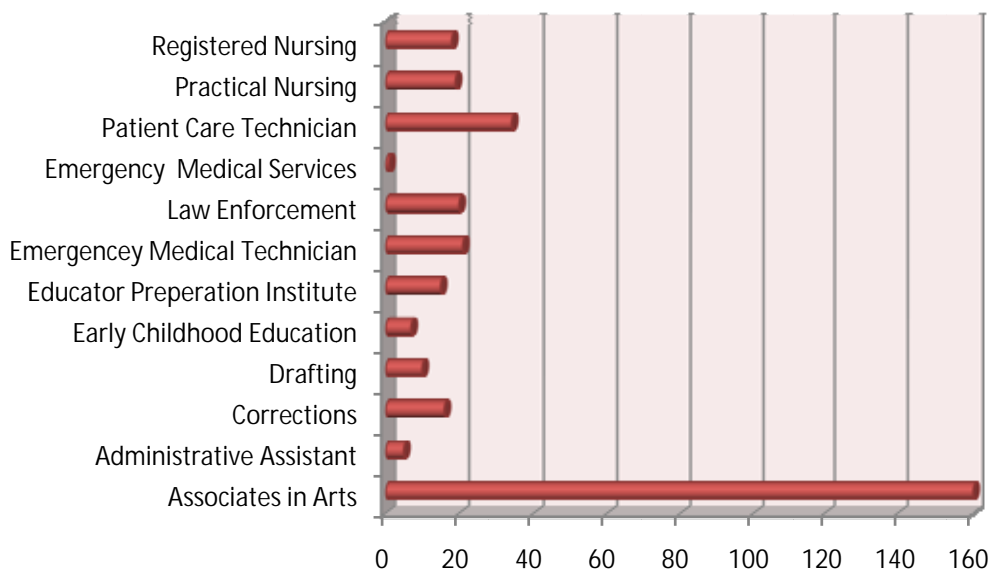
## Section 2: Student Success

### Degrees Awarded (2003–2008)

	04-05	05-06	06-07	07-08	08-09
Associates in Arts	155	141	139	114	160
Associates in Science	5	1	0	21	19
Associates in Applied Science	15	5	8	6	5
ATD	11	19	13	27	21
Certificates	170	145	126	128	106
Educator Preparation		24	25	23	15
<b>Total</b>	<b>356</b>	<b>335</b>	<b>311</b>	<b>319</b>	<b>326</b>

### Graduates by Program

Associates in Arts	160	<b>Emergency Medical Technician</b>	21
Administrative Assistant	5	Law Enforcement (AS & Cert.)	20
Corrections	16	Emergency Medical Services	1
Drafting	10	Patient Care Technician	34
Early Childhood Education (AS & Cert.)	7	Practical Nursing	19
Educator Preparation Institute	15	Registered Nursing	18

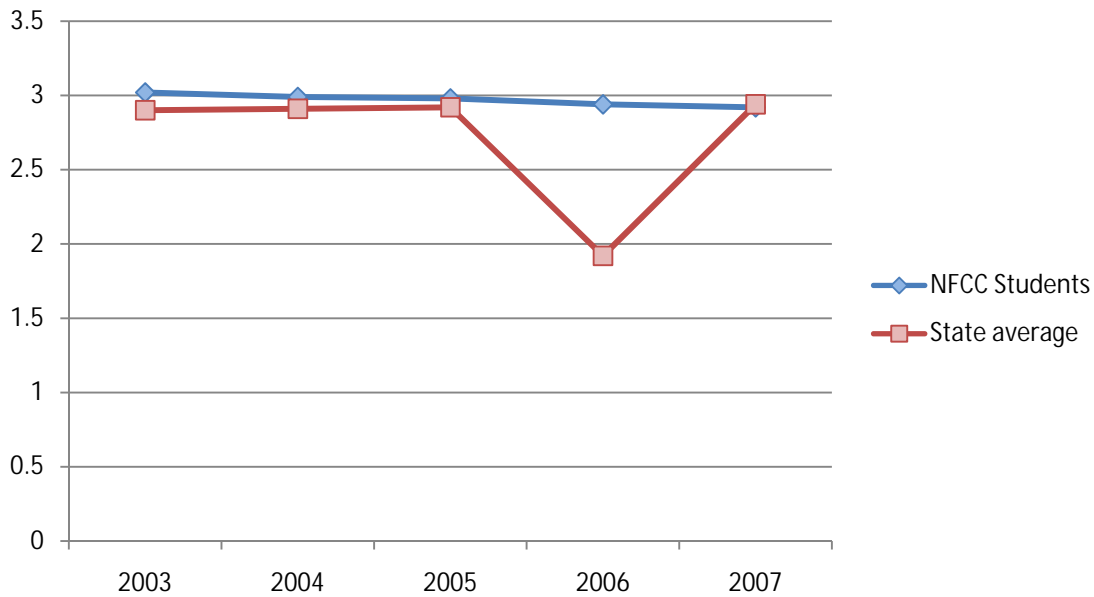


# Student Success

---

## NFCC Transfer Success (2003-2007)

Mean cumulative grade-point averages for NFCC graduates who transfer to Florida public universities



	2003	2004	2005	2006	2007
NFCC Students	3.02	2.99	2.98	2.94	2.92
State average	2.90	2.91	2.92	2.92	2.94

Data retrieved from <http://www.fldoehub.org/CCTCMIS/c/Pages/default.aspx>

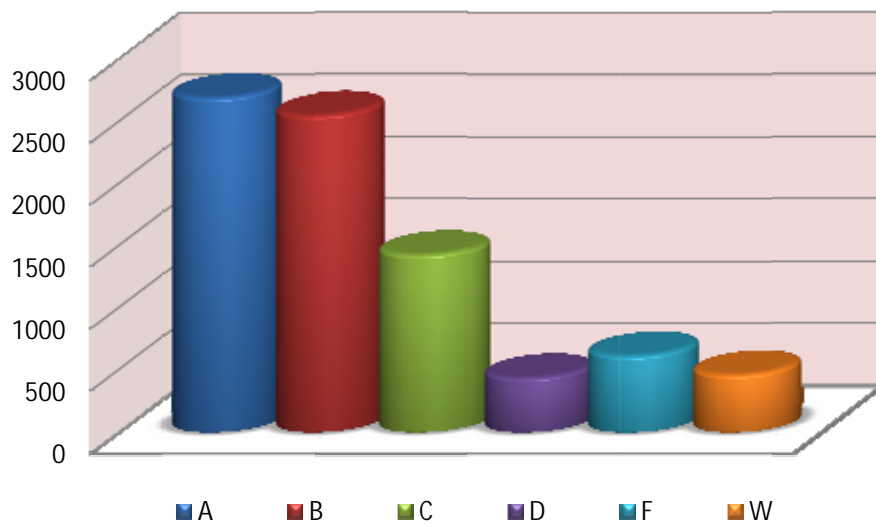


## Student Success

---

### Grade Distribution in NFCC Courses (2008-2009)

A	B	C	D	F	W	Total
2694	2547	1425	438	616	463	8183



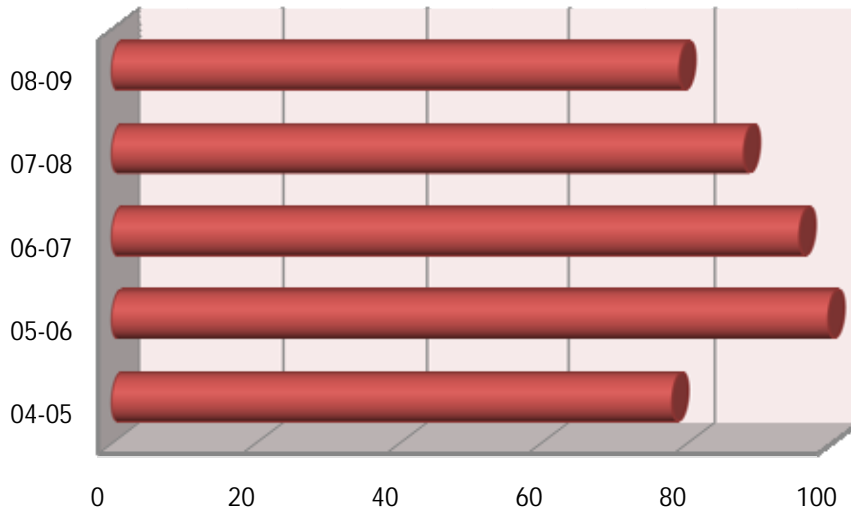


# Section 3: Distance Learning

---

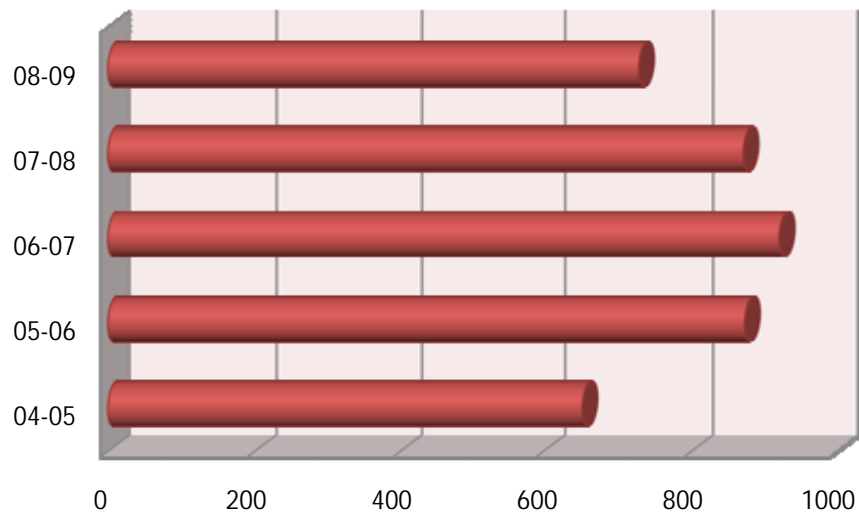
### Number of Online Courses (2004-2009)

Year	# of courses
04-05	78
05-06	100
06-07	96
07-08	88
08-09	79



### Number of Online Students (2004-2009)

Year	# of students
04-05	608
05-06	808
06-07	852
07-08	815
08-09	692

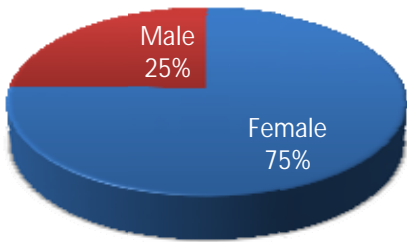


# Distance Learning

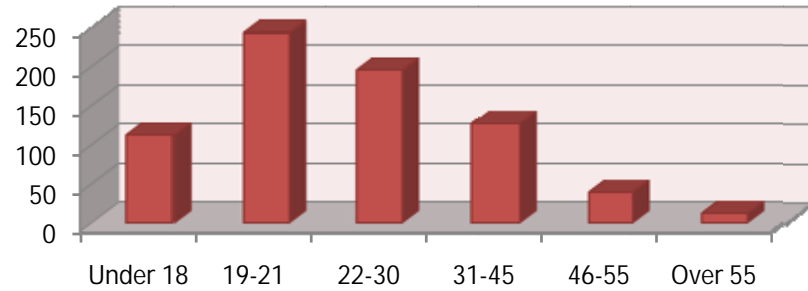
## Online Student Demographics (2008-2009)

### Gender

Female	548
Male	180



### Age



Under 18	19-21	22-30	31-45	46-55	Over 55
112	243	195	127	39	12

### Ethnicity

American India/Alaskan Native:	3
Asian:	4
Black:	156
Hispanic:	23
White:	4
Not Reported:	538

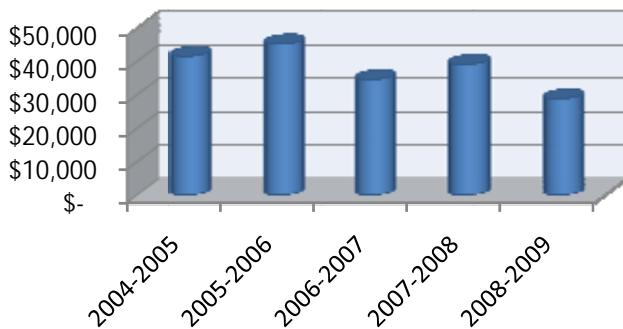


- American India/Alaskan Native
- Black
- Asian
- Hispanic
- Not Reported
- White

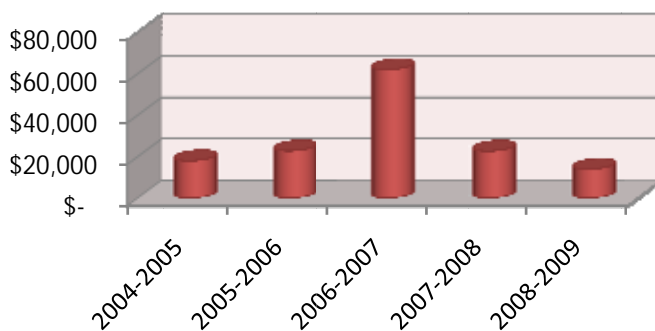
## Dual Enrollment

### Number and cost of Dual Enrolled Student (2004-2009)

Hamilton					
	# of Students	Credit hours	County Value	Total NFCC DE Value	% Total DE Value
2004-2005	39	717	\$ 41,586	\$ 235,064	18%
2005-2006	39	729	\$ 45,198	\$ 215,012	21%
2006-2007	30	526	\$ 34,606	\$ 241,481	14%
2007-2008	28	595	\$ 39,151	\$ 210,296	19%
2008-2009	29	395	\$ 28,835	\$ 230,899	12%
<b>5 Yr. Total</b>	<b>165</b>		<b>\$ 189,376</b>	<b>\$ 1,132,752</b>	<b>17%</b>



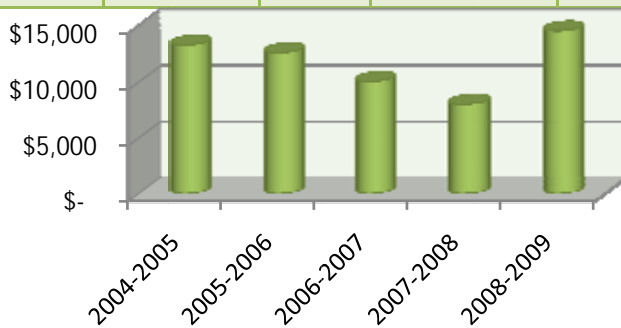
Jefferson					
	# of Students	Credit hours	County Value	Total NFCC DE Value	% Total DE Value
2004-2005	24	312	\$ 18,096	\$ 235,064	8%
2005-2006	32	369	\$ 22,878	\$ 215,012	11%
2006-2007	49	944	\$ 62,115	\$ 241,481	26%
2007-2008	26	364	\$ 22,766	\$ 210,296	11%
2008-2009	16	192	\$ 14,016	\$ 230,899	6%
<b>5 Yr. Total</b>	<b>147</b>		<b>\$ 139,871</b>	<b>\$ 1,132,752</b>	<b>12%</b>



## Dual Enrollment

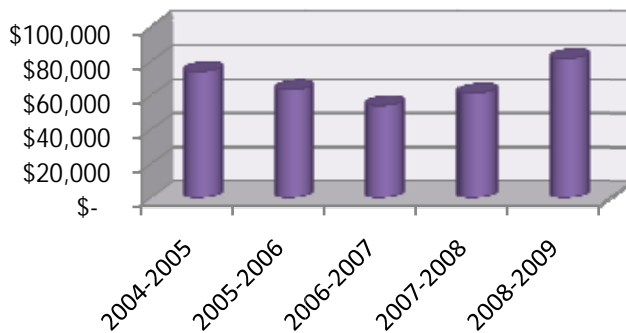
### Lafayette

	# of Students	Credit hours	County Value	Total NFCC DE Value	% Total DE Value
2004-2005	18	230	\$ 13,340	\$ 235,064	6%
2005-2006	19	204	\$ 12,648	\$ 215,012	6%
2006-2007	24	153	\$ 10,067	\$ 241,481	4%
2007-2008	13	122	\$ 8,027	\$ 210,296	4%
2008-2009	19	200	\$ 14,600	\$ 230,899	6%
<b>5 Yr. Total</b>	<b>93</b>		<b>\$ 58,682</b>	<b>\$ 1,132,752</b>	<b>5%</b>



### Madison

	# of Students	Credit hours	County Value	Total NFCC DE Value	% Total DE Value
2004-2005	100	1275	\$ 73,950	\$ 235,064	31%
2005-2006	85	1020	\$ 63,240	\$ 215,012	29%
2006-2007	80	821	\$ 54,022	\$ 241,481	22%
2007-2008	83	932	\$ 61,325	\$ 210,296	29%
2008-2009	85	1117	\$ 81,541	\$ 230,899	35%
<b>5 Yr. Total</b>	<b>433</b>	<b>5165</b>	<b>\$ 334,078</b>	<b>\$ 1,132,752</b>	<b>29%</b>

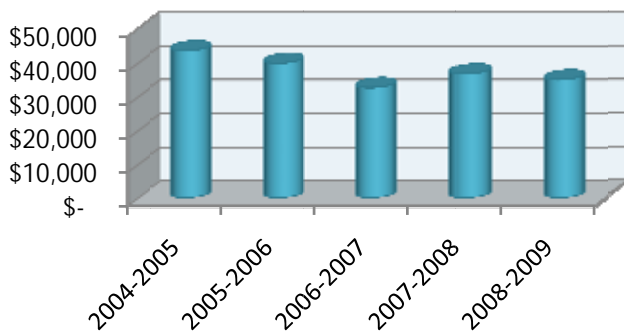




## Dual Enrollment

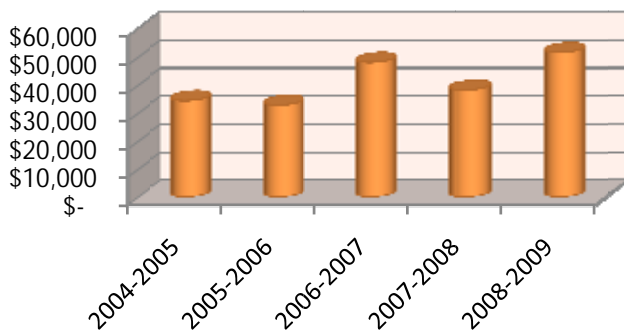
### Suwannee

	# of Students	Credit hours	County Value	Total NFCC DE Value	% Total DE Value
2004-2005	72	751	\$ 43,558	\$ 235,064	19%
2005-2006	63	643	\$ 39,866	\$ 215,012	19%
2006-2007	52	496	\$ 32,637	\$ 241,481	14%
2007-2008	51	558	\$ 36,716	\$ 210,296	17%
2008-2009	44	479	\$ 34,967	\$ 230,899	15%
5 Yr. Total	282	2927	\$ 187,744	\$ 1,132,752	17%



### Taylor

	# of Students	Credit hours	County Value	Total NFCC DE Value	% Total DE Value
2004-2005	48	593	\$ 34,390	\$ 235,064	15%
2005-2006	52	529	\$ 32,794	\$ 215,012	15%
2006-2007	55	730	\$ 48,034	\$ 241,481	20%
2007-2008	52	580	\$ 38,164	\$ 210,296	18%
2008-2009	56	706	\$ 51,538	\$ 230,899	22%
5 Yr. Total	263	3138	\$ 204,920	\$ 1,132,752	18%

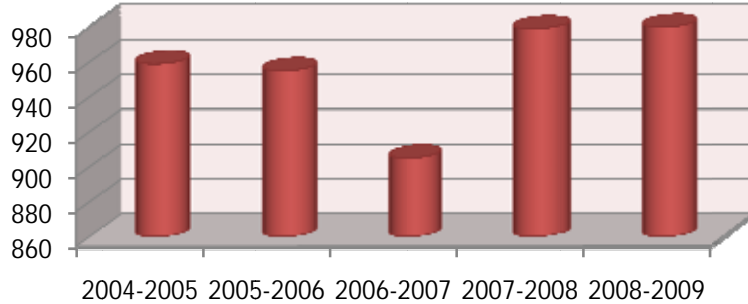




# Section 4: Financial Aid

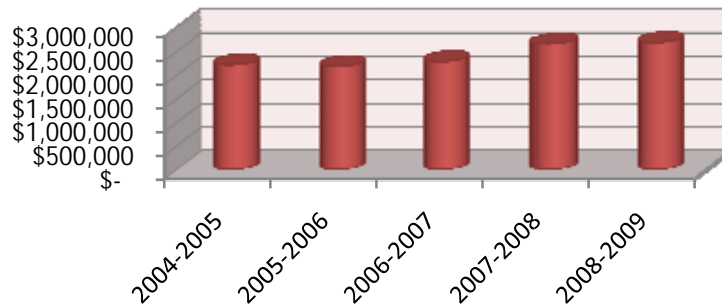
## Number of Financial Aid Awards (2004-2009)

2004-2005	959
2005-2006	955
2006-2007	905
2007-2008	979
2008-2009	980



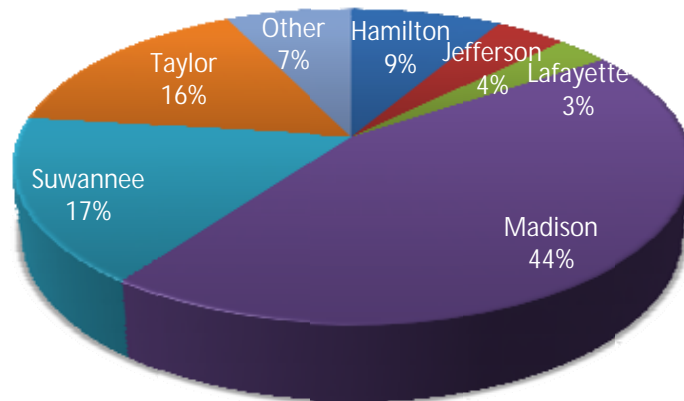
## Dollar Amount of Financial Aid Awards (2004-2009)

2004-2005	\$ 2,218,090
2005-2006	\$ 2,184,731
2006-2007	\$ 2,290,129
2007-2008	\$ 2,664,624
2008-2009	\$ 2,691,770



## Distribution by County (2008-2009)

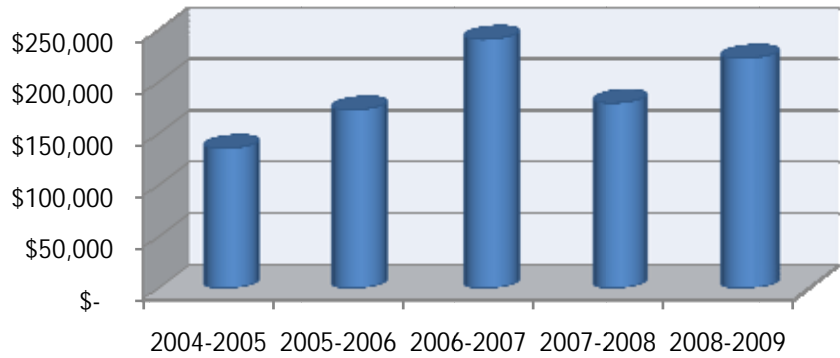
Hamilton	\$ 223,123
Jefferson	\$ 107,554
Lafayette	\$ 79,692
Madison	\$ 1,171,335
Suwannee	\$ 446,688
Taylor	\$ 415,456
Other	\$ 192,138



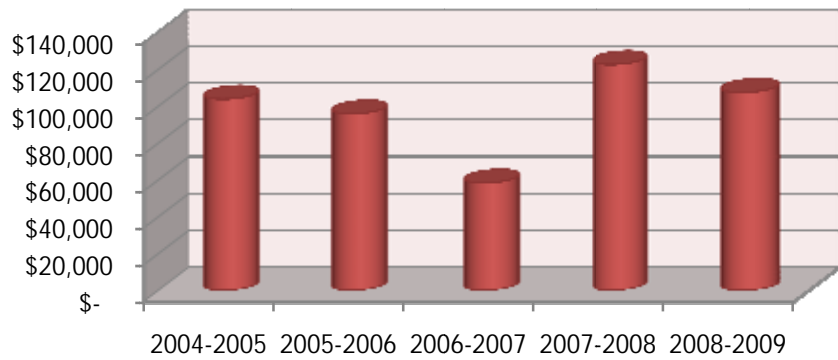
# Financial Aid

## Awards by County

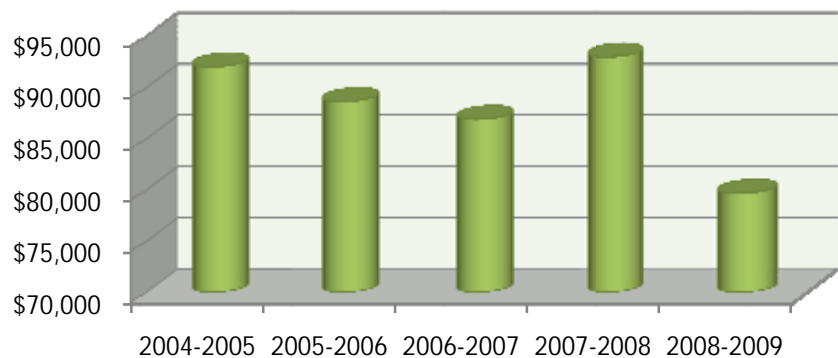
Hamilton		
	# of Students	Awards Paid
2004-2005	70	\$ 135,751
2005-2006	75	\$ 173,138
2006-2007	74	\$ 241,536
2007-2008	66	\$ 179,772
2008-2009	77	\$ 223,123



Jefferson		
	# of Students	Awards Paid
2004-2005	60	\$ 103,889
2005-2006	53	\$ 95,896
2006-2007	35	\$ 58,354
2007-2008	49	\$ 122,667
2008-2009	49	\$ 107,554



Lafayette		
	# of Students	Awards Paid
2004-2005	36	\$ 92,053
2005-2006	38	\$ 88,644
2006-2007	41	\$ 86,913
2007-2008	42	\$ 93,005
2008-2009	32	\$ 79,692

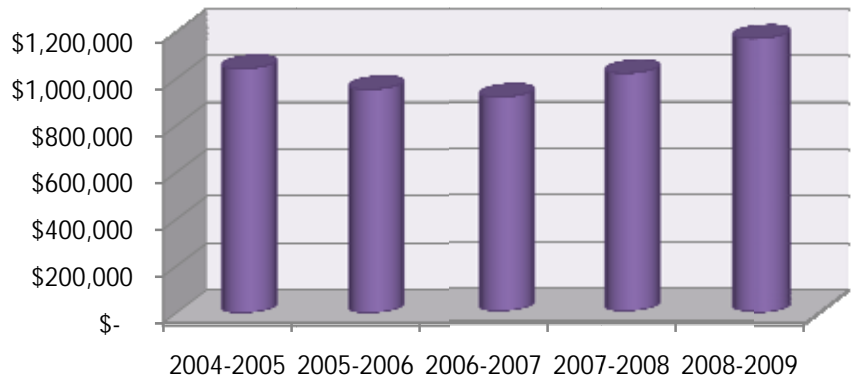


# Financial Aid

## Awards by County

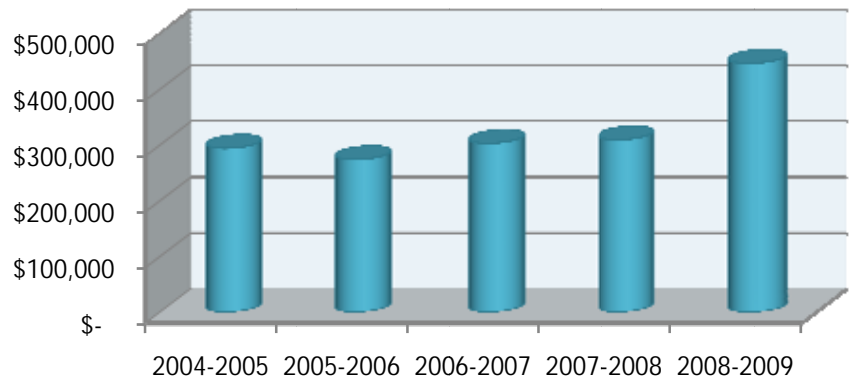
### Madison

	# of Students	Awards Paid
2004-2005	415	\$ 1,042,649
2005-2006	412	\$ 953,914
2006-2007	388	\$ 919,160
2007-2008	395	\$ 1,021,526
2008-2009	428	\$ 1,171,335



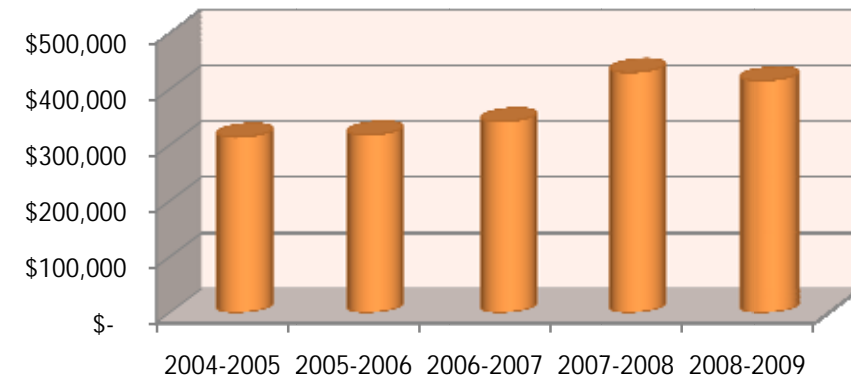
### Suwannee

	# of Students	Awards Paid
2004-2005	135	\$ 293,970
2005-2006	133	\$ 273,655
2006-2007	129	\$ 302,995
2007-2008	129	\$ 309,210
2008-2009	154	\$ 446,688

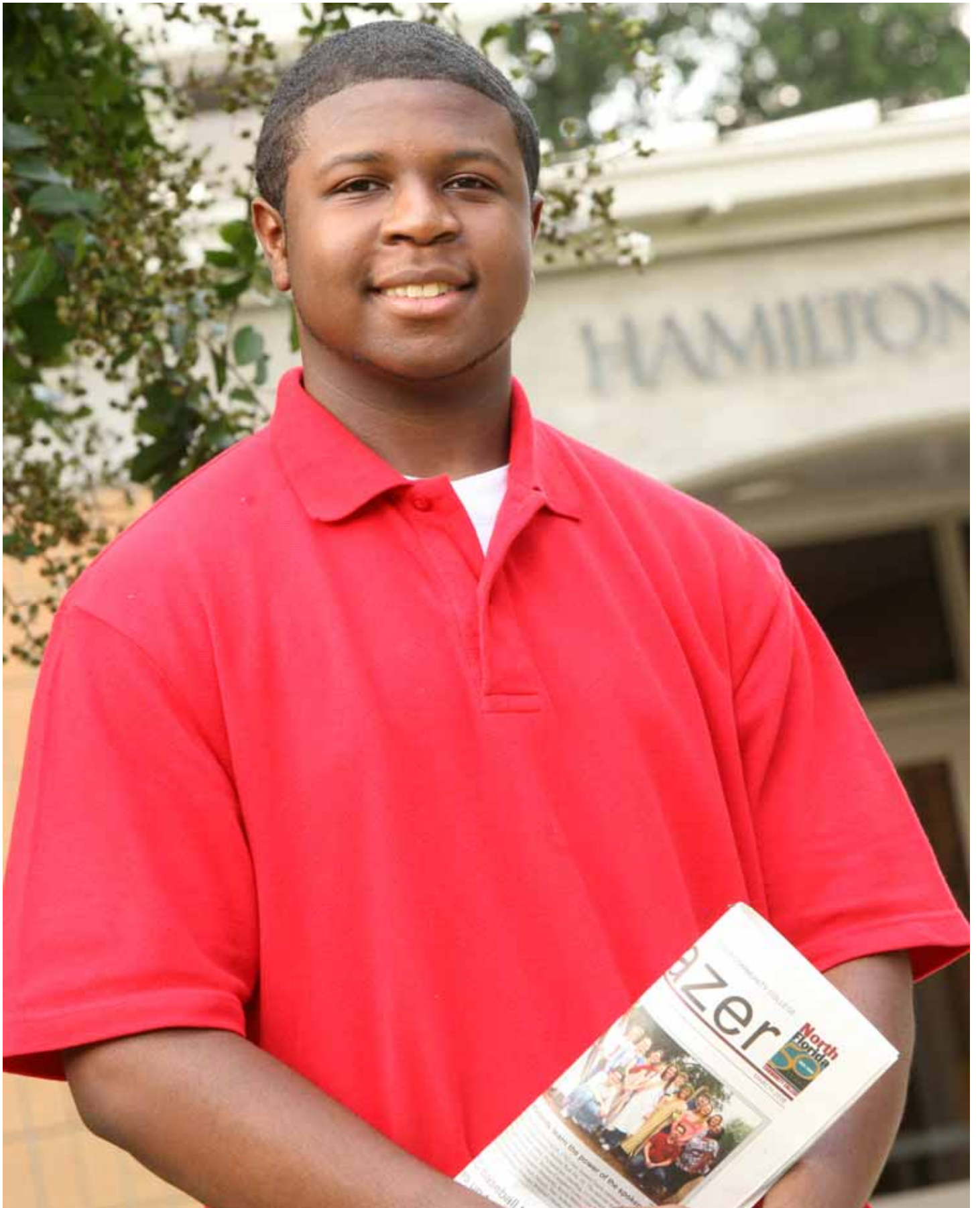


### Taylor

	# of Students	Awards Paid
2004-2005	140	\$ 314,078
2005-2006	163	\$ 317,984
2006-2007	156	\$ 341,690
2007-2008	179	\$ 429,934
2008-2009	169	\$ 415,456





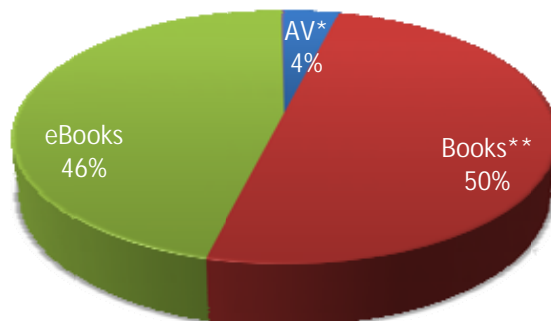




# Section 5: NFCC Library

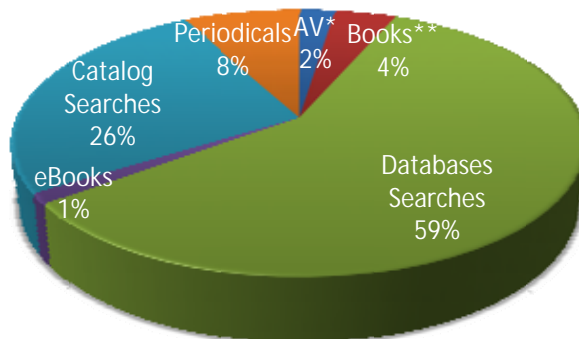
## 2007-2008 Collections

Audio Visuals*	2,585
Books**	33,041
eBooks	30,330
Electronic Databases	107
Periodicals	23



## 2007-2008 Circulation Statistics

Audio Visuals*	2,606
Books**	4,429
Databases Searches	63,728
eBooks	1,408
Online Catalog Searches	28,420
Periodicals	8,525



\*Audio visuals include audiocassettes, DVDs, CDs, and video tapes

\*\*Books includes titles from circulation and reference collections

## Fiscal Acquisitions by Library of Congress Classifications

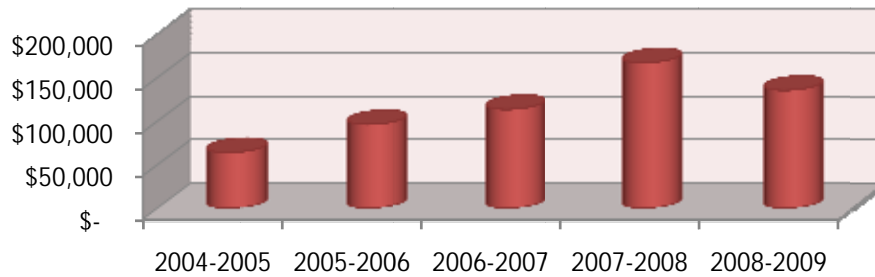
General Works	5	Music	45
Philosophy	64	Fine Arts	83
Psychology, Religion	15	Literature	154
Auxiliary Sciences of History	15	Science	78
History: General and Old World	104	Medicine	71
History: America	189	Agriculture	21
Geography, Anthropology, Recreation	70	Technology	80
Social Science	138	Military Science	7
Political Science	17	Naval Science	2
Law	13	Bibliographies, Library Science	8
Education	48		



# Section 6: NFCC Foundation

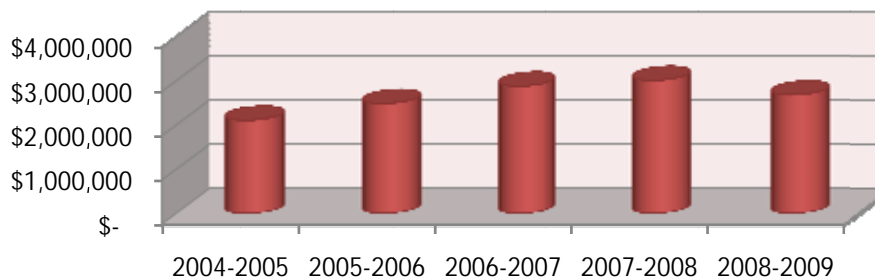
## Scholarships Awarded (2004-2008)

2004-2005	2005-2006	2006-2007	2007-2008	2008-2009
\$ 64,118	\$ 96,184	\$ 113,529	\$ 167,085	\$ 135,448



## Foundation Assets (2004-2008)

2004-2005	2005-2006	2006-2007	2007-2008	2008-2009
\$ 2,106,447	\$ 2,486,030	\$ 2,880,106	\$ 3,008,821	\$ 2,679,205



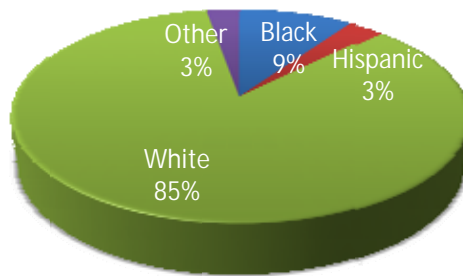
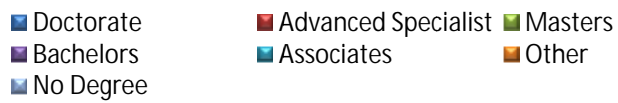
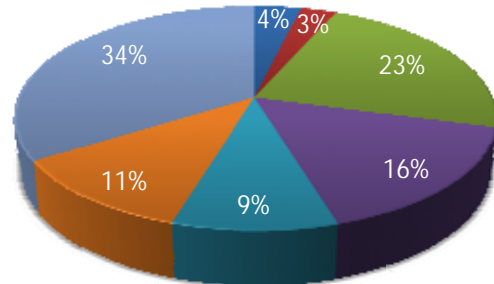




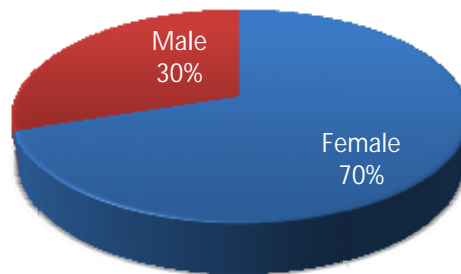
# Section 7: Personnel

## Full-Time Employees (2008-2009)

Doctorate	4
Advanced Specialist	3
Masters	24
Bachelors	17
Associates	10
Other	12
No Degree	36



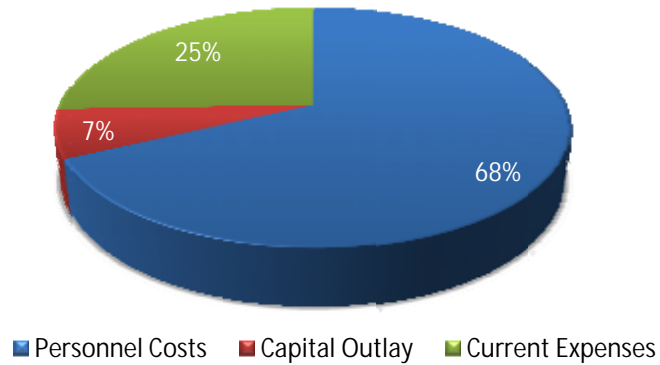
	Female	Male
Black	7	3
Hispanic	2	2
White	61	28
Other	2	2



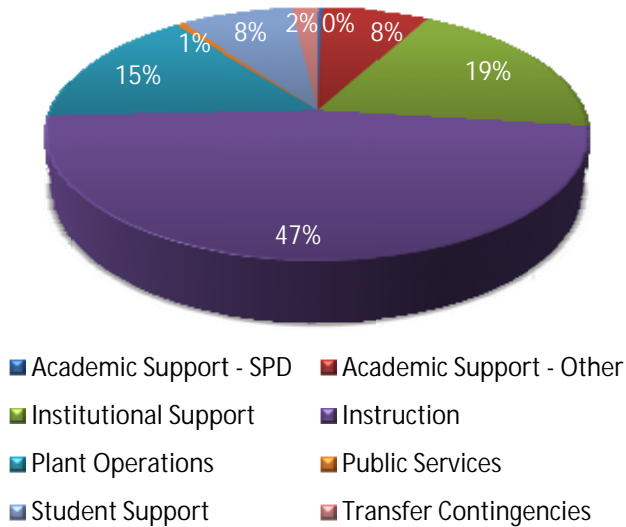
# Section 8: Finances

## General Fund Budget (2009-2010)

By Object	
Personnel Costs	\$ 5,749,777
Capital Outlay	\$ 553,065
Current Expenses	\$ 2,160,971
<b>Total</b>	<b>\$ 8,463,813</b>



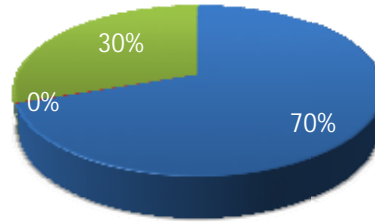
By Organizational Unit	
Academic Support - SPD	\$ 25,000
Academic Support - Other	\$ 637,862
Institutional Support	\$ 1,612,068
Instruction	\$ 4,006,663
Plant Operations	\$ 1,302,706
Public Services	\$ 45,991
Student Support	\$ 676,148
Transfer Contingencies	\$ 157,375
<b>Total</b>	<b>\$ 8,463,813</b>



# Finances

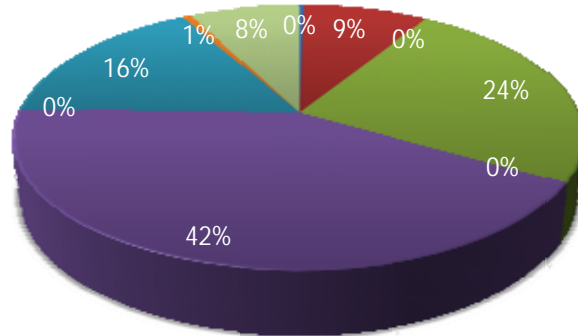
## General Fund Expenditures (2008-2009)

By Object	
Personnel Costs	\$ 5,879,466
Capital Outlay	\$ 13,920
Current Expenses	\$ 2,553,749
<b>Total</b>	<b>\$ 8,447,136</b>



■ Personnel Costs   ■ Capital Outlay   ■ Current Expenses

By Organizational Unit	
Academic Support - SPD	\$ 24,639
Academic Support - Other	\$ 727,148
Institutional Support	\$ 2,059,426
Instruction	\$ 3,575,018
Plant Operations	\$ 1,382,484
Public Services	\$ 48,310
Research	\$ 266
Student Aid	\$ 86
Student Support	\$ 628,248
Transfer Contingencies	\$ 1,511
<b>Total</b>	<b>\$ 8,447,136</b>



■ Academic Support - SPD   ■ Academic Support - Other   ■ Institutional Support  
 ■ Instruction   ■ Plant Operations   ■ Public Services  
 ■ Research   ■ Student Aid   ■ Student Support  
 ■ Transfer Contingencies

# Glossary of Terms

**Academic Year** – The fall, spring, and summer terms of overlapping calendar years. For example, fall 2006, spring 2007, and summer 2007 comprise the 2006-2007 academic year. This differs from the reporting year which begins with summer and ends with spring.

**Accreditation** – Certification by an official review board that specific requirements have been met. NFCC is accredited by the Southern Association of Colleges and Schools (SACS).

**Adult Basic Education (ABE)** – Education for adults to help them attain basic or functional literacy skills.

**Advanced & Professional (A&P)** – A program area with courses designed to provide the first two years of course work leading to an advanced or professional degree (bachelors, masters, etc.). It includes general education and specialized lower-division courses necessary to transfer into a degree program.

**Associate in Arts (AA)** – A program of instruction that consists of courses offered to freshmen and sophomores. This degree will transfer to the state university system and is awarded when a student completes 60 hours of college credit along with specified performance requirements.

**Associate in Applied Science (AAS)** – A program of instruction with courses to prepare students for entry into employment. These courses are usually not transferrable to a baccalaureate program.

**Associate in Science (AS)** – A program of instruction with courses to prepare students for entry into employment or college transfer. These courses are more likely transferrable to a baccalaureate program than the AAS.

**College Credit** – The type of credit assigned to courses that are part of an organized and specified college degree or program.

**Credit Hour** – The number of contact hours for a course.

**Dual Enrollment** – Enrollment in two institutions at the same time, such as a college and high school, which allows students to earn both high school and college credit simultaneously.

**Duplicated Headcount** – A headcount measure by which students may be counted in more than one category. This measure usually describes the number of seats taken across multiple courses.

**First Time in College (FTIC)** – A student attending college for the first time with no prior credit toward a degree or formal award.

**Full-time equivalency (FTE)** – A measure to describe various cohorts of students based on the number of student credit hours generated. FTE is computed by dividing the total number of credit or clock hours by 30.

**Full-time Student** – A student who is registered for 12 or more credit hours in the fall and spring semesters or four or more credit hours in the summer semester.

**General Education Development (GED) Test** – A measure designed to provide an opportunity for adults who have not graduated from high school to earn a State of Florida High School diploma by measuring the major academic skills and knowledge associated with a high school program of study.



**Part-time Student** – A student who is registered for less than 12 credit hours in the fall and spring terms or fewer than four credit hours in the summer term.

**Postsecondary Adult Vocational Program (PSAV)** – Job preparatory programs through which a student may receive a vocational certificate upon completion of instruction.

**Postsecondary Vocational (PSV)** – Vocational education for students who have left or completed high school and who are enrolled in an organized program of study for which credit is given toward an associate degree.

**Reporting Year** – The summer, fall, and spring terms of overlapping calendar years. For example, summer 2006, fall 2007, and spring 2007 comprise the 2006-2007 reporting year. This differs from the academic year which begins with fall and ends with summer.

**Returning Students** – Students enrolled for the current term who were also enrolled in a prior term at the College.

**Unduplicated Headcount** – A headcount measure by which students are counted in only one category.

**Vocational Certificate** – The award for satisfactory completion of a program of study designed to prepare students for entry into an occupation.

**Workforce Education Program** – Training and/or retraining for adults who are out of school and already in the workforce.