



**North
Florida**



COMMUNITY COLLEGE

TABLE OF CONTENTS

Forward	2
Academic Overview	
Total Headcount.....	3
Total FTE.....	3
Number of Degrees Awarded (2001-2006).....	4
Student Success (NFCC GPA's compared to state average).....	5
NFCC Grade Distribution (2001-2006).....	5
Enrollment (2005-2006)	
By Degree.....	6
By County.....	7
By Gender.....	8
By Ethnicity.....	9
By Day and Time.....	10
Distance Learning	
Number of Online Courses (2001-2006).....	11
Number of Online Students (2001-2006).....	11
Breakdown of Online Students.....	11
Dual Enrollment	
Number and Cost of Students (2001-2006).....	12
Financial Aid	
Number of Awards.....	14
Total Award Dollars.....	14
Awards by County.....	15
Library	
Circulation.....	17
Use of Facilities and Services.....	17
Foundation	
Scholarship Dollars Awarded (2001-2006).....	18
Foundation Assets (2001-2006).....	18
Personnel	
Full-Time Employees by Degree (2005-2006).....	19
Full-Time Employees by Classification & Gender.....	19
Finances	
General Fund Budget (2006-2007).....	20
General Fund Budget Expenditures (2005-2006).....	21

FORWARD

The 2006 NFCC Fact Book is a compilation of information about North Florida Community College. The Fact Book is intended to provide the College community and others with a summary of institutional data that includes student demographics, enrollment, employee demographics, library resources, foundation information, and college finance and capital outlay. Information included in the Fact Book was gathered from a variety of sources including state publications and agencies and the NFCC database. Every effort has been made to ensure the accuracy of information.

We hope you will review this document closely and use it on a continual basis. Please take the time to provide the Office of Institutional Research with any feedback you may have concerning the Fact Book. This will give us the opportunity to consider suggestions for next year's effort. The degree to which people find the Fact Book informative and useful will be its principal measure of success.

Our sincere thanks are extended to the many people throughout the College who have offered their time, assistance, and patience toward this effort.

Dr. Jessica B. Webb

Executive Director

Office of Institutional Research

850-973-1683

Mrs. Carolyn Thigpen

Coordinator

Office of Institutional Research

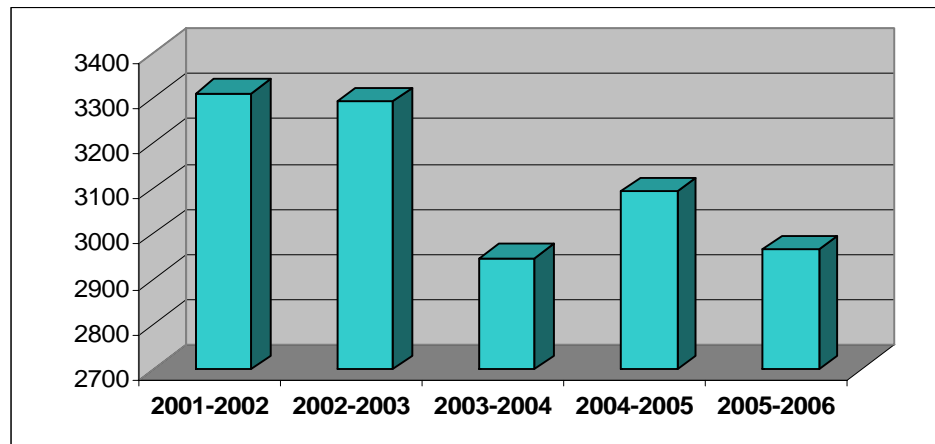
850-973-9434

<http://www.nfcc.edu/institiresearch/home.html>

ACADEMIC OVERVIEW

Total Headcount (2001 – 2006 Academic Years)

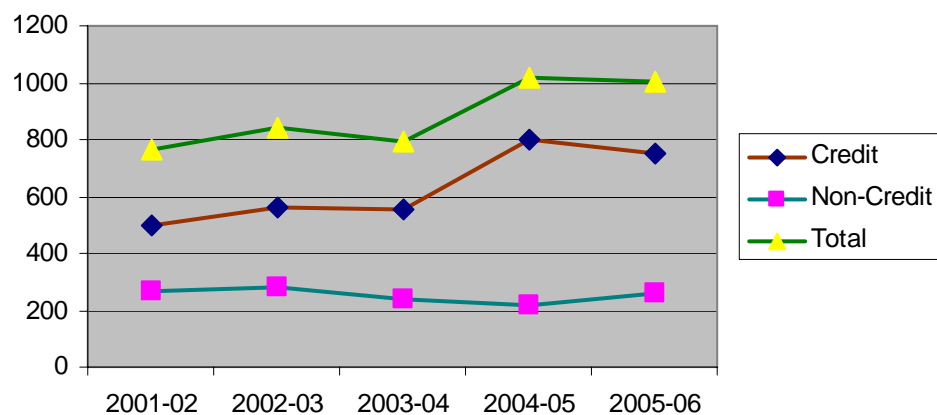
2001-2002	2002-2003	2003-2004	2004-2005	2005-2006
3310	3291	2947	3093	2966



Average class size is 20 students!

Total FTE (full-time equivalent) (2001 – 2006 Academic Years)

	2001-02	2002-03	2003-04	2004-05	2005-06
Credit	497	558	554	799	748
Non-Credit	267	282	241	220	257
Total	764	840	795	1019	1005

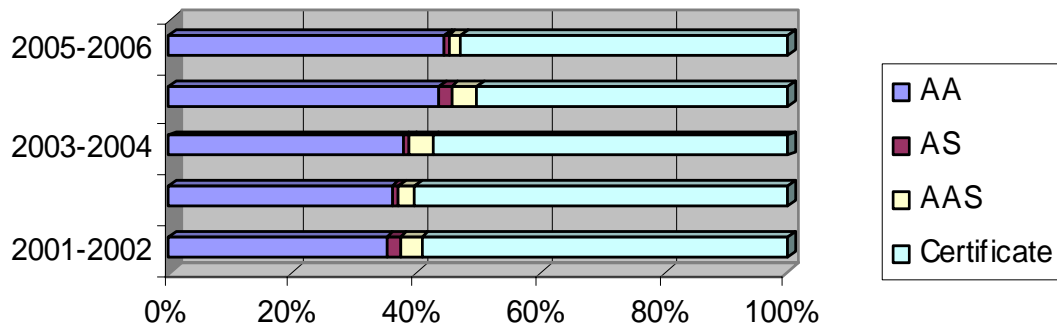


FTE is computed by dividing the total number of credit / clock hours by 30.

ACADEMIC OVERVIEW

Number of Degrees Awarded (2001 – 2006 Academic Years)

	2001-2002	2002-2003	2003-2004	2004-2005	2005-2006
AA	116	121	135	157	118
AS	7	4	4	7	2
AAS	12	9	13	15	5
Certificate	195	203	205	181	140
Total:	330	337	357	360	265



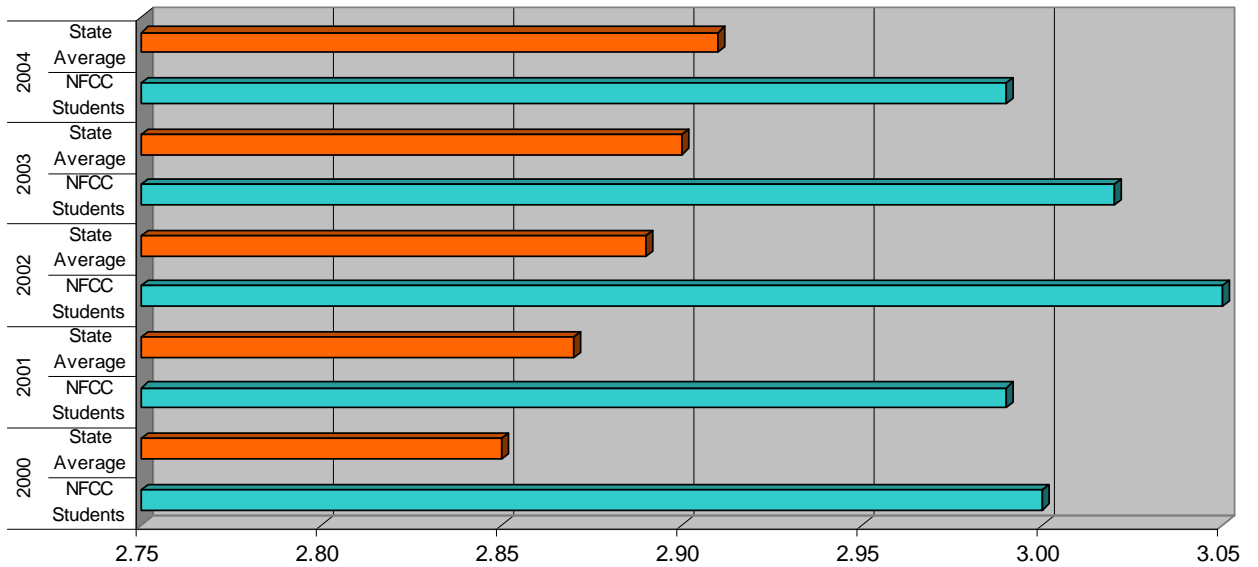
With small classes - usually less than 25 students - and caring instructors, NFCC offers an ideal learning environment. Students can participate in a variety of organizations, sports, music, theater, the student newspaper and many student-oriented campus events.

ACADEMIC OVERVIEW

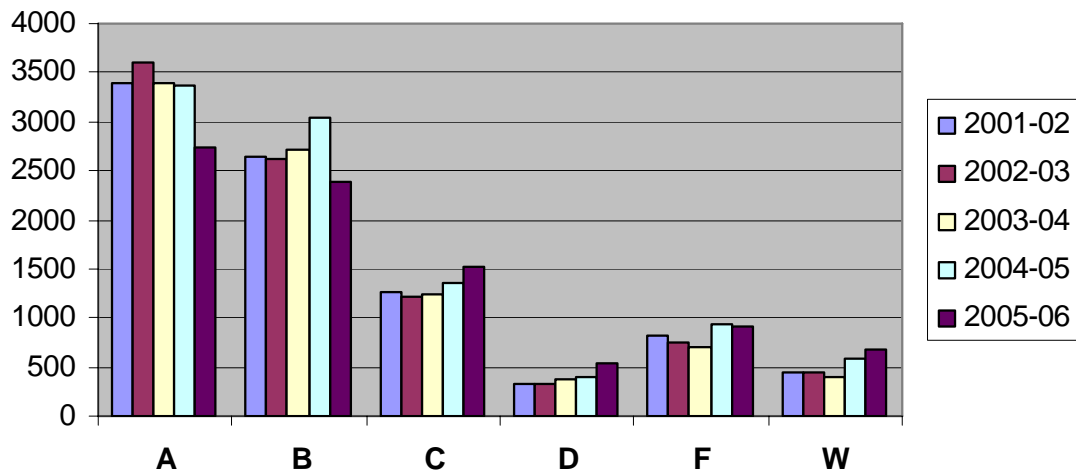
Student Success ...

Mean Cumulative Grade-Point Averages for NFCC Graduates Transferring to Florida Public Universities:

2000		2001		2002		2003		2004	
NFCC Students	State Average	NFCC Students	State Average	NFCC Students	State Average	NFCC Students	State Average	NFCC Students	State Average
3.00	2.85	2.99	2.87	3.05	2.89	3.02	2.90	2.99	2.91



Grade distribution in NFCC courses (2001-2006):

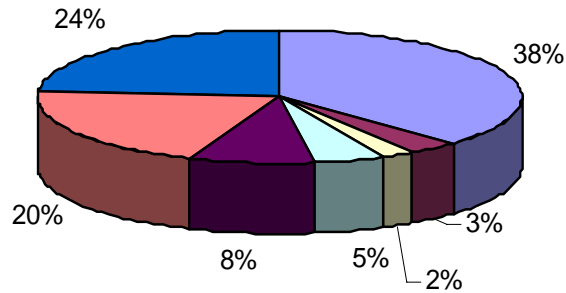


2005 – 2006 ENROLLMENT

By Degree ...

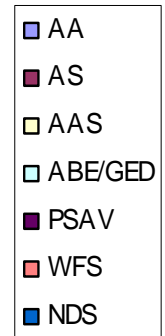
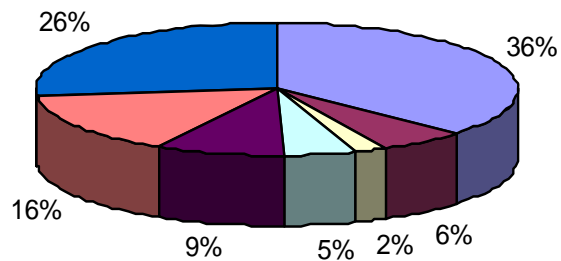
Fall 2005

Degree:		
AA	730	38%
AS	67	20%
AAS	45	2%
ABE/GED	91	5%
PSAV	165	8%
WFS	393	20%
NDS	466	24%
Total:	1957	



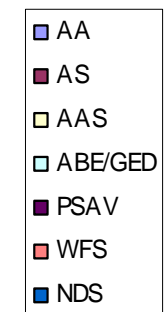
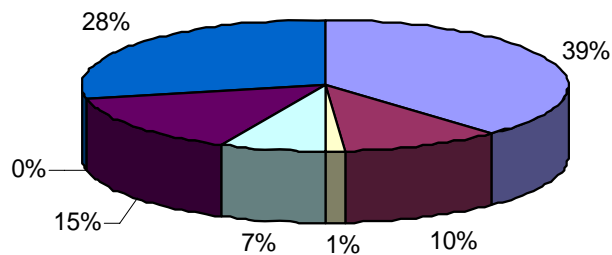
Spring 2006

Degree:		
AA	626	36%
AS	100	6%
AAS	39	2%
ABE/GED	79	5%
PSAV	147	9%
WFS	268	16%
NDS	450	26%
Total:	1709	



Summer 2006

Degree:		
AA	287	39%
AS	79	10%
AAS	10	1%
ABE/GED	53	7%
PSAV	111	15%
WFS	0	0%
NDS	213	28%
Total:	753	



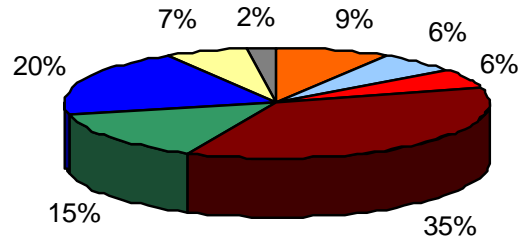
AA = Associate in Arts
 AS = Associate in Science
 AAS = Associate in Applied Science
 ABE/GED = Adult Basic Education / General Education Diploma
 PSAV = Post-Secondary Adult Vocational Certificate
 WFS = Workforce / Supplemental
 NDS = Non Degree Seeking (includes dual-enrolled)

2005 – 2006 ENROLLMENT

By County ...

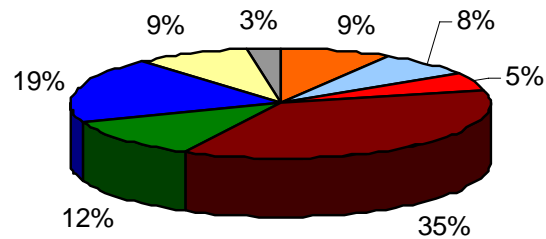
Fall 2005

Hamilton:	169	9%
Jefferson:	120	6%
Lafayette:	115	6%
Madison:	709	35%
Suwannee:	286	15%
Taylor:	385	20%
Other FL:	128	7%
Out of state:	43	2%



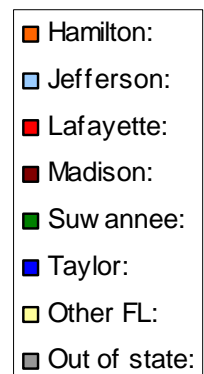
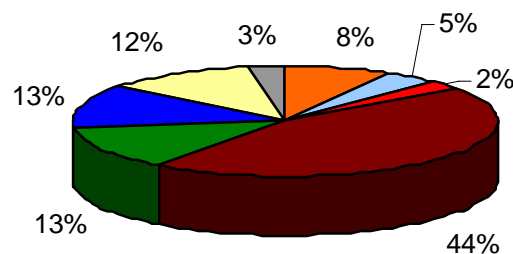
Spring 2006

Hamilton:	148	9%
Jefferson:	128	8%
Lafayette:	84	5%
Madison:	619	35%
Suwannee:	207	12%
Taylor:	328	19%
Other FL:	149	9%
Out of state:	43	3%



Summer 2006

Hamilton:	59	8%
Jefferson:	34	5%
Lafayette:	17	2%
Madison:	334	45%
Suwannee:	95	13%
Taylor:	93	13%
Other FL:	87	12%
Out of state:	20	3%

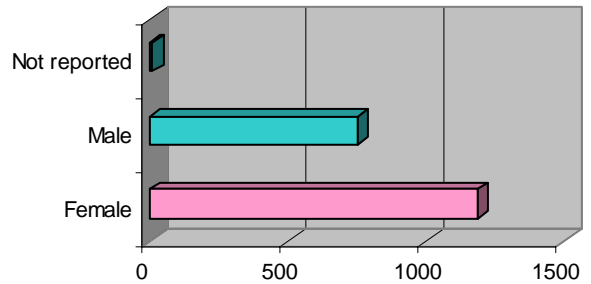


2005 – 2006 ENROLLMENT

By Gender ...

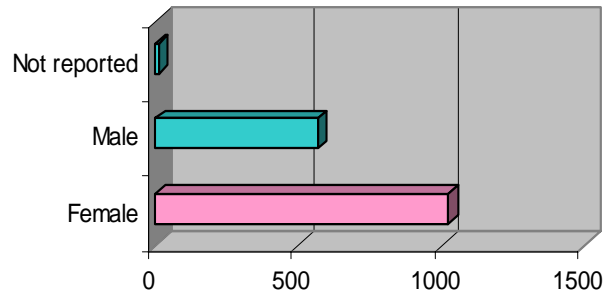
Fall 2005

Female	1191	61%
Male	754	39%
Not reported	12	>1%



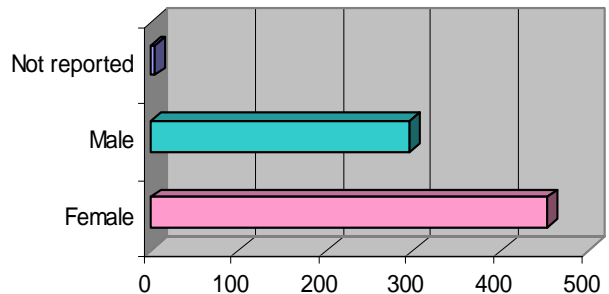
Spring 2006

Female	1025	64%
Male	565	35%
Not reported	10	>1%



Summer 2006

Female	452	60%
Male	295	39%
Not reported	5	>1%



History of College Presidents:

Dr. Marshall W. Hamilton	1958-1970
Dr. Stephen T. McMahon	1970-1978
Dr. Gary P. Sims	1978-1984
Dr. Robert W. Ramsay	1984-1987
Dr. William H. McCoy	1987-1995
Dr. Beverly M. Grissom	1996-2001
Mr. Morris G. Steen, Jr.	2001-present

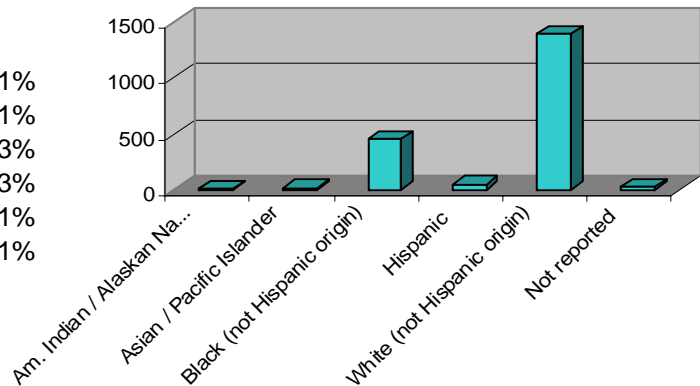
2005 – 2006 ENROLLMENT

By Ethnicity ...

Fall 2005

Am. Indian / Alaskan Native	8	>1%
Asian / Pacific Islander	18	>1%
Black (not Hispanic origin)	455	23%
Hispanic	51	3%
White (not Hispanic origin)	1397	71%
Not reported	28	1%

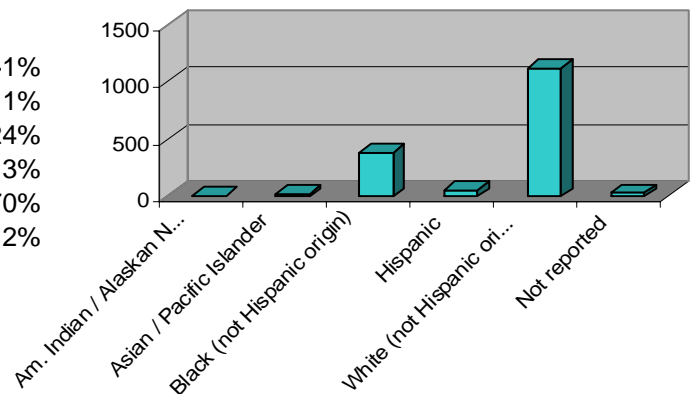
Minority enrollment count: 532
 % Minority enrollment: 27%



Spring 2006

Am. Indian / Alaskan Native	5	>1%
Asian / Pacific Islander	21	1%
Black (not Hispanic origin)	380	24%
Hispanic	51	3%
White (not Hispanic origin)	1119	70%
Not reported	24	2%

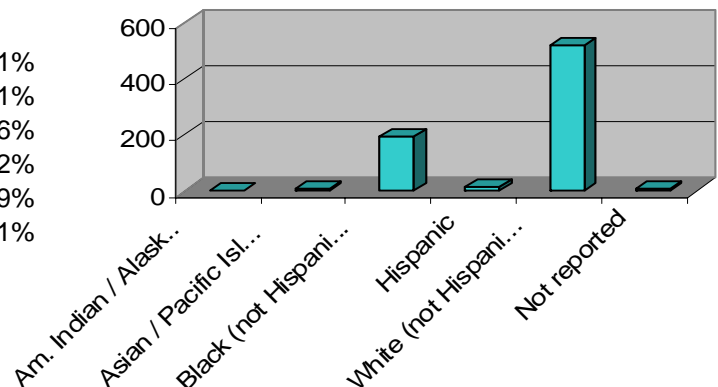
Minority enrollment count: 457
 % Minority enrollment: 29%



Summer 2006

Am. Indian / Alaskan Native	4	>1%
Asian / Pacific Islander	8	1%
Black (not Hispanic origin)	196	26%
Hispanic	15	2%
White (not Hispanic origin)	521	69%
Not reported	8	1%

Minority enrollment count: 223
 % Minority enrollment: 30%



2005 – 2006 ENROLLMENT

By Day and Time ...

Fall 2005

	Mon	Tue	Wed	Thu	Fri	Sat	Sun	Totals
8:00 – 8:50	379		388		370	57	17	1,211
8:00 – 9:15		510		515				1,025
9:00 - 9:50	483		463		384	9		1,339
9:30 – 10:45		324		356				680
10:00 - 10:50	240		210		195	22	22	689
11:00 – 12:15		369		367				736
11:00 – 11:50	350		350		280			980
12:30 - 1:45		247		237				484
12:00 – 12:50	211		211		181			603
1:00 – 1:50	278		284		136	17		715
2:00 - 3:15	81	33	35	47	8			204
3:30 - 4:45		33	16	16				65
After 5:00	413	537	302	476	138	25		1,891
Totals:	2,435	2,053	2,259	2,014	1,692	130	39	10,622

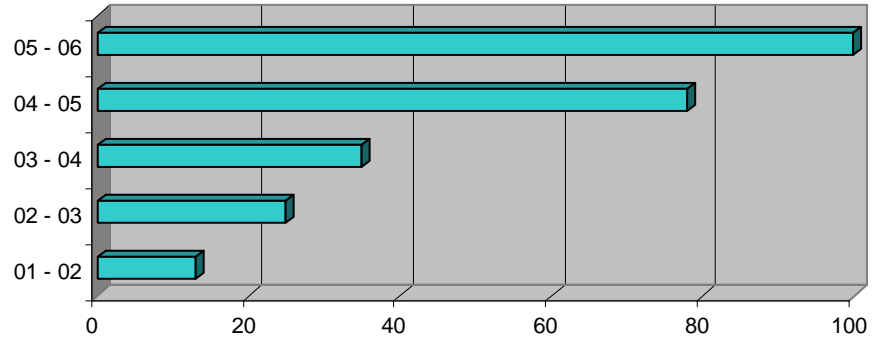
Spring 2006 This semester began the Mon/Wed or Tue/Thur 2-hour class format

	Mon	Tue	Wed	Thu	Fri	Sat	Sun	Totals
8:00 – 10:00	333	315	337	290	114	36	33	1,458
10:15 - 12:15	324	326	324	320	17	0	0	1,311
12:30 - 2:30	295	222	295	222	43	0	0	1,077
3:00 – 5:00	255	270	255	269	21	0	0	1,070
After 5:00	239	204	74	233	2	12	12	776
Totals:	1,571	1,418	1,392	1,442	197	48	45	6,113

DISTANCE LEARNING

Number of Online Courses (2002 – 2006) ...

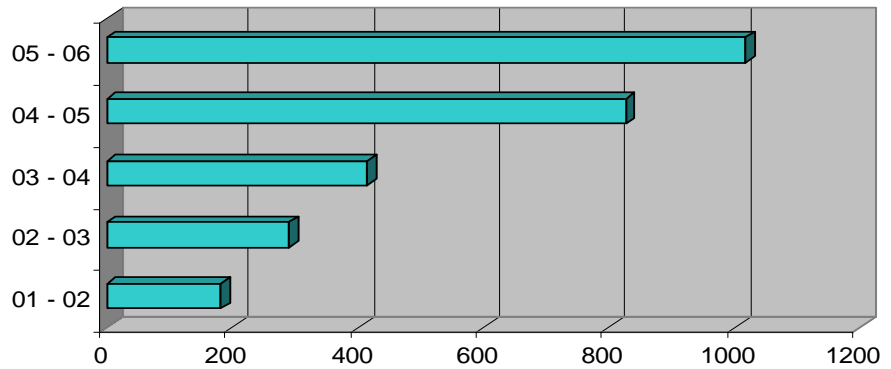
05 – 06:	100
04 – 05:	78
03 – 04:	35
02 – 03:	25
01 – 02:	13



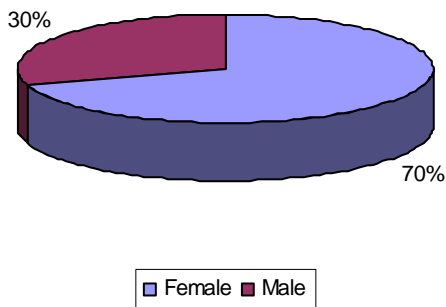
Student Demographics ...

Number of Online Students 2001 - 2006

05 – 06:	765
04 – 05:	608
03 – 04:	338
02 – 03:	244
01 – 02:	171

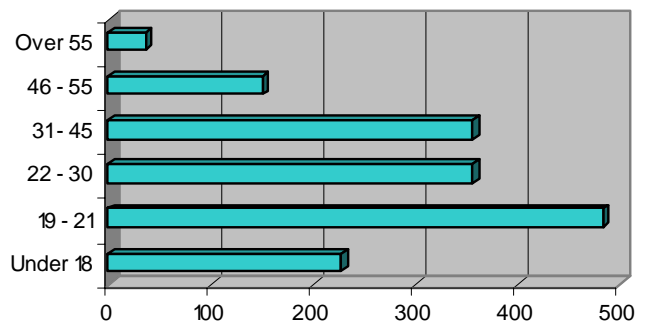


Male / Female Students
2005-2006



Students by Age	2005-2006
Under 18	228
19 - 21	483
22 - 30	355
31 - 45	356
46 - 55	150
Over 55	37

Average Age: 29

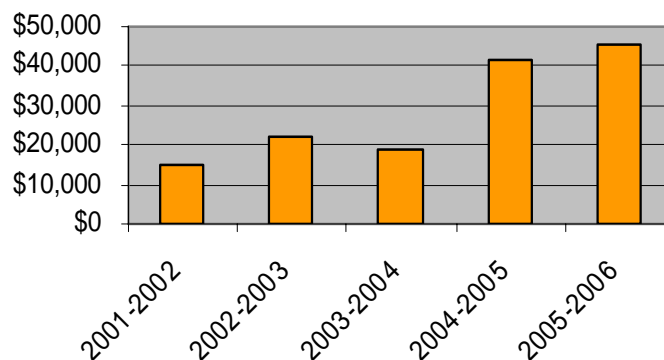


DUAL ENROLLMENT

Number and Cost of Dual Enrolled Students (2002 – 2006) ...

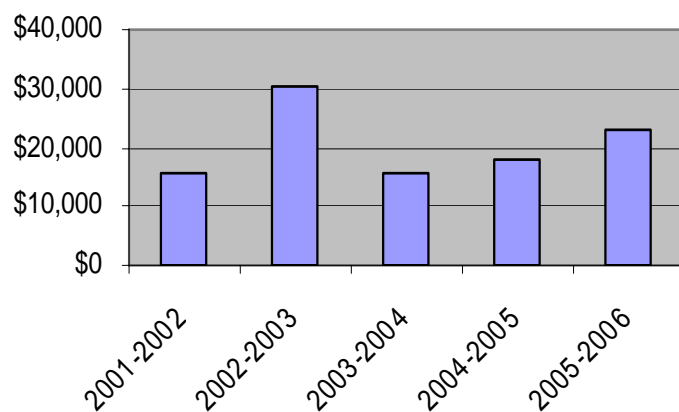
Hamilton:

	No. of students	Credit hrs.	Value
2001-2002	24	315	\$14,805
2002-2003	29	441	\$22,038
2003-2004	29	365	\$19,126
2004-2005	39	717	\$41,586
2005-2006	39	729	\$45,198



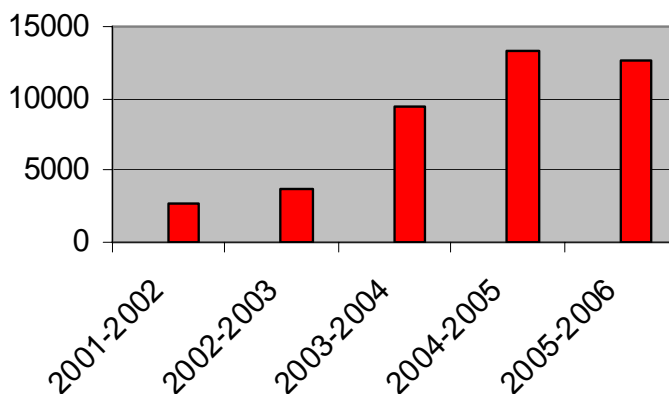
Jefferson:

	No. of students	Credit hrs.	Value
2001-2002	53	333	\$15,646
2002-2003	97	611	\$30,568
2003-2004	19	297	\$15,563
2004-2005	24	312	\$18,096
2005-2006	32	369	\$22,878



Lafayette:

	No. of students	Credit hrs.	Value
2001-2002	9	57	\$2,679
2002-2003	13	75	\$3,752
2003-2004	13	180	\$9,432
2004-2005	18	230	\$13,340
2005-2006	19	204	\$12,648

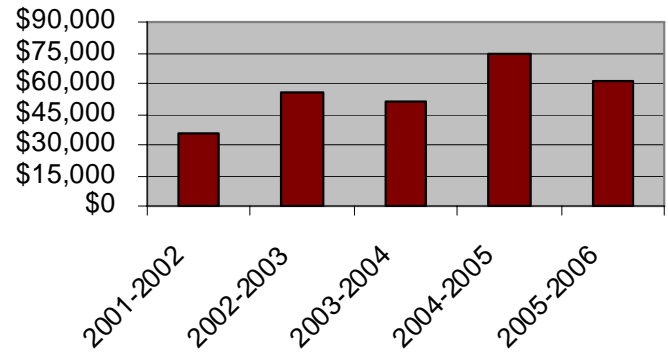


DUAL ENROLLMENT

Number and Cost of Dual Enrolled Students (2002 – 2006) ...

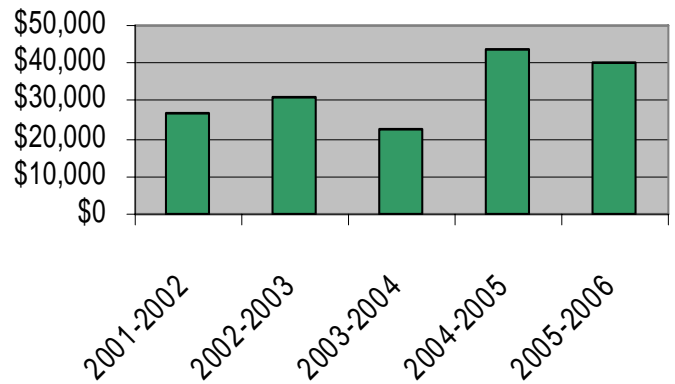
Madison:

	No. of students	Credit hrs.	Value
2001-2002	80	751	\$35,307
2002-2003	89	1,100	\$55,050
2003-2004	76	982	\$51,448
2004-2005	100	1,275	\$73,950
2005-2006	84	989	\$61,318



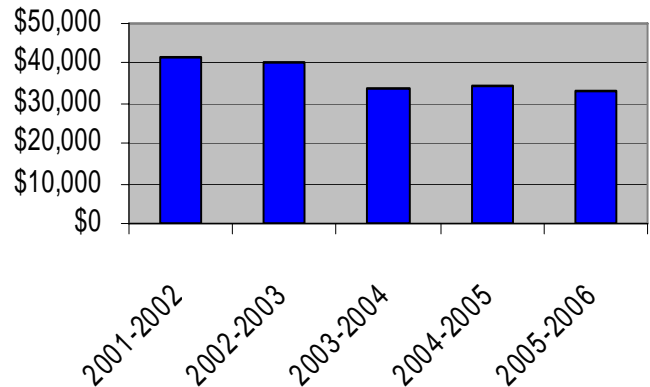
Suwannee:

	No. of students	Credit hrs.	Value
2001-2002	69	573	\$26,931
2002-2003	63	623	\$31,169
2003-2004	50	429	\$22,480
2004-2005	72	751	\$43,558
2005-2006	63	643	\$39,866



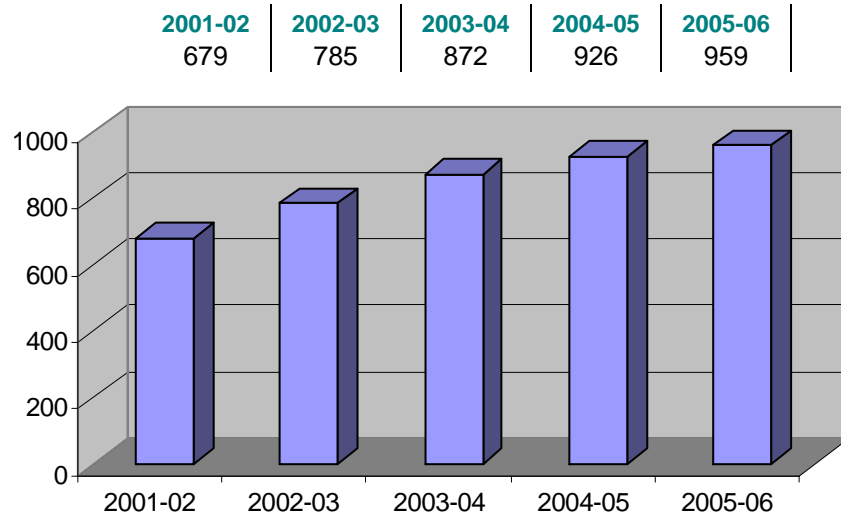
Taylor:

	No. of students	Credit hrs.	Value
2001-2002	60	885	\$41,579
2002-2003	54	803	\$40,174
2003-2004	46	642	\$33,641
2004-2005	48	593	\$34,390
2005-2006	52	529	\$32,794

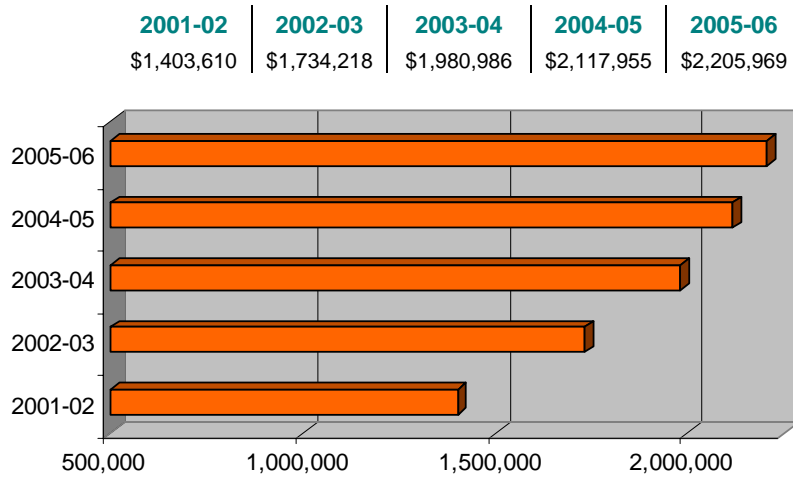


FINANCIAL AID

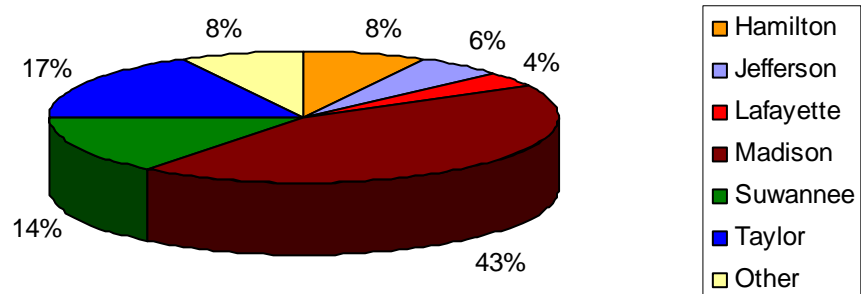
Number of Financial Aid Awards (2002 – 2006) ...



Dollar Amount of Financial Aid Awards (2002 – 2006) ...



Distribution by County (2005 – 2006) ...

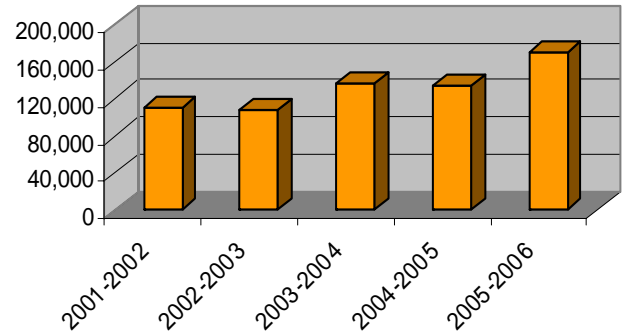


FINANCIAL AID

Awards by County (2002 – 2006) ...

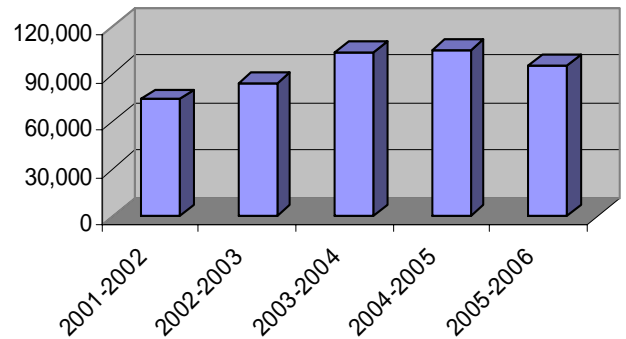
Hamilton

	# of Students	Amount Awarded
2001-2002	59	110,770
2002-2003	55	107,561
2003-2004	63	137,511
2004-2005	70	133,751
2005-2006	74	171,188
Total:	660,781	



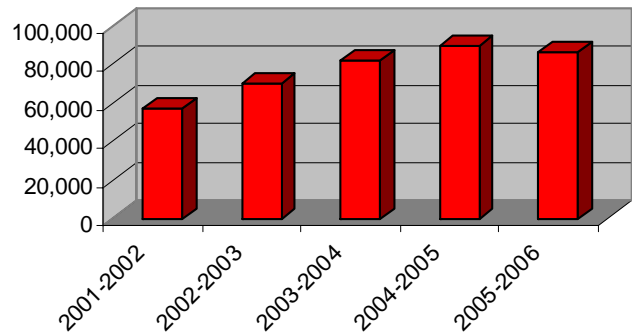
Jefferson

	# of Students	Amount Awarded
2001-2002	43	73,999
2002-2003	44	85,064
2003-2004	56	103,682
2004-2005	61	105,489
2005-2006	53	95,986
Total:	464,220	



Lafayette

	# of Students	Amount Awarded
2001-2002	27	57,265
2002-2003	31	69,690
2003-2004	36	81,916
2004-2005	34	89,694
2005-2006	37	85,787
Total:	384,352	

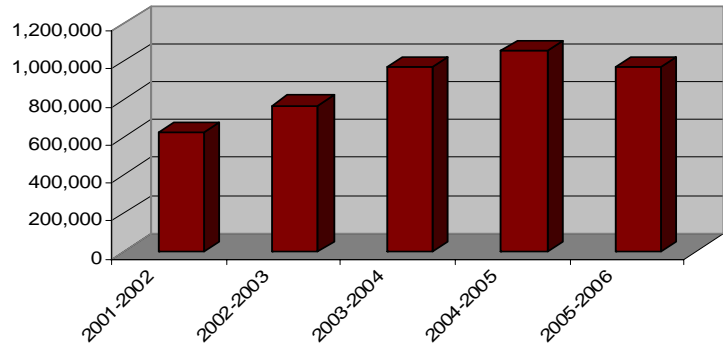


FINANCIAL AID

Awards by County (2002 – 2006) ...

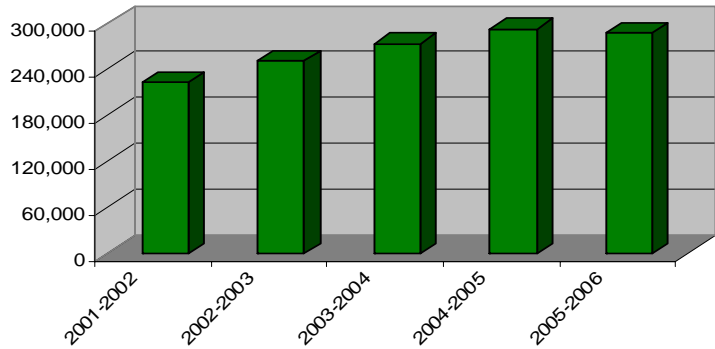
Madison

	# of Students	Amount Awarded
2001-2002	303	624,715
2002-2003	352	769,040
2003-2004	400	968,166
2004-2005	419	1,055,616
2005-2006	418	970,233
Total:	4,387,770	



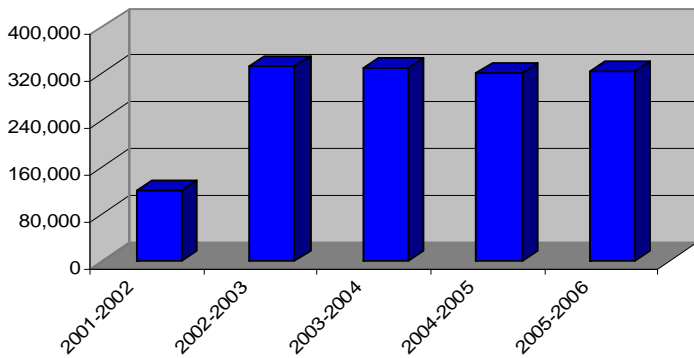
Suwannee

	# of Students	Amount Awarded
2001-2002	103	223,536
2002-2003	131	250,600
2003-2004	122	273,885
2004-2005	134	293,392
2005-2006	138	287,982
Total:	1,329,395	



Taylor

	# of Students	Amount Awarded
2001-2002	113	119,068
2002-2003	142	332,699
2003-2004	143	330,154
2004-2005	143	320,928
2005-2006	165	323,482
Total:	1,426,331	



NFCC LIBRARY

The Marshall Hamilton Library actively supports the curriculum and mission of North Florida Community College by providing access to quality learning resources and instructional services. The library promotes the use of electronic resources and seeks to provide its users with the competencies necessary to pursue their goals and to become productive members of the community. The Marshall Hamilton Library serves both on campus and remote access users. The Library enriches not only the college community but also NFCC's entire six-county district.

Use of Library Facilities and Services ...

2005-2006 circulation:

Books:	18,398
Periodicals:	7,334
Database Searches:	72,753
Online Catalog Searches:	27,675

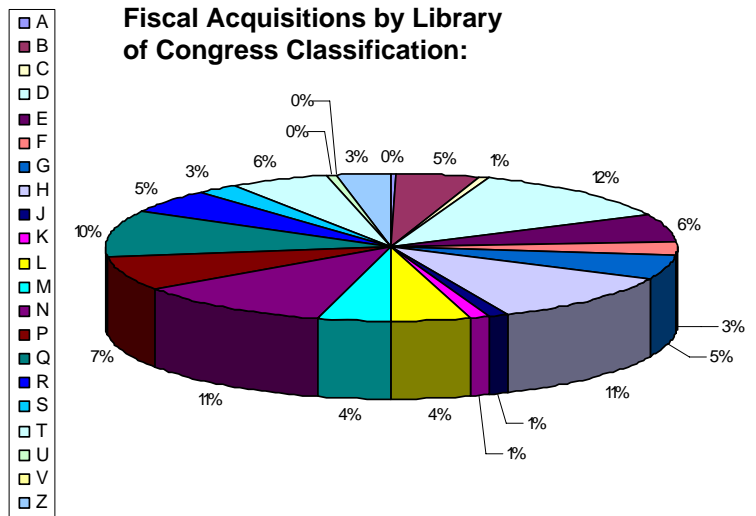
2005-2006 collections:

Books (Circulating):	35,475
Audio Visual *:	3,858
Periodicals:	222
Electronic Databases:	46
Totals:	39,601

* Audio Visual includes audiocassettes, DVDs, CDs, filmstrips, slides, video tapes)



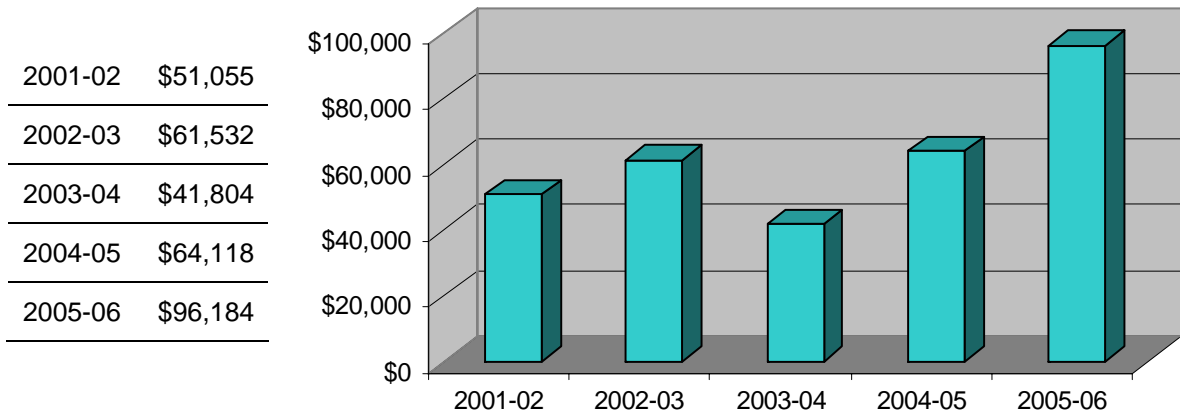
- A: General Works
- B: Philosophy, Psychology, Religion
- C: Auxiliary Sciences of History
- D: History (General) And History of Europe
- E: History: America
- F: History: America
- G: Geography, Anthropology, Recreation
- H: Social Sciences
- J: Political Science
- K: Law
- L: Education
- M: Music and Books on Music
- N: Fine Arts
- P: Language and Literature
- Q: Science
- R: Medicine
- S: Agriculture
- T: Technology
- U: Military Science
- V: Naval Science
- Z: Bibliography, Library Science, Information Resources



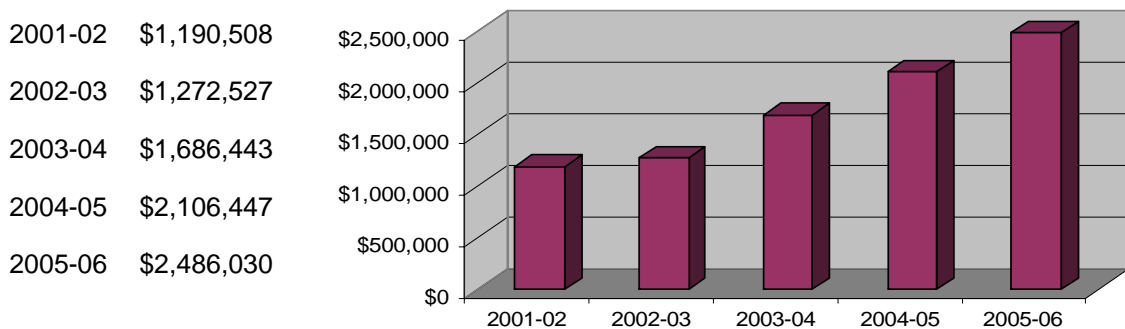
NFCC FOUNDATION

The North Florida Community College Foundation, Inc. is a not-for-profit corporation. It is located on the campus in Madison, Florida and is fiscally separate from North Florida Community College. The purpose of the Foundation is to provide direct financial support for the students and programs of North Florida Community College. The Foundation seeks outright and deferred gifts, gifts-in-kind, and services of individuals in order to accomplish its mission.

Scholarships Awarded (2001-2006) ...



Foundation Assets (2001-2006) ...

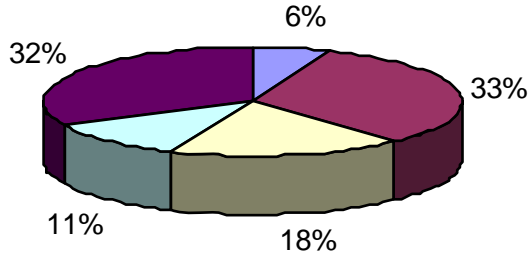


NFCC serves six counties including Hamilton, Jefferson, Lafayette, Madison, Suwannee and Taylor and continually strives to meet the needs of the area. Accordingly, NFCC provides students with opportunities for continuing academic and life enrichment goals, for advancing skills, and for developing judgment and values necessary for responsible citizenship in a changing society.

PERSONNEL

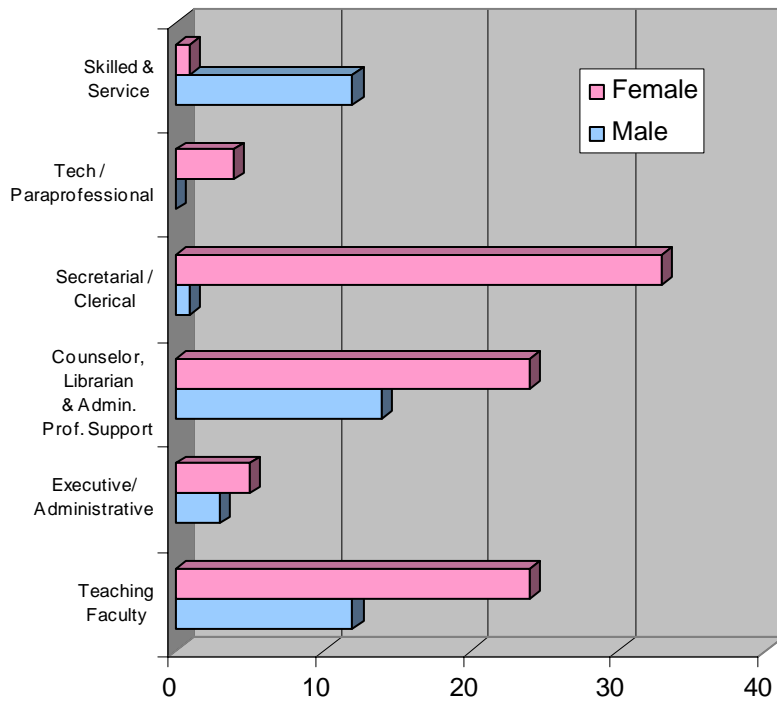
2005-2006 Full-Time Employees by Degree ...

Doctorate:	8	6%
Masters:	43	33%
Bachelors:	24	18%
Associate:	15	11%
Other:	43	32%
Total:	133	100%

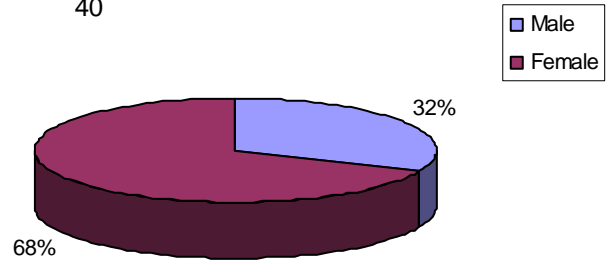
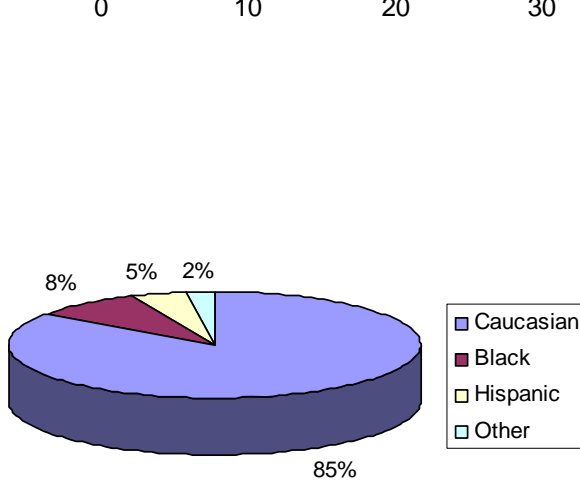


■	Doctorate
■	Masters
■	Bachelors
■	Associate
■	Other

Full-Time by Classification and Gender ...



	Male	Female
Teaching Faculty	12	24
Executive / Administrative	3	5
Counselor, Librarian & Admin. Professional Supp.	14	24
Secretarial / Clerical	1	33
Tech / Paraprofessional	0	4
Skilled & Service	12	1
Totals:	42	91

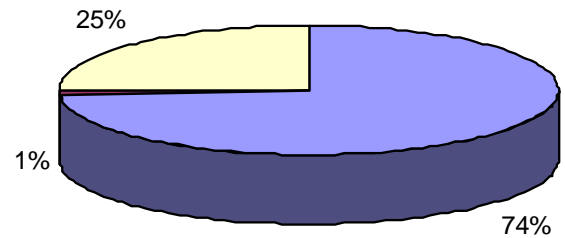


FINANCES

General Fund Budget 2006-2007

By Object:

Personnel Costs:	\$6,354,483	74%
Capital Outlay:	\$108,390	1%
Current Expenses:	\$2,157,990	25%

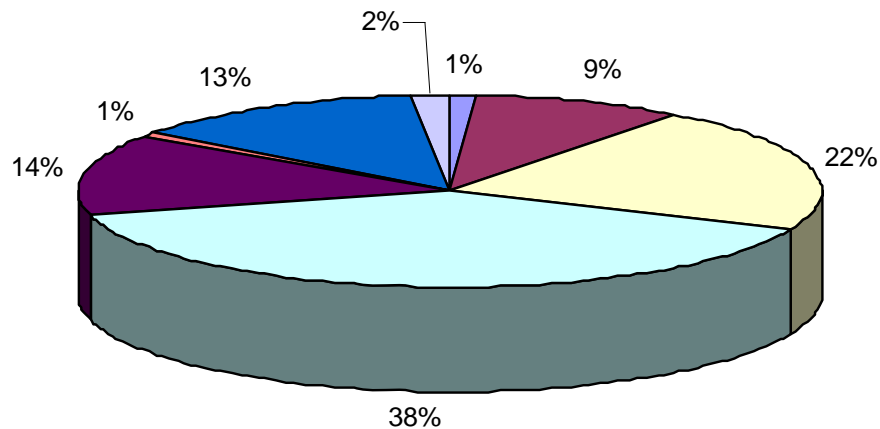


■ Personnel Costs ■ Capital Outlay ■ Current Expenses

By Organizational Unit:

Academic Support - SPD	\$96,075	2%
Academic Support - Other	\$790,438	9%
Institutional Support	\$1,854,520	22%
Instruction	\$3,365,759	38%
Plant Operations	\$1,193,809	14%
Public Service	\$55,991	1%
Student Support	\$1,116,271	13%
Transfer Contingencies	\$148,000	1%

Total: \$8,620,863



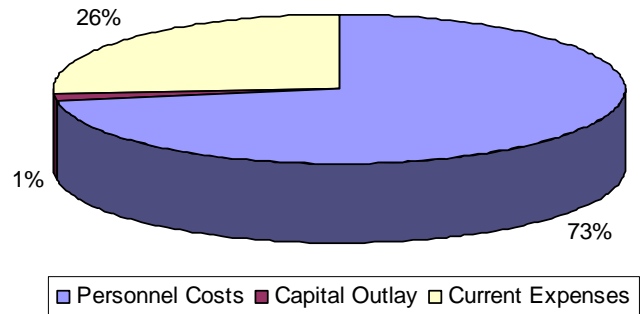
■ Acad Supp (SPD) ■ Acad Supp (Other) ■ Institutional Supp ■ Instruction
 ■ Plant Operations ■ Public Service ■ Student Support ■ Transfer Cont

FINANCES

General Fund Budget Expenditures 2005-2006

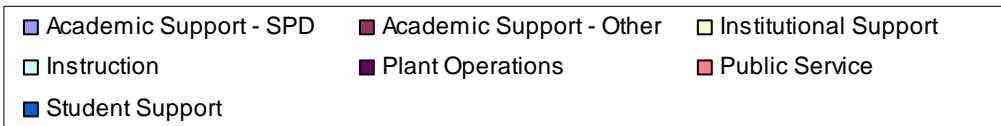
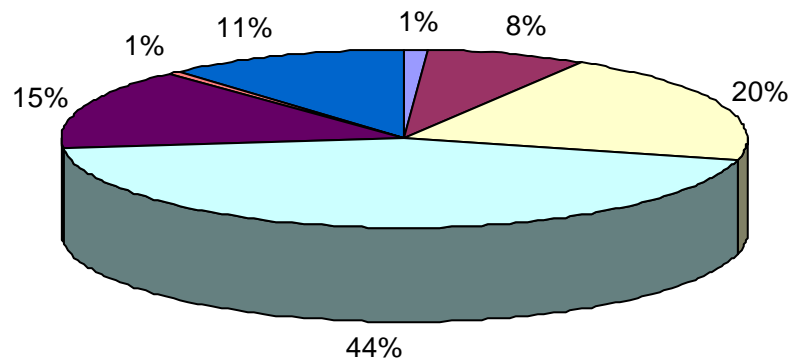
Object Categories:

Personnel Costs:	\$5,850,999	73%
Capital Outlay:	\$111,496	1%
Current Expenses:	\$2,118,405	26%



Organizational Categories:

Academic Support – SPD:	\$89,759	1%
Academic Support – Other:	\$609,307	8%
Institutional Support:	\$1,635,364	20%
Instruction:	\$3,594,213	44%
Plant Operations:	\$1,186,942	15%
Public Service:	\$54,082	1%
Student Support:	\$911,223	11%
Total:	\$8,080,890	



FACTBOOK 2005-2006

Compiled by the NFCC Office of Institutional Research



325 NW Turner Davis Drive
Madison, FL 32340

www.nfcc.edu

850-973-2288

Morris G. Steen, Jr.
President

NFCC is accredited by the Commission on Colleges of the Southern Association of Colleges and Schools (1866 Southern Lane, Decatur, Georgia; 404-679-4501) to award the associate degree. Web site address: WWW.SACS.ORG